

**KQN-M6/-35****Weidmüller Interface GmbH & Co. KG**

Klingenbergstraße 26

D-32758 Detmold

Germany

www.weidmueller.com



**The use of insulated connectors guarantees users consistent electrical connection quality in the long term.**

- Wide range of insulated and non-insulated cable lugs and connectors
- Tubular cable lugs according to current market standards (Euroseries)
- Compression cable lugs acc. to DIN 46235
- Sheet metal cable lugs acc. to DIN 46234
- Insulated ring cable lugs to DIN 46237
- Insulated pin cable lugs to DIN 46231

**General ordering data**

|            |   |
|------------|---|
| Version    | cable lug, terminal end, 35 mm <sup>2</sup> |
| Order No.  | <a href="#">1494170000</a>                  |
| Type       | KQN-M6/-35                                  |
| GTIN (EAN) | 4050118304015                               |
| Qty.       | 50 pc(s).                                   |

**KQN-M6/-35****Weidmüller Interface GmbH & Co. KG**

Klingenbergstraße 26

D-32758 Detmold

Germany

[www.weidmueller.com](http://www.weidmueller.com)**Technical data****Dimensions and weights**

|            |       |
|------------|-------|
| Net weight | 9.7 g |
|------------|-------|

**Connectors**

|                                |                    |                                |               |
|--------------------------------|--------------------|--------------------------------|---------------|
| Conductor cross-section        | 35 mm <sup>2</sup> | Connection length (l)          | 26 mm         |
| Hole                           | M 6                | Inside diameter of flange (d2) | 6.5 mm        |
| Inside diameter of shaft (d1)  | 9 mm               | Insulation                     | not available |
| Outside diameter of shaft (d3) | 15 mm              | Shaft length (a)               | 12 mm         |

**Classifications**

|             |             |             |             |
|-------------|-------------|-------------|-------------|
| ETIM 6.0    | EC001059    | ETIM 7.0    | EC001059    |
| ETIM 8.0    | EC001059    | ETIM 9.0    | EC001059    |
| ECLASS 9.0  | 27-40-02-12 | ECLASS 9.1  | 27-40-02-12 |
| ECLASS 10.0 | 27-40-02-12 | ECLASS 11.0 | 27-40-02-12 |
| ECLASS 12.0 | 27-40-02-12 | ECLASS 13.0 | 27-40-02-12 |

**Approvals**

|      |         |
|------|---------|
| ROHS | Conform |
|------|---------|

**Downloads**

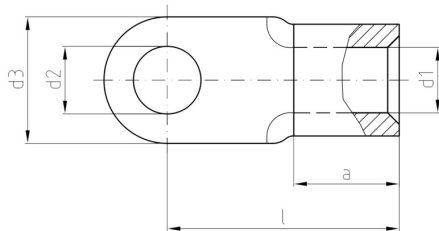
|            |  |
|------------|--|
| Catalogues | <a href="#">Catalogues in PDF-format</a> |
| Brochures  |  |

## KQN-M6/-35

**Weidmüller Interface GmbH & Co. KG**  
Klingenbergstraße 26  
D-32758 Detmold  
Germany

[www.weidmueller.com](http://www.weidmueller.com)

## Drawings



## KQN-M6/-35

Weidmüller Interface GmbH &amp; Co. KG

Klingenbergstraße 26

D-32758 Detmold

Germany

www.weidmueller.com

## Accessories

## ... for tubular cable lugs (acc. to EN 13600)

**Crimping tools for cable lugs, connectors and wire-end ferrules with interchangeable inserts**

- extremely fast processing thanks to hydraulic support
- large processing range up to 400 mm<sup>2</sup>
- 360° revolving quick action crimping head
- automatic pressure limitation and monitoring via pressure sensor
- Additional features for APG series:
- electronic control and monitoring of the crimping process
- Saving of all crimping cycles and error messages to internal memory
- Reading of all cycles and error messages via USB

**General ordering data**

|            |                            |                              |
|------------|----------------------------|------------------------------|
| Type       | ES APG 80 WM 35            | Version                      |
| Order No.  | <a href="#">1502490000</a> | 35mm <sup>2</sup> , WM crimp |
| GTIN (EAN) | 4050118310597              |                              |
| Qty.       | 1 pc(s).                   |                              |

## ... for compression cable lugs (acc. to DIN 46235)

**Crimping tools for cable lugs, connectors and wire-end ferrules with interchangeable inserts**

- extremely fast processing thanks to hydraulic support
- large processing range up to 400 mm<sup>2</sup>
- 360° revolving quick action crimping head
- automatic pressure limitation and monitoring via pressure sensor
- Additional features for APG series:
- electronic control and monitoring of the crimping process
- Saving of all crimping cycles and error messages to internal memory
- Reading of all cycles and error messages via USB

**General ordering data**

|            |                            |                 |
|------------|----------------------------|-----------------|
| Type       | ES APG 80 HEX 35           | Version         |
| Order No.  | <a href="#">1502650000</a> | Hexagonal crimp |
| GTIN (EAN) | 4050118310696              |                 |
| Qty.       | 1 pc(s).                   |                 |

## KQN-M6/-35

Weidmüller Interface GmbH &amp; Co. KG

Klingenbergstraße 26

D-32758 Detmold

Germany

www.weidmueller.com

## Accessories

## ... for compression cable lugs (acc. to DIN 46235)

**Crimping tools for cable lugs, connectors and wire-end ferrules with interchangeable inserts**

- extremely fast processing thanks to hydraulic support
- large processing range up to 300 mm<sup>2</sup>
- 270° revolving quick-action crimping head
- automatic pressure limitation and monitoring via pressure sensor
- electronic control and monitoring of the crimping process
- Saving of all crimping cycles and error messages to internal memory
- Reading of all cycles and error messages via USB
- Li-ion rechargeable battery with charge status indicator: 18 V, 2 Ah

**General ordering data**

|            |                            |                 |
|------------|----------------------------|-----------------|
| Type       | ES EPG 45 HEX 16/35        | Version         |
| Order No.  | <a href="#">1500950000</a> | Hexagonal crimp |
| GTIN (EAN) | 4050118309492              |                 |
| Qty.       | 1 pc(s).                   |                 |

**Tools****Crimping tools for cable lugs, connectors and wire-end ferrules with interchangeable inserts**

- extremely fast processing thanks to hydraulic support
- large processing range up to 300 mm<sup>2</sup>
- 270° revolving quick-action crimping head
- automatic pressure limitation and monitoring via pressure sensor
- electronic control and monitoring of the crimping process
- Saving of all crimping cycles and error messages to internal memory
- Reading of all cycles and error messages via USB
- Li-ion rechargeable battery with charge status indicator: 18 V, 2 Ah

**General ordering data**

|            |                            |  |
|------------|----------------------------|--|
| Type       | EPG 60                     | Version  |
| Order No.  | <a href="#">2453810000</a> | Pressing tools, Tools, Pressing tool, 6mm <sup>2</sup> , 300mm <sup>2</sup> , Hexagonal crimp, |
| GTIN (EAN) | 4050118468434              | WM crimp, Indent crimp, Trapezoidal crimp, Oval crimping                                       |
| Qty.       | 1 pc(s).                   |  |
| Type       | EPG 45                     | Version  |
| Order No.  | <a href="#">1500830000</a> | Pressing tool, 6mm <sup>2</sup> , 150mm <sup>2</sup> , Hexagonal crimp, WM crimp, Indent       |
| GTIN (EAN) | 4050118309317              | crimp, Trapezoidal crimp, Oval crimping  |
| Qty.       | 1 pc(s).                   |  |

## KQN-M6/-35

Weidmüller Interface GmbH &amp; Co. KG

Klingenbergstraße 26

D-32758 Detmold

Germany

www.weidmueller.com

## Accessories

## ... for compression cable lugs

**Crimping tools for cable lugs, connectors and wire-end ferrules with interchangeable inserts**

- extremely fast processing thanks to hydraulic support
- large processing range up to 300 mm<sup>2</sup>
- 270° revolving quick-action crimping head
- automatic pressure limitation and monitoring via pressure sensor
- electronic control and monitoring of the crimping process
- Saving of all crimping cycles and error messages to internal memory
- Reading of all cycles and error messages via USB
- Li-ion rechargeable battery with charge status indicator: 18 V, 2 Ah

**General ordering data**

|            |                            |                                       |
|------------|----------------------------|---------------------------------------|
| Type       | ES EPG/HPG 60 HEX 35       | Version                               |
| Order No.  | <a href="#">2505190000</a> | Crimping tool insert, Hexagonal crimp |
| GTIN (EAN) | 4050118519587              |                                       |
| Qty.       | 1 pc(s).                   |                                       |

**Tools****Crimping tools for cable lugs, connectors and wire-end ferrules with interchangeable inserts**

- extremely fast processing thanks to hydraulic support
- large processing range up to 400 mm<sup>2</sup>
- 360° revolving quick action crimping head
- automatic pressure limitation and monitoring via pressure sensor
- Additional features for APG series:
- electronic control and monitoring of the crimping process
- Saving of all crimping cycles and error messages to internal memory
- Reading of all cycles and error messages via USB

**General ordering data**

|            |                            |  |
|------------|----------------------------|--|
| Type       | APG 80                     | Version  |
| Order No.  | <a href="#">1502390000</a> | 6mm <sup>2</sup> , 400mm <sup>2</sup>  |
| GTIN (EAN) | 4050118310627              |  |
| Qty.       | 1 pc(s).                   |  |
| Type       | HPG 60                     | Version  |
| Order No.  | <a href="#">2453820000</a> | 6mm <sup>2</sup> , 300mm <sup>2</sup> , Hexagonal crimp, WM crimp, Indent crimp, |
| GTIN (EAN) | 4050118468427              | Trapezoidal crimp, Oval crimping   |
| Qty.       | 1 pc(s).                   |  |

## KQN-M6/-35

Weidmüller Interface GmbH &amp; Co. KG

Klingenbergstraße 26

D-32758 Detmold

Germany

www.weidmueller.com

## Accessories

## ... for tubular cable lugs (acc. to EN 13600)

**Crimping tools for cable lugs, connectors and wire-end ferrules with interchangeable inserts**

- extremely fast processing thanks to hydraulic support
- large processing range up to 300 mm<sup>2</sup>
- 270° revolving quick-action crimping head
- automatic pressure limitation and monitoring via pressure sensor
- electronic control and monitoring of the crimping process
- Saving of all crimping cycles and error messages to internal memory
- Reading of all cycles and error messages via USB
- Li-ion rechargeable battery with charge status indicator: 18 V, 2 Ah

**General ordering data**

|            |                            |          |
|------------|----------------------------|----------|
| Type       | ES EPG 45 WM 16/35         | Version  |
| Order No.  | <a href="#">1500920000</a> | WM crimp |
| GTIN (EAN) | 4050118309478              |          |
| Qty.       | 1 pc(s).                   |          |

## ... for tubular cable lugs

**Crimping tools for cable lugs, connectors and wire-end ferrules with interchangeable inserts**

- extremely fast processing thanks to hydraulic support
- large processing range up to 300 mm<sup>2</sup>
- 270° revolving quick-action crimping head
- automatic pressure limitation and monitoring via pressure sensor
- electronic control and monitoring of the crimping process
- Saving of all crimping cycles and error messages to internal memory
- Reading of all cycles and error messages via USB
- Li-ion rechargeable battery with charge status indicator: 18 V, 2 Ah

**General ordering data**

|            |                            |                                |
|------------|----------------------------|--------------------------------|
| Type       | ES EPG/HPG 60 WM 35        | Version                        |
| Order No.  | <a href="#">2469570000</a> | Crimping tool insert, WM crimp |
| GTIN (EAN) | 4050118483826              |                                |
| Qty.       | 1 pc(s).                   |                                |