

**KQN-M10/-240****Weidmüller Interface GmbH & Co. KG**

Klingenbergstraße 26

D-32758 Detmold

Germany

www.weidmueller.com



**The use of insulated connectors guarantees users consistent electrical connection quality in the long term.**

- Wide range of insulated and non-insulated cable lugs and connectors
- Tubular cable lugs according to current market standards (Euroseries)
- Compression cable lugs acc. to DIN 46235
- Sheet metal cable lugs acc. to DIN 46234
- Insulated ring cable lugs to DIN 46237
- Insulated pin cable lugs to DIN 46231

**General ordering data**

|            |                                              |
|------------|----------------------------------------------|
| Version    | cable lug, terminal end, 240 mm <sup>2</sup> |
| Order No.  | <a href="#">1493460000</a>                   |
| Type       | KQN-M10/-240                                 |
| GTIN (EAN) | 4050118303230                                |
| Qty.       | 25 pc(s).                                    |

**KQN-M10/-240****Weidmüller Interface GmbH & Co. KG**

Klingenbergstraße 26

D-32758 Detmold

Germany

[www.weidmueller.com](http://www.weidmueller.com)**Technical data****Dimensions and weights**

|            |         |
|------------|---------|
| Net weight | 150.1 g |
|------------|---------|

**Connectors**

|                                |                     |                                |               |
|--------------------------------|---------------------|--------------------------------|---------------|
| Conductor cross-section        | 240 mm <sup>2</sup> | Connection length (l)          | 56 mm         |
| Hole                           | M10                 | Inside diameter of flange (d2) | 10.5 mm       |
| Inside diameter of shaft (d1)  | 23.5 mm             | Insulation                     | not available |
| Outside diameter of shaft (d3) | 38 mm               | Shaft length (a)               | 32 mm         |

**Classifications**

|             |             |             |             |
|-------------|-------------|-------------|-------------|
| ETIM 6.0    | EC001059    | ETIM 7.0    | EC001059    |
| ETIM 8.0    | EC001059    | ETIM 9.0    | EC001059    |
| ECLASS 9.0  | 27-40-02-12 | ECLASS 9.1  | 27-40-02-12 |
| ECLASS 10.0 | 27-40-02-12 | ECLASS 11.0 | 27-40-02-12 |
| ECLASS 12.0 | 27-40-02-12 | ECLASS 13.0 | 27-40-02-12 |

**Environmental Product Compliance**

|            |   |
|------------|---|
| REACH SVHC | / |
|------------|---|

**Approvals**

|      |         |
|------|---------|
| ROHS | Conform |
|------|---------|

**Downloads**

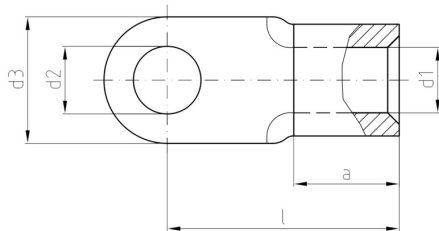
|            |                                          |
|------------|------------------------------------------|
| Catalogues | <a href="#">Catalogues in PDF-format</a> |
| Brochures  |                                          |

## KQN-M10/-240

**Weidmüller Interface GmbH & Co. KG**  
Klingenbergstraße 26  
D-32758 Detmold  
Germany

[www.weidmueller.com](http://www.weidmueller.com)

# Drawings



## KQN-M10/-240

Weidmüller Interface GmbH &amp; Co. KG

Klingenbergstraße 26

D-32758 Detmold

Germany

www.weidmueller.com

## Accessories

## ... for compression cable lugs (acc. to DIN 46235)

**Crimping tools for cable lugs, connectors and wire-end ferrules with interchangeable inserts**

- extremely fast processing thanks to hydraulic support
- large processing range up to 400 mm<sup>2</sup>
- 360° revolving quick action crimping head
- automatic pressure limitation and monitoring via pressure sensor
- Additional features for APG series:
- electronic control and monitoring of the crimping process
- Saving of all crimping cycles and error messages to internal memory
- Reading of all cycles and error messages via USB

**General ordering data**

|            |                            |                 |
|------------|----------------------------|-----------------|
| Type       | ES APG 80 HEX 240          | Version         |
| Order No.  | <a href="#">1502740000</a> | Hexagonal crimp |
| GTIN (EAN) | 4050118310481              |                 |
| Qty.       | 1 pc(s).                   |                 |

**Tools****Crimping tools for cable lugs, connectors and wire-end ferrules with interchangeable inserts**

- extremely fast processing thanks to hydraulic support
- large processing range up to 400 mm<sup>2</sup>
- 360° revolving quick action crimping head
- automatic pressure limitation and monitoring via pressure sensor
- Additional features for APG series:
- electronic control and monitoring of the crimping process
- Saving of all crimping cycles and error messages to internal memory
- Reading of all cycles and error messages via USB

**General ordering data**

|            |                            |                                       |
|------------|----------------------------|---------------------------------------|
| Type       | APG 80                     | Version                               |
| Order No.  | <a href="#">1502390000</a> | 6mm <sup>2</sup> , 400mm <sup>2</sup> |
| GTIN (EAN) | 4050118310627              |                                       |
| Qty.       | 1 pc(s).                   |                                       |

**KQN-M10/-240****Weidmüller Interface GmbH & Co. KG**

Klingenbergstraße 26

D-32758 Detmold

Germany

[www.weidmueller.com](http://www.weidmueller.com)**Accessories****... for tubular cable lugs (acc. to EN 13600)****Crimping tools for cable lugs, connectors and wire-end ferrules with interchangeable inserts**

- extremely fast processing thanks to hydraulic support
- large processing range up to 400 mm<sup>2</sup>
- 360° revolving quick action crimping head
- automatic pressure limitation and monitoring via pressure sensor
- Additional features for APG series:
- electronic control and monitoring of the crimping process
- Saving of all crimping cycles and error messages to internal memory
- Reading of all cycles and error messages via USB

**General ordering data**

|            |                            |                               |
|------------|----------------------------|-------------------------------|
| Type       | ES APG 80 WM 240           | Version                       |
| Order No.  | <a href="#">1502580000</a> | 240mm <sup>2</sup> , WM crimp |
| GTIN (EAN) | 4050118310689              |                               |
| Qty.       | 1 pc(s).                   |                               |