

VPLN/-35**Weidmüller Interface GmbH & Co. KG**

Klingenbergstraße 26

D-32758 Detmold

Germany

www.weidmueller.com**Similar to illustration**

The use of insulated connectors guarantees users consistent electrical connection quality in the long term.

- Wide range of insulated and non-insulated cable lugs and connectors
- Tubular cable lugs according to current market standards (Euroseries)
- Compression cable lugs acc. to DIN 46235
- Sheet metal cable lugs acc. to DIN 46234
- Insulated ring cable lugs to DIN 46237
- Insulated pin cable lugs to DIN 46231

General ordering data

| | |
|------------|--|
| Version | cable lug, terminal end, 35 mm ² , 35 mm ² |
| Order No. | 1492920000 |
| Type | VPLN/-35 |
| GTIN (EAN) | 4050118302752 |
| Qty. | 100 pc(s). |

VPLN/-35**Weidmüller Interface GmbH & Co. KG**

Klingenbergstraße 26

D-32758 Detmold

Germany

www.weidmueller.com**Technical data****Dimensions and weights**

| | |
|------------|-------|
| Net weight | 6.4 g |
|------------|-------|

Connectors

| | | | |
|-------------------------|--------------------|--------------------------------|--------------------|
| Conductor cross-section | 35 mm ² | Conductor cross-section, max. | 35 mm ² |
| Connection length (l) | 14 mm | Inside diameter of shaft (d1) | 9.2 mm |
| Insulation | not available | Outside diameter of shaft (d3) | 12.4 mm |

Classifications

| | | | |
|-------------|-------------|-------------|-------------|
| ETIM 6.0 | EC001059 | ETIM 7.0 | EC001059 |
| ETIM 8.0 | EC001059 | ETIM 9.0 | EC001059 |
| ECLASS 9.0 | 27-40-02-12 | ECLASS 9.1 | 27-40-02-12 |
| ECLASS 10.0 | 27-40-02-12 | ECLASS 11.0 | 27-40-02-12 |
| ECLASS 12.0 | 27-40-02-12 | ECLASS 13.0 | 27-40-02-12 |

Environmental Product Compliance

| | |
|------------|---|
| REACH SVHC | / |
|------------|---|

Approvals

| | |
|------|---------|
| ROHS | Conform |
|------|---------|

Downloads

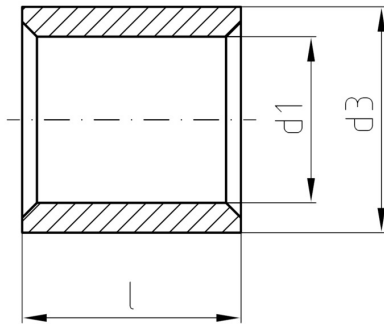
| | |
|------------|--|
| Catalogues | Catalogues in PDF-format |
| Brochures | |

VPLN/-35

Weidmüller Interface GmbH & Co. KG
Klingenbergstraße 26
D-32758 Detmold
Germany

www.weidmueller.com

Drawings



VPLN/-35

Weidmüller Interface GmbH & Co. KG

Klingenbergstraße 26

D-32758 Detmold

Germany

www.weidmueller.com

Accessories

... for tubular cable lugs (acc. to EN 13600)

**Crimping tools for cable lugs, connectors and wire-end ferrules with interchangeable inserts**

- extremely fast processing thanks to hydraulic support
- large processing range up to 400 mm²
- 360° revolving quick action crimping head
- automatic pressure limitation and monitoring via pressure sensor
- Additional features for APG series:
- electronic control and monitoring of the crimping process
- Saving of all crimping cycles and error messages to internal memory
- Reading of all cycles and error messages via USB

General ordering data

| | | |
|------------|----------------------------|------------------------------|
| Type | ES APG 80 WM 35 | Version |
| Order No. | 1502490000 | 35mm ² , WM crimp |
| GTIN (EAN) | 4050118310597 | |
| Qty. | 1 pc(s). | |

... for compression cable lugs (acc. to DIN 46235)

**Crimping tools for cable lugs, connectors and wire-end ferrules with interchangeable inserts**

- extremely fast processing thanks to hydraulic support
- large processing range up to 400 mm²
- 360° revolving quick action crimping head
- automatic pressure limitation and monitoring via pressure sensor
- Additional features for APG series:
- electronic control and monitoring of the crimping process
- Saving of all crimping cycles and error messages to internal memory
- Reading of all cycles and error messages via USB

General ordering data

| | | |
|------------|----------------------------|-----------------|
| Type | ES APG 80 HEX 35 | Version |
| Order No. | 1502650000 | Hexagonal crimp |
| GTIN (EAN) | 4050118310696 | |
| Qty. | 1 pc(s). | |

VPLN/-35

Weidmüller Interface GmbH & Co. KG

Klingenbergstraße 26

D-32758 Detmold

Germany

www.weidmueller.com

Accessories

Tools

**Crimping tools for cable lugs, connectors and wire-end ferrules with interchangeable inserts**

- extremely fast processing thanks to hydraulic support
- large processing range up to 300 mm²
- 270° revolving quick-action crimping head
- automatic pressure limitation and monitoring via pressure sensor
- electronic control and monitoring of the crimping process
- Saving of all crimping cycles and error messages to internal memory
- Reading of all cycles and error messages via USB
- Li-ion rechargeable battery with charge status indicator: 18 V, 2 Ah

General ordering data

| | | |
|------------|----------------------------|--|
| Type | EPG 45 | Version |
| Order No. | 1500830000 | Pressing tool, 6mm ² , 150mm ² , Hexagonal crimp, WM crimp, Indent |
| GTIN (EAN) | 4050118309317 | crimp, Trapezoidal crimp, Oval crimping |
| Qty. | 1 pc(s). | |
| Type | EPG 60 | Version |
| Order No. | 2453810000 | Pressing tools, Tools, Pressing tool, 6mm ² , 300mm ² , Hexagonal crimp, |
| GTIN (EAN) | 4050118468434 | WM crimp, Indent crimp, Trapezoidal crimp, Oval crimping |
| Qty. | 1 pc(s). | |

... for tubular cable lugs (acc. to EN 13600)**Crimping tools for cable lugs, connectors and wire-end ferrules with interchangeable inserts**

- extremely fast processing thanks to hydraulic support
- large processing range up to 300 mm²
- 270° revolving quick-action crimping head
- automatic pressure limitation and monitoring via pressure sensor
- electronic control and monitoring of the crimping process
- Saving of all crimping cycles and error messages to internal memory
- Reading of all cycles and error messages via USB
- Li-ion rechargeable battery with charge status indicator: 18 V, 2 Ah

General ordering data

| | | |
|------------|----------------------------|----------|
| Type | ES EPG 45 WM 16/35 | Version |
| Order No. | 1500920000 | WM crimp |
| GTIN (EAN) | 4050118309478 | |
| Qty. | 1 pc(s). | |

VPLN/-35

Weidmüller Interface GmbH & Co. KG

Klingenbergstraße 26

D-32758 Detmold

Germany

www.weidmueller.com

Accessories

... for tubular cable lugs

**Crimping tools for cable lugs, connectors and wire-end ferrules with interchangeable inserts**

- extremely fast processing thanks to hydraulic support
- large processing range up to 300 mm²
- 270° revolving quick-action crimping head
- automatic pressure limitation and monitoring via pressure sensor
- electronic control and monitoring of the crimping process
- Saving of all crimping cycles and error messages to internal memory
- Reading of all cycles and error messages via USB
- Li-ion rechargeable battery with charge status indicator: 18 V, 2 Ah

General ordering data

| | | |
|------------|----------------------------|--------------------------------|
| Type | ES EPG/HPG 60 WM 35 | Version |
| Order No. | 2469570000 | Crimping tool insert, WM crimp |
| GTIN (EAN) | 4050118483826 | |
| Qty. | 1 pc(s). | |

... for compression cable lugs

**Crimping tools for cable lugs, connectors and wire-end ferrules with interchangeable inserts**

- extremely fast processing thanks to hydraulic support
- large processing range up to 300 mm²
- 270° revolving quick-action crimping head
- automatic pressure limitation and monitoring via pressure sensor
- electronic control and monitoring of the crimping process
- Saving of all crimping cycles and error messages to internal memory
- Reading of all cycles and error messages via USB
- Li-ion rechargeable battery with charge status indicator: 18 V, 2 Ah

General ordering data

| | | |
|------------|----------------------------|---------------------------------------|
| Type | ES EPG/HPG 60 HEX 35 | Version |
| Order No. | 2505190000 | Crimping tool insert, Hexagonal crimp |
| GTIN (EAN) | 4050118519587 | |
| Qty. | 1 pc(s). | |

VPLN/-35

Weidmüller Interface GmbH & Co. KG

Klingenbergstraße 26

D-32758 Detmold

Germany

www.weidmueller.com

Accessories

... for compression cable lugs (acc. to DIN 46235)

**Crimping tools for cable lugs, connectors and wire-end ferrules with interchangeable inserts**

- extremely fast processing thanks to hydraulic support
- large processing range up to 300 mm²
- 270° revolving quick-action crimping head
- automatic pressure limitation and monitoring via pressure sensor
- electronic control and monitoring of the crimping process
- Saving of all crimping cycles and error messages to internal memory
- Reading of all cycles and error messages via USB
- Li-ion rechargeable battery with charge status indicator: 18 V, 2 Ah

General ordering data

| | | |
|------------|----------------------------|-----------------|
| Type | ES EPG 45 HEX 16/35 | Version |
| Order No. | 1500950000 | Hexagonal crimp |
| GTIN (EAN) | 4050118309492 | |
| Qty. | 1 pc(s). | |

Tools**Crimping tools for cable lugs, connectors and wire-end ferrules with interchangeable inserts**

- extremely fast processing thanks to hydraulic support
- large processing range up to 400 mm²
- 360° revolving quick action crimping head
- automatic pressure limitation and monitoring via pressure sensor
- Additional features for APG series:
- electronic control and monitoring of the crimping process
- Saving of all crimping cycles and error messages to internal memory
- Reading of all cycles and error messages via USB

General ordering data

| | | |
|------------|----------------------------|--|
| Type | HPG 60 | Version |
| Order No. | 2453820000 | 6mm ² , 300mm ² , Hexagonal crimp, WM crimp, Indent crimp, |
| GTIN (EAN) | 4050118468427 | Trapezoidal crimp, Oval crimping |
| Qty. | 1 pc(s). | |
| Type | APG 80 | Version |
| Order No. | 1502390000 | 6mm ² , 400mm ² |
| GTIN (EAN) | 4050118310627 | |
| Qty. | 1 pc(s). | |