

**FSKI/1,5-2,5/488****Weidmüller Interface GmbH & Co. KG**

Klingenbergstraße 26

D-32758 Detmold

Germany

www.weidmueller.com

**Insulated tab connector made from PVC with copper sleeve**

- Commercially available designs
- Not soldered
- With conical entry funnel

**General ordering data**

Version	cable lug, terminal end, Insulated cable connector, 2.5 mm <sup>2</sup> , 1.5 mm <sup>2</sup> - 2.5 mm <sup>2</sup>
Order No.	<a href="#">1491850000</a>
Type	FSKI/1,5-2,5/488
GTIN (EAN)	4050118301687
Qty.	100 pc(s).

**FSKI/1,5-2,5/488****Weidmüller Interface GmbH & Co. KG**

Klingenbergstraße 26

D-32758 Detmold

Germany

[www.weidmueller.com](http://www.weidmueller.com)**Technical data****Dimensions and weights**

Net weight	0.859 g
------------	---------

**Connectors**

Conductor cross-section	2.5 mm <sup>2</sup>	Conductor cross-section, max.	2.5 mm <sup>2</sup>
Conductor cross-section, min.	1.5 mm <sup>2</sup>	Identification colour	blue
Insulation	Available	Material/plastic	PVC

**Classifications**

ETIM 6.0	EC000516	ETIM 7.0	EC000516
ETIM 8.0	EC000516	ETIM 9.0	EC000516
ECLASS 9.0	27-44-03-92	ECLASS 9.1	27-40-02-90
ECLASS 10.0	27-44-03-92	ECLASS 11.0	27-44-03-92
ECLASS 12.0	27-44-03-92	ECLASS 13.0	27-44-03-92

**Environmental Product Compliance**

REACH SVHC	Lead 7439-92-1
SCIP	7b42d2b9-0a0f-4f66-a989-e9bfbbfeb1b3

**Approvals**

ROHS	Conform
------	---------

**Downloads**

Catalogues	<a href="#">Catalogues in PDF-format</a>
Brochures	

**FSKI/1,5-2,5/488**

**Weidmüller Interface GmbH & Co. KG**

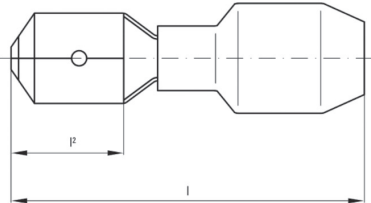
Klingenbergstraße 26

D-32758 Detmold

Germany

[www.weidmueller.com](http://www.weidmueller.com)

## Drawings



**FSKI/1,5-2,5/488****Weidmüller Interface GmbH & Co. KG**

Klingenbergstraße 26

D-32758 Detmold

Germany

[www.weidmueller.com](http://www.weidmueller.com)**Accessories****Crimping tools****Crimping tools for insulated connectors**

cable lugs, terminal pins, parallel and serial connectors, plug-in connectors

- Ratchet guarantees precise crimping
- Release option in the event of incorrect operation
- With stop for exact positioning of the contacts.
- Tested to DIN EN 60352 part 2

**General ordering data**

Type	CTI 6 G	Version
Order No.	<a href="#">9202850000</a>	Pressing tool, Tool for insulated cable connectors, 0.5mm <sup>2</sup> , 6mm <sup>2</sup> ,
GTIN (EAN)	4032248517855	Oval crimping, Parallel crimp
Qty.	1 pc(s).	
Type	CTI 6	Version
Order No.	<a href="#">9006120000</a>	Pressing tool, Crimping tool for contacts, 0.5mm <sup>2</sup> , 6mm <sup>2</sup> , Oval
GTIN (EAN)	4008190044527	crimping, Double crimp
Qty.	1 pc(s).	
Type	HTI 15	Version
Order No.	<a href="#">9014400000</a>	Pressing tool, Tool for insulated cable connectors, 0.5mm <sup>2</sup> , 2.5mm <sup>2</sup> ,
GTIN (EAN)	4008190159412	Double crimp
Qty.	1 pc(s).	