

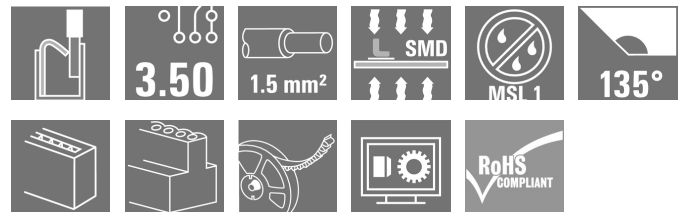
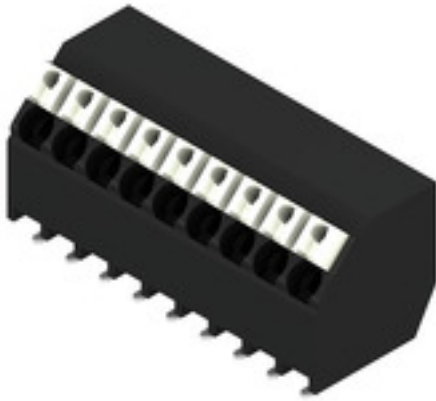
**LSF-SMD 3.50/09/135 SN BK RL****Weidmüller Interface GmbH & Co. KG**

Klingenbergstraße 26

D-32758 Detmold

Germany

www.weidmueller.com

**Product image****The innovative quick connector - simple, safe and economical:**

PCB terminals with spring connection and direct PUSH IN technology. A milestone in connection technology.

Amazingly simple and simply amazing in practice:

- Connect and easily detach solid wires or wires with wire-end ferrules without using tools
- Processed automatically in the reflow or vapour phase
- Potentials and clamping points marked clearly by coloured push buttons

World-class design-in and processing phases, and suitable for a vast range of applications.

**PCB terminal for fully automatic assembly using reflow soldering (SMD), with PUSH IN wire connections. Conductor insertion and slider operation from the same direction (TOP).**

- **Solid & flexible conductors with wire-end ferrules need only to be inserted and they are ready.**
- **When connecting stranded wires without wire-end ferrules the actuating element is used to open the terminal point**
- **Intuitive handling – since the wire-entry area and handling area are clearly separated.**
- **Packaged in tape-on-reel**
- **Conductor outlet direction 135°**

**General ordering data**

|              |   |
|--------------|---|
| Version      | Printed circuit board terminals, 3.50 mm, Number of poles: 9, 135°, black, PUSH IN with actuator, Clamping range, max.: 1.5 mm², Tape |
| Order No.    | <a href="#">1473390000</a>  |
| Type         | LSF-SMD 3.50/09/135 SN BK RL  |
| GTIN (EAN)   | 4050118279818   |
| Qty.         | 210 pc(s).  |
| Product data | IEC: 320 V / 12 A / 0.2 - 1.5 mm²<br>UL: 300 V / 12 A / AWG 28 - AWG 14   |
| Packaging    | Tape  |

## LSF-SMD 3.50/09/135 SN BK RL

Weidmüller Interface GmbH &amp; Co. KG

Klingenbergstraße 26

D-32758 Detmold

Germany

www.weidmueller.com

## Technical data

## Dimensions and weights

|                          |            |                 |            |
|--------------------------|------------|-----------------|------------|
| Depth                    | 12.7 mm    | Depth (inches)  | 0.5 inch   |
| Height                   | 14.45 mm   | Height (inches) | 0.569 inch |
| Height of lowest version | 14.45 mm   | Width           | 32.2 mm    |
| Width (inches)           | 1.268 inch | Net weight      | 7.871 g    |

## Temperatures

|                                  |        |
|----------------------------------|--------|
| Continuous operating temp., max. | 120 °C |
|----------------------------------|--------|

## System parameters

|  |                              |  |                       |
|--|------------------------------|--|-----------------------|
| Product family                               | OMNIMATE Signal - series LSF | Wire connection method                     | PUSH IN with actuator |
| Mounting onto the PCB                        | SMD solder connection        | Conductor outlet direction                 | 135°                  |
| Pitch in mm (P)                              | 3.5 mm                       | Pitch in inches (P)                        | 0.138 "               |
| Number of poles                              | 9                            | Pin series quantity                        | 1                     |
| Fitted by customer                           | No                           | Number of rows                             | 1                     |
| Coplanarity:                                 | 100 µm                       | Number of solder pins per pole             | 2                     |
| Stripping length                             | 8 mm                         | L1 in mm                                   | 28 mm                 |
| L1 in inches                                 | 1.104 "                      | Touch-safe protection acc. to DIN VDE 0470 | IP 20                 |
| Touch-safe protection acc. to DIN VDE 57 106 | Safe from finger touch       | Protection degree                          | IP20                  |
| Volume resistance                            | 1.60 mΩ                      |  |                       |

## Material data

|                                       |                  |                                       |          |
|---------------------------------------|------------------|---------------------------------------|----------|
| Insulating material                   | LCP GF           | Colour                                | black    |
| Colour chart (similar)                | RAL 9011         | Insulating material group             | IIIa     |
| Comparative Tracking Index (CTI)      | ≥ 175            | Moisture Level (MSL)                  | 1        |
| UL 94 flammability rating             | V-0              | Contact material                      | Cu-alloy |
| Layer structure of solder connection  | 4...6 µm Sn matt | Storage temperature, min.             | -40 °C   |
| Storage temperature, max.             | 70 °C            | Operating temperature, min.           | -50 °C   |
| Operating temperature, max.           | 120 °C           | Temperature range, installation, min. | -30 °C   |
| Temperature range, installation, max. | 120 °C           |                                       |          |

## Conductors suitable for connection

|  |                      |
|--|----------------------|
| Clamping range, min.   | 0.13 mm <sup>2</sup> |
| Clamping range, max.   | 1.5 mm <sup>2</sup>  |
| Wire connection cross section AWG, min.                              | AWG 28               |
| Wire connection cross section AWG, max.                              | AWG 14               |
| Solid, min. H05(07) V-U  | 0.2 mm <sup>2</sup>  |
| Solid, max. H05(07) V-U  | 1.5 mm <sup>2</sup>  |
| Flexible, min. H05(07) V-K   | 0.2 mm <sup>2</sup>  |
| Flexible, max. H05(07) V-K   | 1.5 mm <sup>2</sup>  |
| w. plastic collar ferrule, DIN 46228 pt 4, 0.25 mm <sup>2</sup> min. |                      |
| w. plastic collar ferrule, DIN 46228 pt 4, 0.75 mm <sup>2</sup> max. |                      |
| w. wire end ferrule, DIN 46228 pt 1, min.                            | 0.25 mm <sup>2</sup> |
| w. wire end ferrule, DIN 46228 pt 1, max.                            | 1.5 mm <sup>2</sup>  |

Creation date June 1, 2024 8:38:00 AM CEST

## LSF-SMD 3.50/09/135 SN BK RL

Weidmüller Interface GmbH &amp; Co. KG

Klingenbergstraße 26

D-32758 Detmold

Germany

www.weidmueller.com

## Technical data

|                     |  |                              |                               |       |
|---------------------|--|------------------------------|-------------------------------|-------|
| Clampable conductor | Cross-section for conductor connection | Type                         | fine-wired                    |       |
|                     |  | nominal                      | 0.25 mm <sup>2</sup>          |       |
|                     | wire end ferrule                       | Stripping length             | nominal                       | 10 mm |
|                     |  | Recommended wire-end ferrule | <a href="#">H0.25/12 HBL</a>  |       |
|                     | Cross-section for conductor connection | Type                         | fine-wired                    |       |
|                     |  | nominal                      | 0.34 mm <sup>2</sup>          |       |
|                     | wire end ferrule                       | Stripping length             | nominal                       | 10 mm |
|                     |  | Recommended wire-end ferrule | <a href="#">H0.34/12 TK</a>   |       |
|                     | Cross-section for conductor connection | Type                         | fine-wired                    |       |
|                     |  | nominal                      | 0.5 mm <sup>2</sup>           |       |
|                     | wire end ferrule                       | Stripping length             | nominal                       | 10 mm |
|                     |  | Recommended wire-end ferrule | <a href="#">H0.5/14 OR</a>    |       |
|                     | Cross-section for conductor connection | Type                         | fine-wired                    |       |
|                     |  | nominal                      | 0.75 mm <sup>2</sup>          |       |
|                     | wire end ferrule                       | Stripping length             | nominal                       | 10 mm |
|                     |  | Recommended wire-end ferrule | <a href="#">H0.75/14T HBL</a> |       |

Reference text Length of ferrules is to be chosen depending on the product and the rated voltage., The outside diameter of the plastic collar should not be larger than the pitch (P)

## Rated data acc. to IEC

|   |                        |   |                  |
|---|------------------------|---|------------------|
| tested acc. to standard   | IEC 60664-1, IEC 61984 | Rated current, min. number of poles (Tu=20°C)                         | 12 A             |
| Rated current, max. number of poles (Tu=20°C)                             | 12 A                   | Rated current, min. number of poles (Tu=40°C)                         | 12 A             |
| Rated current, max. number of poles (Tu=40°C)                             | 12 A                   | Rated voltage for surge voltage class / pollution degree II/2         | 320 V            |
| Rated voltage for surge voltage class / pollution degree III/2            | 160 V                  | Rated voltage for surge voltage class / pollution degree III/3        | 160 V            |
| Rated impulse voltage for surge voltage class/ pollution degree II/2      | 2.5 kV                 | Rated impulse voltage for surge voltage class/ pollution degree III/2 | 2.5 kV           |
| Rated impulse voltage for surge voltage class/ contamination degree III/3 | 2.5 kV                 | Short-time withstand current resistance                               | 3 x 1s with 80 A |

## Rated data acc. to CSA

|                                   |   |                                   |                |
|-----------------------------------|---|-----------------------------------|----------------|
| Institute (CSA)                   |  | Certificate No. (CSA)             | 200039-1664286 |
| Rated voltage (Use group B / CSA) | 300 V   | Rated voltage (Use group D / CSA) | 300 V          |
| Rated current (Use group B / CSA) | 10 A  | Rated current (Use group D / CSA) | 10 A           |
| Wire cross-section, AWG, min.     | AWG 28  | Wire cross-section, AWG, max.     | AWG 14         |
| Reference to approval values      | Specifications are maximum values, details - see approval certificate.              |                                   |                |

## LSF-SMD 3.50/09/135 SN BK RL

Weidmüller Interface GmbH &amp; Co. KG

Klingenbergstraße 26

D-32758 Detmold

Germany

www.weidmueller.com

## Technical data

## Rated data acc. to UL 1059

Institute (cURus)



Certificate No. (cURus)

E60693

Rated voltage (Use group B / UL 1059) 300 V

Rated current (Use group B / UL 1059) 12 A

Wire cross-section, AWG, min. AWG 28

Reference to approval values Specifications are maximum values, details - see approval certificate.

Rated voltage (Use group D / UL 1059) 300 V

Rated current (Use group D / UL 1059) 10 A

Wire cross-section, AWG, max. AWG 14

## Packing

ESD Level packaging static dissipative

VPE length 330 mm

VPE height 60 mm

Tape width (W) 56 mm

Tape pocket height (A0) 11.3 mm

Tape pocket separation (P1) 20 mm

Tape pocket separation (F) 26.2 mm

Surface resistance  $R_s = 10^9 - 10^{12} \Omega$ 

Packaging Tape

VPE width 330 mm

Tape depth (T2) 15.7 mm

Tape pocket depth (K0) 15.2 mm

Tape pocket width (B0) 44.06 mm

Tape hole separation (E) 1.75 mm

Tape reel diameter  $\varnothing$  (A) 330 mm

## Type tests

Test: Durability of markings

Test

mark of origin, type identification, pitch, approval marking UL, durability

Test: Clampable cross section

Standard

DIN EN 60999-1 section 7 and 9.1 / 12.00, DIN EN 60947-1 section 8.2.4.5.1 / 12.02

Conductor type

Type of conductor and solid 0.14 mm<sup>2</sup> conductor cross-sectionType of conductor and stranded 0.14 mm<sup>2</sup> conductor cross-sectionType of conductor and solid 1.5 mm<sup>2</sup> conductor cross-sectionType of conductor and stranded 1.5 mm<sup>2</sup> conductor cross-section

Type of conductor and AWG 24/1 conductor cross-section

Type of conductor and AWG 22/19 conductor cross-section

Type of conductor and AWG 16/1 conductor cross-section

Type of conductor and AWG 16/19 conductor cross-section

Evaluation

passed

## LSF-SMD 3.50/09/135 SN BK RL

Weidmüller Interface GmbH &amp; Co. KG

Klingenbergstraße 26

D-32758 Detmold

Germany

www.weidmueller.com

## Technical data

|   |                |   |
|---|----------------|---|
| Test for damage to and accidental loosening of conductors | Standard       | DIN EN 60999-1 section 9.4 / 12.00  |
|   | Requirement    | 0.2 kg  |
|   | Conductor type | Type of conductor and AWG 24/1 conductor cross-section                      |
|   |                | Type of conductor and AWG 24/19 conductor cross-section                     |
|   | Evaluation     | passed  |
|   | Requirement    | 0.3 kg  |
|   | Conductor type | Type of conductor and stranded 0.25 mm <sup>2</sup> conductor cross-section |
|   |                | Type of conductor and solid 0.5 mm <sup>2</sup> conductor cross-section     |
|   | Evaluation     | passed  |
|   | Requirement    | 0.4 kg  |
|   | Conductor type | Type of conductor and solid 1.5 mm <sup>2</sup> conductor cross-section     |
|   |                | Type of conductor and stranded 1.5 mm <sup>2</sup> conductor cross-section  |
|   |                | Type of conductor and AWG 16/1 conductor cross-section                      |
|   |                | Type of conductor and AWG 16/19 conductor cross-section                     |
|   | Evaluation     | passed  |
| Pull-out test   | Standard       | DIN EN 60999-1 section 9.5 / 12.00  |
|   | Requirement    | ≥10 N   |
|   | Conductor type | Type of conductor and AWG 24/1 conductor cross-section                      |
|   |                | Type of conductor and AWG 24/19 conductor cross-section                     |
|   | Evaluation     | passed  |
|   | Requirement    | ≥20 N   |
|   | Conductor type | Type of conductor and stranded 0.25 mm <sup>2</sup> conductor cross-section |
|   |                | Type of conductor and H05V-U0.5 conductor cross-section                     |
|   | Evaluation     | passed  |
|   | Requirement    | ≥40 N   |
|   | Conductor type | Type of conductor and H07V-U1.5 conductor cross-section                     |
|   |                | Type of conductor and H07V-K1.5 conductor cross-section                     |
|   |                | Type of conductor and AWG 16/1 conductor cross-section                      |
|   |                | Type of conductor and AWG 16/19 conductor cross-section                     |
|   | Evaluation     | passed  |

## LSF-SMD 3.50/09/135 SN BK RL

Weidmüller Interface GmbH &amp; Co. KG

Klingenbergstraße 26

D-32758 Detmold

Germany

www.weidmueller.com

## Technical data

## Classifications

|             |             |             |             |
|-------------|-------------|-------------|-------------|
| ETIM 6.0    | EC002643    | ETIM 7.0    | EC002643    |
| ETIM 8.0    | EC002643    | ETIM 9.0    | EC002643    |
| ECLASS 9.0  | 27-44-04-01 | ECLASS 9.1  | 27-44-04-01 |
| ECLASS 10.0 | 27-44-04-01 | ECLASS 11.0 | 27-46-01-01 |
| ECLASS 12.0 | 27-46-01-01 | ECLASS 13.0 | 27-46-01-01 |

## Important note

|                |  |
|----------------|--|
| IPC conformity | Conformity: The products are developed, manufactured and delivered according international recognized standards and norms and comply with the assured properties in the data sheet resp. fulfill decorative properties in accordance with IPC-A-610 "Class 2". Further claims on the products can be evaluated on request.   |
| Notes          | <ul style="list-style-type: none"> <li>• Additional push button colours on request</li> <li>• Operating force of slider max. 40 N</li> <li>• Rated current related to rated cross-section &amp; min. No. of poles.</li> <li>• Wire end ferrule with plastic collar to DIN 46228/4</li> <li>• Wire end ferrule without plastic collar to DIN 46228/1</li> <li>• P on drawing = pitch</li> <li>• Rated data refer only to the component itself. Clearance and creepage distances to other components are to be designed in accordance with the relevant application standards.</li> <li>• Crimping shape "A" for wire end ferrules with PZ 6/5 crimping tool recommended.</li> <li>• Long term storage of the product with average temperature of 50 °C and maximum humidity 70%, 36 months</li> </ul> |

## Approvals

Approvals



|                         |            |
|-------------------------|------------|
| ROHS                    | Conform    |
| UL File Number Search   | UL Website |
| Certificate No. (cURus) | E60693     |

**LSF-SMD 3.50/09/135 SN BK RL****Weidmüller Interface GmbH & Co. KG**

Klingenbergstraße 26

D-32758 Detmold

Germany

[www.weidmueller.com](http://www.weidmueller.com)**Technical data****Downloads**Approval/Certificate/Document of Con-  
formity[Declaration of the Manufacturer](#)

Engineering Data

[CAD data – STEP](#)

Product Change Notification

[Changeover to ESD bags for “Tape on Reel” products](#)[Umstellung auf ESD-Beutel bei „Tape on Reel“ Produkten](#)

Catalogues

[Catalogues in PDF-format](#)

Brochures

[FL DRIVES EN](#)[PI OMNIMATE LSF SMD EN](#)[FL ANALO.SIGN.CONV. EN](#)[MB DEVICE MANUF. EN](#)[FL DRIVES DE](#)[FL BUILDING SAFETY EN](#)[FL APPL LED LIGHTING EN](#)[FL INDUSTR.CONTROLS EN](#)[FL MACHINE SAFETY EN](#)[FL HEATING ELECTR EN](#)[FL APPL INVERTER EN](#)[FL BASE STATION EN](#)[FL ELEVATOR EN](#)[FL POWER SUPPLY EN](#)[FL 72H SAMPLE SER EN](#)[PO OMNIMATE EN](#)

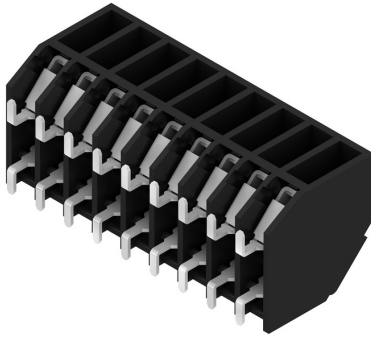
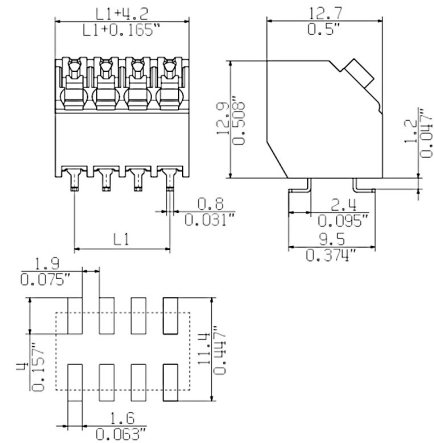
White paper surface mount technology

[Download Whitepaper](#)

**LSF-SMD 3.50/09/135 SN BK RL**

**Weidmüller Interface GmbH & Co. KG**  
 Klingenbergstraße 26  
 D-32758 Detmold  
 Germany

[www.weidmueller.com](http://www.weidmueller.com)

**Drawings**
**Product image**

**Dimensional drawing**

**Graph**

**Product benefits**


Stable solder connection

**Product benefits**


PUSH IN wire connection



**LSF-SMD 3.50/09/135 SN BK RL****Weidmüller Interface GmbH & Co. KG**

Klingenbergstraße 26

D-32758 Detmold

Germany

[www.weidmueller.com](http://www.weidmueller.com)**Accessories****Slotted screwdriver**

Slotted screwdriver with rounded blade SD DIN 5265, ISO 2380/2, output to DIN 5264, ISO 2380/1. ChromTop tip, SoftFinish grip

**General ordering data**

|            |                            |                          |
|------------|----------------------------|--------------------------|
| Type       | SDS 0.4X2.5X75             | Version                  |
| Order No.  | <a href="#">9009030000</a> | Screwdriver, Screwdriver |
| GTIN (EAN) | 4032248266944              |                          |
| Qty.       | 1 pc(s).                   |                          |

**Slotted screwdriver**

VDE insulated slot-head screwdriver, SDI DIN 7437, ISO 2380/2, drive output acc. to DIN 5264, ISO 2380/1. SoftFinish grip

**General ordering data**

|            |                            |                          |
|------------|----------------------------|--------------------------|
| Type       | SDIS 0.4X2.5X75            | Version                  |
| Order No.  | <a href="#">9008370000</a> | Screwdriver, Screwdriver |
| GTIN (EAN) | 4032248056330              |                          |
| Qty.       | 1 pc(s).                   |                          |

**LSF-SMD 3.50/09/135 SN BK RL**

**Weidmüller Interface GmbH & Co. KG**  
 Klingenbergstraße 26  
 D-32758 Detmold  
 Germany

[www.weidmueller.com](http://www.weidmueller.com)

**Drawings**
**Product benefits**

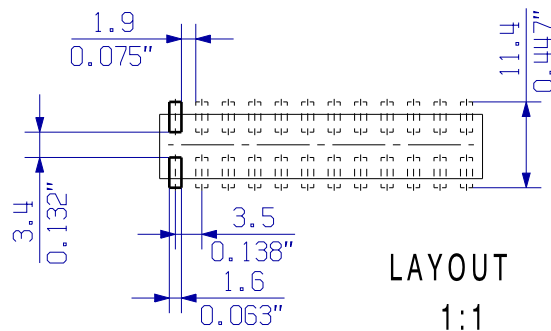
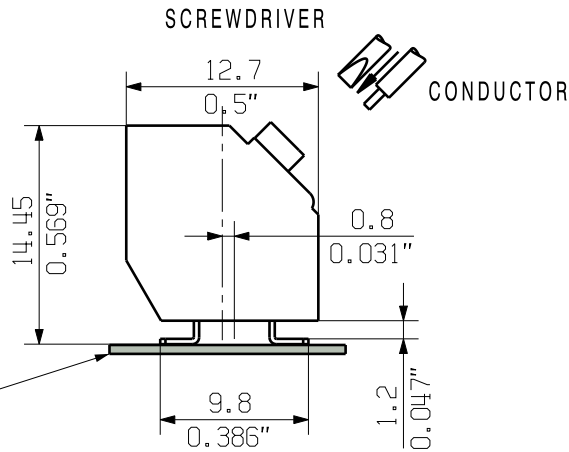
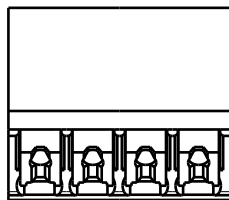
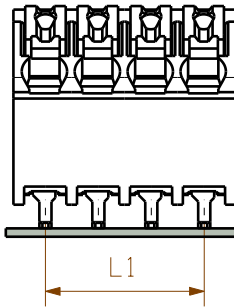
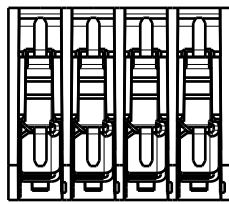

Packaged in tape-on-reel

**Dimensional drawing**

**Dimensional drawing**


MASSE OHNE TOLERANZ SIND KEINE PRUEFFMASSE  
DIMS. WITHOUT TOLERANCE ARE NOT CONTROL DIMS.

DIE DEUTSCHE VERSION IST VERBINDLICH  
THE GERMAN VERSION IS BINDING



LAYOUT  
1:1

For the mounting on PCBs, it should be noted that the rated data relates only to the PCB components alone.

The necessary creepage and clearance paths must be observed in the relevant equipment standards in accordance with IEC 664 / VDE 0110.

The current-carrying capacity and pitch tolerance is to be determined according to DIN IEC 326 part 3.

Weidmüller PCB components are rated in accordance with the DIN EN 61984 standard, and are valid for its field of application. If the components are used in accordance with the intended purpose, the components will meet all requirements with respect to the occurring of electrical, mechanical, thermic and corrosive stress.

SHOWN: LSF-SMD 3.50/04/135...

|    |         |           |
|----|---------|-----------|
| 12 | 38,5    | 1,516     |
| 11 | 35,0    | 1,378     |
| 10 | 31,5    | 1,240     |
| 9  | 28,0    | 1,102     |
| 8  | 24,5    | 0,965     |
| 7  | 21,0    | 0,827     |
| 6  | 17,5    | 0,689     |
| 5  | 14,0    | 0,551     |
| 4  | 10,5    | 0,413     |
| 3  | 7,0     | 0,276     |
| 2  | 3,5     | 0,138     |
| n  | L1 [mm] | L1 [Inch] |

|               |                |            |                               |  |   |  |
|---------------|----------------|------------|-------------------------------|--|---|--|
|               | DIN ISO 2768-m |            | 86128/5<br>25.01.16 KRUG_M 01 |  | CAT.NO.: . . .  |  |
|               | MODIFICATION   |            | DATE                          |  | NAME  |  |
|               | DRAWN          | 03.06.2015 | KRUG_M                        |  | <b>LSF-SMD 3.50/./135</b><br>LEITERPLATTENKLEMM<br>PCB TERMINAL |  |
|               | RESPONSIBLE    |            | KRUG_M                        |  |   |  |
| SCALE: 2:1    | CHECKED        | 02.02.2016 | HELIS_MA                      |  | PRODUCT FILE: LSF-SMD 3.50                                      |  |
| SUPERSEDES: . | APPROVED       |            | LANG_T                        |  |   |  |
|               |                |            |                               |  | 7358  |  |

**Weidmüller**

**C 57457 04**

DRAWING NO. SHEET 01 OF 04 SHEETS

ISSUE NO.

## Recommended reflow soldering profile

**Weidmüller Interface GmbH & Co. KG**  
Klingenbergstraße 16  
D-32758 Detmold  
Germany  
Fon: +49 5231 14-0  
Fax: +49 5231 14-292083  
www.weidmueller.com



## Reflow soldering profile

The perfect soldering profile for SMT Surface Mount Technology is one the most exiting question in SMT production. But there are more than one correct answer: The diagram of temperature-on-time is related to processing features of solder paste and to maximum load of components.

We have to consider the following parameters:

- Time for pre heating
- Maximum temperature
- Time above melting point
- Time for cooling
- Maximum heating rate
- Maximum cooling rate

We recommend a typical solder profile with associated process limits. With preheating components and board are prepared smoothly for the solder phase. Heating rate is typically  $\leq +3\text{K/s}$ . In parallel the solder paste is 'activated'. The time above melting point of 217°C the paste gets liquid and components and boards begin to connect. The maximum temperature of 245°C to 254°C should stay between 10 and 40 seconds. In the cooling phase at  $\geq -6\text{K/s}$  solder is cured. Board and components cool down while avoiding cold cracks.