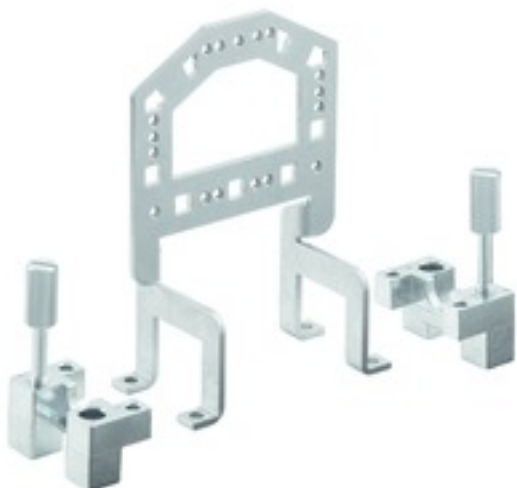


**HDC GRIP PANEL 4 ADAPT****Weidmüller Interface GmbH & Co. KG**

Klingenbergstraße 26

D-32758 Detmold

Germany

[www.weidmueller.com](http://www.weidmueller.com)**General ordering data**

Version	Heavy-duty connectors, Accessories, Grip panel
Order No.	<a href="#">1444710000</a>
Type	HDC GRIP PANEL 4 ADAPT
GTIN (EAN)	4050118250145
Qty.	1 pc(s).

**HDC GRIP PANEL 4 ADAPT****Weidmüller Interface GmbH & Co. KG**

Klingenbergstraße 26

D-32758 Detmold

Germany

[www.weidmueller.com](http://www.weidmueller.com)**Technical data****Dimensions and weights**

Net weight	124.69 g
------------	----------

**Temperatures**

Continuous operating temp., min.	-40 °C	Continuous operating temp., max.	125 °C
----------------------------------	--------	----------------------------------	--------

**Version**

Material	Steel, galvanised	Size	4
Suitable for ModuPlug®	No		

**Classifications**

ETIM 6.0	EC002943	ETIM 7.0	EC002943
ETIM 8.0	EC002943	ETIM 9.0	EC002943
ECLASS 9.0	27-44-02-92	ECLASS 9.1	27-44-01-92
ECLASS 10.0	27-44-02-92	ECLASS 11.0	27-44-02-92
ECLASS 12.0	27-44-02-92	ECLASS 13.0	27-44-02-92

**Approvals**

ROHS	Conform
------	---------

**Downloads**

Engineering Data	<a href="#">CAD data – STEP</a>
Catalogues	<a href="#">Catalogues in PDF-format</a>
Brochures	<a href="#">FL FIELDWIRING EN</a> <a href="#">FL FIELDWIRING EN</a>