

HDC MHX 3 FC**Weidmüller Interface GmbH & Co. KG**

Klingenbergstraße 26

D-32758 Detmold

Germany

www.weidmueller.com**Flexible**

The four module sizes make for individual plug solutions that save a huge amount of space. The smaller pitch translates into an optimised design too.

General ordering data

| | |
|------------|----------------------------|
| Version | Power module |
| Order No. | 1429350000 |
| Type | HDC MHX 3 FC |
| GTIN (EAN) | 4050118233476 |
| Qty. | 1 pc(s). |

HDC MHX 3 FC

Weidmüller Interface GmbH & Co. KG

Klingenbergstraße 26

D-32758 Detmold

Germany

www.weidmueller.com

Technical data

Dimensions and weights

| | | | |
|------------|---------|-----------------|------------|
| Depth | 34 mm | Depth (inches) | 1.339 inch |
| Height | 43 mm | Height (inches) | 1.693 inch |
| Width | 14.5 mm | Width (inches) | 0.571 inch |
| Net weight | 8.185 g | | |

Temperatures

| | |
|-------------------|-------------------|
| Limit temperature | -40 °C ... 125 °C |
|-------------------|-------------------|

General data

| | | | |
|--------------------------------------|--------------------|------------------------------|---------------------------------------|
| Insulation strength | 10 ¹² Ω | Material | Polycarbonate, glass fibre reinforced |
| Number of poles | 3 | Plugging cycles | ≥ 500 |
| Pollution severity | 3 | Rated current (DIN EN 61984) | 40 A |
| Rated impulse voltage (DIN EN 61984) | 8 kV | Rated voltage (DIN EN 61984) | 690 V |
| Rated voltage according to UL/CSA | 600 V | Required plug-in slots | 1 |
| Series | ModuPlug | Surge voltage category | III |
| Type | Female | UL 94 flammability rating | V-0 |

PE connection data

| | |
|--------------------|-----------------------------------|
| Connection type PE | Screw connection via module frame |
|--------------------|-----------------------------------|

Version

| | | | |
|---|--------------------|---|---------------------|
| Conductor cross-section, max. | 10 mm ² | Conductor cross-section, min. | 1.5 mm ² |
| Stripping length, rated connection | 8 mm | Type of connection | Crimp connection |
| Wire connection cross section AWG, max. | AWG 8 | Wire connection cross section AWG, min. | AWG 16 |

Classifications

| | | | |
|-------------|-------------|-------------|-------------|
| ETIM 6.0 | EC002312 | ETIM 7.0 | EC002312 |
| ETIM 8.0 | EC002312 | ETIM 9.0 | EC002312 |
| ECLASS 9.0 | 27-44-02-92 | ECLASS 9.1 | 27-44-02-18 |
| ECLASS 10.0 | 27-44-02-92 | ECLASS 11.0 | 27-44-02-92 |
| ECLASS 12.0 | 27-44-02-92 | ECLASS 13.0 | 27-44-02-92 |

Environmental Product Compliance

| | |
|------------|--|
| REACH SVHC | Potassium perfluorobutane sulfonate 29420-49-3 |
| SCIP | 1609748e-c278-4c9b-b3d1-e6215d2988cd |

Approvals

Approvals



| | |
|-------------------------|------------|
| ROHS | Conform |
| UL File Number Search | UL Website |
| Certificate No. (cURus) | E92202 |

Creation date June 6, 2024 8:02:23 AM CEST

Catalogue status 01.06.2024 / We reserve the right to make technical changes.

HDC MHX 3 FC

Weidmüller Interface GmbH & Co. KG

Klingenbergstraße 26

D-32758 Detmold

Germany

www.weidmueller.com

Technical data

Downloads

Approval/Certificate/Document of Con-
formity

[Manufacturer's declaration](#)

Engineering Data

[CAD data – STEP](#)

Product Change Notification

[Technical change - EN](#)

[Technical change - DE](#)

Catalogues

[Catalogues in PDF-format](#)

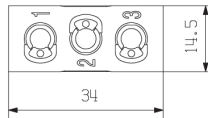
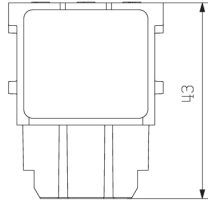
Brochures

HDC MHX 3 FC

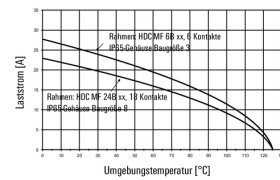
Weidmüller Interface GmbH & Co. KG
 Klingenbergstraße 26
 D-32758 Detmold
 Germany

Drawings

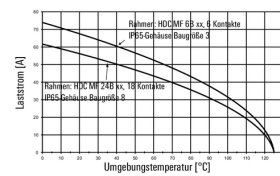
www.weidmueller.com



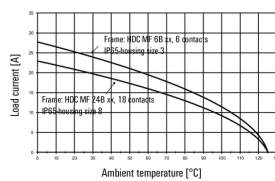
**HDC-MHX 3-Module im IP65-Gehäuse,
 Leiter H07V-K1,5:**



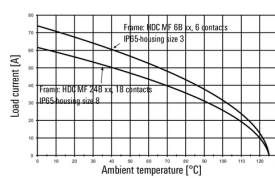
**HDC-MHX 3-Module im IP65-Gehäuse,
 Leiter H07V-K10:**



**HDC-MHX 3-modules in the IP65-housing,
 Conductor H07V-K1,5:**



**HDC-MHX 3-modules in the IP65-housing,
 Conductor H07V-K10:**



HDC MHX 3 FC**Weidmüller Interface GmbH & Co. KG**

Klingenbergstraße 26

D-32758 Detmold

Germany

www.weidmueller.com**Accessories****With short guiding pin****General ordering data**

| | | |
|------------|----------------------------|---------|
| Type | HDC MFGS 24B AF | Version |
| Order No. | 2736950000 | Frame |
| GTIN (EAN) | 4050118823011 | |
| Qty. | 1 pc(s). | |
| Type | HDC MFGS 24B FA | Version |
| Order No. | 2736960000 | Frame |
| GTIN (EAN) | 4050118823028 | |
| Qty. | 1 pc(s). | |

Standard**General ordering data**

| | | |
|------------|----------------------------|---------|
| Type | HDC MF 6B BA | Version |
| Order No. | 1428940000 | Frame |
| GTIN (EAN) | 4050118233353 | |
| Qty. | 1 pc(s). | |
| Type | HDC MF 6B AB | Version |
| Order No. | 1428920000 | Frame |
| GTIN (EAN) | 4050118233414 | |
| Qty. | 1 pc(s). | |

HDC MHX 3 FC**Weidmüller Interface GmbH & Co. KG**

Klingenbergstraße 26

D-32758 Detmold

Germany

www.weidmueller.com**Accessories****Standard****General ordering data**

| | | |
|------------|----------------------------|---------|
| Type | HDC MF 10B AC | Version |
| Order No. | 1428960000 | Frame |
| GTIN (EAN) | 4050118233223 | |
| Qty. | 1 pc(s). | |
| Type | HDC MF 10B CA | Version |
| Order No. | 1428980000 | Frame |
| GTIN (EAN) | 4050118233278 | |
| Qty. | 1 pc(s). | |

Standard**General ordering data**

| | | |
|------------|----------------------------|---------|
| Type | HDC MF 24B AF | Version |
| Order No. | 1429050000 | Frame |
| GTIN (EAN) | 4050118233285 | |
| Qty. | 1 pc(s). | |
| Type | HDC MF 24B FA | Version |
| Order No. | 1429070000 | Frame |
| GTIN (EAN) | 4050118233520 | |
| Qty. | 1 pc(s). | |

HDC MHX 3 FC**Weidmüller Interface GmbH & Co. KG**

Klingenbergstraße 26

D-32758 Detmold

Germany

www.weidmueller.com**Accessories****With long guiding pin****General ordering data**

| | | |
|------------|----------------------------|---------|
| Type | HDC MFGL 10B AC | Version |
| Order No. | 2736990000 | Frame |
| GTIN (EAN) | 4050118823042 | |
| Qty. | 1 pc(s). | |
| Type | HDC MFGL 10B CA | Version |
| Order No. | 2737000000 | Frame |
| GTIN (EAN) | 4050118823059 | |
| Qty. | 1 pc(s). | |

With short guiding pin**General ordering data**

| | | |
|------------|----------------------------|---------|
| Type | HDC MFGS 6B BA | Version |
| Order No. | 2736900000 | Frame |
| GTIN (EAN) | 4050118822267 | |
| Qty. | 1 pc(s). | |
| Type | HDC MFGS 6B AB | Version |
| Order No. | 2736890000 | Frame |
| GTIN (EAN) | 4050118822250 | |
| Qty. | 1 pc(s). | |

HDC MHX 3 FC

Weidmüller Interface GmbH & Co. KG

Klingenbergstraße 26

D-32758 Detmold

Germany

www.weidmueller.com

Accessories

Crimp contacts HX



Crimps provide a electrical and mechanical connection between wire and contact that is both secure and reliable. The optimal crimp connection is gas-tight and corrosion-resistant.

General ordering data

| | | |
|------------|----------------------------|--|
| Type | HDC C HX BM1.5AG | Version |
| Order No. | 1002950000 | Heavy-duty connectors, Crimp contact, MixMate, Female, Conductor |
| GTIN (EAN) | 4032248697236 | cross-section, max.: 1.5, turned, Copper alloy |
| Qty. | 25 pc(s). | |
| Type | HDC C HX BM6.0AG | Version |
| Order No. | 1002980000 | Heavy-duty connectors, Crimp contact, MixMate, Female, Conductor |
| GTIN (EAN) | 4032248697267 | cross-section, max.: 6, turned, Copper alloy |
| Qty. | 25 pc(s). | |
| Type | HDC C HX BM4.0AG | Version |
| Order No. | 1002970000 | Heavy-duty connectors, Crimp contact, HQ, MixMate, Female, |
| GTIN (EAN) | 4032248697250 | Conductor cross-section, max.: 4, turned, Copper alloy |
| Qty. | 25 pc(s). | |
| Type | HDC C HX BM2.5AG | Version |
| Order No. | 1002960000 | Heavy-duty connectors, Crimp contact, MixMate, Female, Conductor |
| GTIN (EAN) | 4032248697243 | cross-section, max.: 2.5, turned, Copper alloy |
| Qty. | 25 pc(s). | |
| Type | HDC C MHX BM10.0AG | Version |
| Order No. | 2494560000 | Heavy-duty connectors, Crimp contact, Female, Conductor cross- |
| GTIN (EAN) | 4050118504538 | section, max.: 8, turned, Copper alloy |
| Qty. | 25 pc(s). | |

With short guiding pin



General ordering data

| | | |
|------------|----------------------------|---------|
| Type | HDC MFGS 10B CA | Version |
| Order No. | 2736920000 | Frame |
| GTIN (EAN) | 4050118822281 | |
| Qty. | 1 pc(s). | |

HDC MHX 3 FC

Weidmüller Interface GmbH & Co. KG

Klingenbergstraße 26

D-32758 Detmold

Germany

www.weidmueller.com

Accessories

| | | |
|------------|----------------------------|---------|
| Type | HDC MFGS 10B AC | Version |
| Order No. | 2736910000 | Frame |
| GTIN (EAN) | 4050118822274 | |
| Qty. | 1 pc(s). | |

Standard



General ordering data

| | | |
|------------|----------------------------|---------|
| Type | HDC MF 16B DA | Version |
| Order No. | 1429030000 | Frame |
| GTIN (EAN) | 4050118233407 | |
| Qty. | 1 pc(s). | |
| Type | HDC MF 16B AD | Version |
| Order No. | 1429010000 | Frame |
| GTIN (EAN) | 4050118233315 | |
| Qty. | 1 pc(s). | |

With short guiding pin



General ordering data

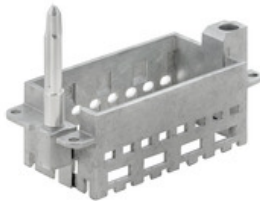
| | | |
|------------|----------------------------|---------|
| Type | HDC MFGS 16B DA | Version |
| Order No. | 2736940000 | Frame |
| GTIN (EAN) | 4050118823004 | |
| Qty. | 1 pc(s). | |
| Type | HDC MFGS 16B AD | Version |
| Order No. | 2736930000 | Frame |
| GTIN (EAN) | 4050118822298 | |
| Qty. | 1 pc(s). | |

HDC MHX 3 FC**Weidmüller Interface GmbH & Co. KG**

Klingenbergstraße 26

D-32758 Detmold

Germany

www.weidmueller.com**Accessories****With long guiding pin****General ordering data**

| | | |
|------------|----------------------------|---------|
| Type | HDC MFGL 16B DA | Version |
| Order No. | 2737020000 | Frame |
| GTIN (EAN) | 4050118823073 | |
| Qty. | 1 pc(s). | |
| Type | HDC MFGL 16B AD | Version |
| Order No. | 2737010000 | Frame |
| GTIN (EAN) | 4050118823066 | |
| Qty. | 1 pc(s). | |

With long guiding pin**General ordering data**

| | | |
|------------|----------------------------|---------|
| Type | HDC MFGL 6B AB | Version |
| Order No. | 2736970000 | Frame |
| GTIN (EAN) | 4050118823035 | |
| Qty. | 1 pc(s). | |
| Type | HDC MFGL 6B BA | Version |
| Order No. | 2736980000 | Frame |
| GTIN (EAN) | 4050118822908 | |
| Qty. | 1 pc(s). | |

HDC MHX 3 FC**Weidmüller Interface GmbH & Co. KG**

Klingenbergstraße 26

D-32758 Detmold

Germany

www.weidmueller.com**Accessories****With long guiding pin****General ordering data**

| | | |
|------------|----------------------------|---------|
| Type | HDC MFGL 24B FA | Version |
| Order No. | 2737040000 | Frame |
| GTIN (EAN) | 4050118823097 | |
| Qty. | 1 pc(s). | |
| Type | HDC MFGL 24B AF | Version |
| Order No. | 2737030000 | Frame |
| GTIN (EAN) | 4050118823080 | |
| Qty. | 1 pc(s). | |