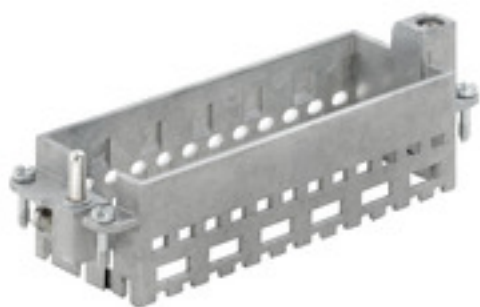


HDC MF 24B FA**Weidmüller Interface GmbH & Co. KG**

Klingenbergstraße 26

D-32758 Detmold

Germany

www.weidmueller.com**General ordering data**

Version	Frame
Order No.	1429070000
Type	HDC MF 24B FA
GTIN (EAN)	4050118233520
Qty.	1 pc(s).

HDC MF 24B FA

Weidmüller Interface GmbH & Co. KG

Klingenbergstraße 26

D-32758 Detmold

Germany

www.weidmueller.com

Technical data

Dimensions and weights

Depth	37.35 mm	Depth (inches)	1.47 inch
Height	36.4 mm	Height (inches)	1.433 inch
Width	111 mm	Width (inches)	4.37 inch
Net weight	97.1 g		

Temperatures

Limit temperature	-40 °C ... 125 °C
-------------------	-------------------

General data

Material	Diecast zinc	Number of slots	6
Plugging cycles	≥ 500	Series	ModuPlug
Size	8		

PE connection data

Conductor cross-section, max.	10 mm ²	Conductor cross-section, min.	0.5 mm ²
Connection type PE	Screw connection	Tightening torque, max. PE connection	1.2 Nm

Classifications

ETIM 6.0	EC002312	ETIM 7.0	EC002312
ETIM 8.0	EC002312	ETIM 9.0	EC002312
ECLASS 9.0	27-44-02-06	ECLASS 9.1	27-44-02-06
ECLASS 10.0	27-44-02-06	ECLASS 11.0	27-44-02-06
ECLASS 12.0	27-44-02-92	ECLASS 13.0	27-44-02-92

Environmental Product Compliance

REACH SVHC	Lead 7439-92-1
SCIP	d447edfa-0214-4f34-b5ba-82eae491b46a

Approvals

Approvals



ROHS	Conform
UL File Number Search	UL Website
Certificate No. (cURus)	E92202

Downloads

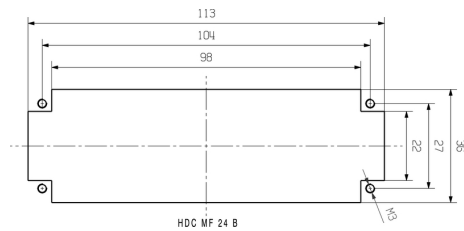
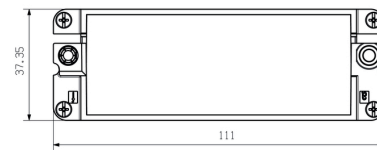
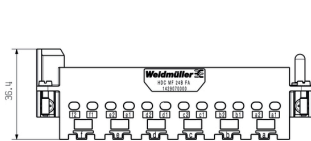
Approval/Certificate/Document of Conformity	Manufacturer's declaration
Engineering Data	CAD data – STEP
Catalogues	Catalogues in PDF-format
Brochures	FL FIELDWIRING EN FL FIELDWIRING EN

HDC MF 24B FA

Weidmüller Interface GmbH & Co. KG
Klingenbergstraße 26
D-32758 Detmold
Germany

www.weidmueller.com

Drawings



HDC MF 24B FA**Weidmüller Interface GmbH & Co. KG**

Klingenbergstraße 26

D-32758 Detmold

Germany

www.weidmueller.com**Accessories****HDC ModuPlug**

Various accessories are available for our inserts. This includes coding elements for the inserts.

General ordering data

Type	HDC CM GUIDING PIN	Version
Order No.	1202660000	Heavy-duty connectors, Accessories, Accessories
GTIN (EAN)	4032248985258	
Qty.	100 pc(s).	
Type	HDC CM GUIDING SOCKET	Version
Order No.	1202670000	Heavy-duty connectors, Accessories, Accessories
GTIN (EAN)	4032248985135	
Qty.	100 pc(s).	

Miscellaneous

In addition to heavy-duty connectors, RockStar® includes the appropriate accessories for effective, functional and safe system cabling; e.g. coding systems, shield clamps, cover plates and replacement seals

General ordering data

Type	HDC MF FIXING	Version
Order No.	1480290000	Transport lock
GTIN (EAN)	4050118288704	
Qty.	20 pc(s).	
Type	HDC MF CA16 PE	Version
Order No.	1480940000	PE extension
GTIN (EAN)	4050118289657	
Qty.	10 pc(s).	

HDC MF 24B FA**Weidmüller Interface GmbH & Co. KG**

Klingenbergstraße 26

D-32758 Detmold

Germany

www.weidmueller.com**Accessories****Shield lever**

In addition to heavy-duty connectors, RockStar® includes the appropriate accessories for effective, functional and safe system cabling; e.g. coding systems, shield clamps, cover plates and replacement seals

General ordering data

Type	HDC MSL24	Version
Order No.	1435440000	Shield clamp
GTIN (EAN)	4050118240009	
Qty.	1 pc(s).	