

HDC MHE 20 FC**Weidmüller Interface GmbH & Co. KG**

Klingenbergstraße 26

D-32758 Detmold

Germany

www.weidmueller.com**Flexible**

The four module sizes make for individual plug solutions that save a huge amount of space. The smaller pitch translates into an optimised design too.

General ordering data

Version	Signal module, Socket connector, Module
Order No.	1428930000
Type	HDC MHE 20 FC
GTIN (EAN)	4050118233261
Qty.	1 pc(s).

HDC MHE 20 FC

Weidmüller Interface GmbH & Co. KG

Klingenbergstraße 26

D-32758 Detmold

Germany

www.weidmueller.com

Technical data

Dimensions and weights

Depth	34 mm	Depth (inches)	1.339 inch
Height	42.3 mm	Height (inches)	1.665 inch
Width	29.2 mm	Width (inches)	1.15 inch
Net weight	23.385 g		

Temperatures

Limit temperature	-40 °C ... 125 °C
-------------------	-------------------

General data

Insulation strength	10 ¹² Ω	Material	Polycarbonate, glass fibre reinforced
Number of poles	20	Plugging cycles	≥ 500
Pollution severity	3	Rated current (DIN EN 61984)	16 A
Rated impulse voltage (DIN EN 61984)	6 kV	Rated voltage (DIN EN 61984)	500 V
Rated voltage according to UL/CSA	600 V	Required plug-in slots	2
Series	ModuPlug	Surge voltage category	III
Type	Female	UL 94 flammability rating	V-0

PE connection data

Connection type PE	Screw connection via module frame
--------------------	-----------------------------------

Version

Conductor cross-section, max.	4 mm ²	Conductor cross-section, min.	0.5 mm ²
Stripping length, rated connection	7.5 mm	Type of connection	Crimp connection
Wire connection cross section AWG, max.	AWG 12	Wire connection cross section AWG, min.	AWG 20

Classifications

ETIM 6.0	EC002312	ETIM 7.0	EC002312
ETIM 8.0	EC002312	ETIM 9.0	EC002312
ECLASS 9.0	27-44-02-92	ECLASS 9.1	27-44-02-18
ECLASS 10.0	27-44-02-92	ECLASS 11.0	27-44-02-92
ECLASS 12.0	27-44-02-92	ECLASS 13.0	27-44-02-92

Environmental Product Compliance

REACH SVHC	Potassium perfluorobutane sulfonate 29420-49-3
SCIP	1609748e-c278-4c9b-b3d1-e6215d2988cd

Approvals

Approvals



ROHS	Conform
UL File Number Search	UL Website
Certificate No. (cURus)	E92202

Creation date June 4, 2024 3:37:53 PM CEST

Catalogue status 01.06.2024 / We reserve the right to make technical changes.

HDC MHE 20 FC

Weidmüller Interface GmbH & Co. KG

Klingenbergstraße 26

D-32758 Detmold

Germany

www.weidmueller.com

Technical data

Downloads

Approval/Certificate/Document of Con-
formity

[Manufacturer's declaration](#)

Engineering Data

[CAD data – STEP](#)

Catalogues

[Catalogues in PDF-format](#)

Brochures

[FL FIELDWIRING EN](#)

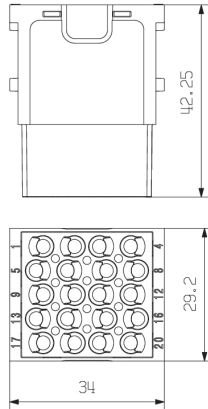
[FL FIELDWIRING EN](#)

HDC MHE 20 FC

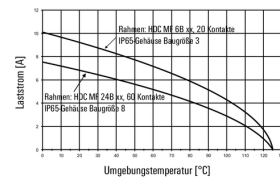
Weidmüller Interface GmbH & Co. KG
 Klingenbergstraße 26
 D-32758 Detmold
 Germany

www.weidmueller.com

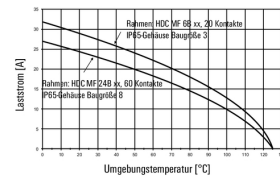
Drawings



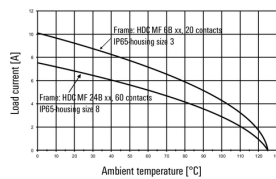
**HDC-MHE 20-Module im IP65-Gehäuse,
 Leiter H05V-K0,5:**



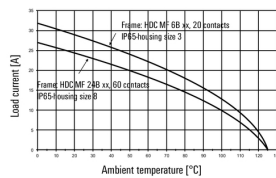
**HDC-MHE 20-Module im IP65-Gehäuse,
 Leiter H07V-K4,0:**



**HDC-MHE 20-modules in the IP65-housing,
 Conductor H05V-K0.5:**



**HDC-MHE 20-modules in the IP65-housing,
 Conductor H07V-K4.0:**



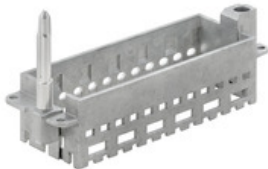
HDC MHE 20 FC

Weidmüller Interface GmbH & Co. KG
Klingenbergstraße 26
D-32758 Detmold
Germany

www.weidmueller.com

Accessories**With long guiding pin****General ordering data**

Type	HDC MFGL 10B AC	Version
Order No.	2736990000	Frame
GTIN (EAN)	4050118823042	
Qty.	1 pc(s).	
Type	HDC MFGL 10B CA	Version
Order No.	2737000000	Frame
GTIN (EAN)	4050118823059	
Qty.	1 pc(s).	

With long guiding pin**General ordering data**

Type	HDC MFGL 24B AF	Version
Order No.	2737030000	Frame
GTIN (EAN)	4050118823080	
Qty.	1 pc(s).	
Type	HDC MFGL 24B FA	Version
Order No.	2737040000	Frame
GTIN (EAN)	4050118823097	
Qty.	1 pc(s).	

HDC MHE 20 FC

Weidmüller Interface GmbH & Co. KG
Klingenbergstraße 26
D-32758 Detmold
Germany

www.weidmueller.com

Accessories**With short guiding pin****General ordering data**

Type	HDC MFGS 10B CA	Version
Order No.	2736920000	Frame
GTIN (EAN)	4050118822281	
Qty.	1 pc(s).	
Type	HDC MFGS 10B AC	Version
Order No.	2736910000	Frame
GTIN (EAN)	4050118822274	
Qty.	1 pc(s).	

With short guiding pin**General ordering data**

Type	HDC MFGS 16B DA	Version
Order No.	2736940000	Frame
GTIN (EAN)	4050118823004	
Qty.	1 pc(s).	
Type	HDC MFGS 16B AD	Version
Order No.	2736930000	Frame
GTIN (EAN)	4050118822298	
Qty.	1 pc(s).	

HDC MHE 20 FC**Weidmüller Interface GmbH & Co. KG**

Klingenbergstraße 26

D-32758 Detmold

Germany

www.weidmueller.com**Accessories****With long guiding pin****General ordering data**

Type	HDC MFGL 16B AD	Version
Order No.	2737010000	Frame
GTIN (EAN)	4050118823066	
Qty.	1 pc(s).	
Type	HDC MFGL 16B DA	Version
Order No.	2737020000	Frame
GTIN (EAN)	4050118823073	
Qty.	1 pc(s).	

Standard**General ordering data**

Type	HDC MF 16B DA	Version
Order No.	1429030000	Frame
GTIN (EAN)	4050118233407	
Qty.	1 pc(s).	
Type	HDC MF 16B AD	Version
Order No.	1429010000	Frame
GTIN (EAN)	4050118233315	
Qty.	1 pc(s).	

HDC MHE 20 FC

Weidmüller Interface GmbH & Co. KG

Klingenbergstraße 26

D-32758 Detmold

Germany

www.weidmueller.com

Accessories

Crimp contacts HE



Crimps provide a electrical and mechanical connection between wire and contact that is both secure and reliable. The optimal crimp connection is gas-tight and corrosion-resistant.

General ordering data

Type	HDC-C-HE-BM0.75-1.00AG	Version
Order No.	1201200000	Heavy-duty connectors, Crimp contact, HE, HEE, HQ, MixMate,
GTIN (EAN)	4008190044480	Female, Conductor cross-section, max.: 1, turned, Copper alloy
Qty.	100 pc(s).	
Type	HDC-C-HE-BM0.5AG	Version
Order No.	1201100000	Heavy-duty connectors, Crimp contact, HE, HEE, HQ, MixMate,
GTIN (EAN)	4008190142698	Female, Conductor cross-section, max.: 0.5, turned, Copper alloy
Qty.	100 pc(s).	
Type	HDC-C-HE-BM2.5AG	Version
Order No.	1201400000	Heavy-duty connectors, Crimp contact, HE, HEE, HQ, MixMate,
GTIN (EAN)	4008190047078	Female, Conductor cross-section, max.: 2.5, turned, Copper alloy
Qty.	100 pc(s).	
Type	HDC-C-HE-BM2.5AU	Version
Order No.	1651500000	Heavy-duty connectors, Crimp contact, HE, HEE, HQ, MixMate,
GTIN (EAN)	4008190400170	Female, Conductor cross-section, max.: 2.5, turned, Copper alloy
Qty.	100 pc(s).	
Type	HDC-C-HE-BM4.0AU	Version
Order No.	1651510000	Heavy-duty connectors, Crimp contact, HE, HEE, HQ, MixMate,
GTIN (EAN)	4008190400187	Female, Conductor cross-section, max.: 4, turned, Copper alloy
Qty.	100 pc(s).	
Type	HDC-C-HE-BM4.65AU	Version
Order No.	1116530000	Heavy-duty connectors, Crimp contact, HE, HEE, HQ, MixMate,
GTIN (EAN)	4032248897254	Female, Conductor cross-section, max.: 4.65, turned, Copper alloy
Qty.	100 pc(s).	
Type	HDC-C-HE-BM4.0AG	Version
Order No.	1201500000	Heavy-duty connectors, Crimp contact, HE, HEE, HQ, MixMate,
GTIN (EAN)	4008190148096	Female, Conductor cross-section, max.: 4, turned, Copper alloy
Qty.	100 pc(s).	
Type	HDC-C-HE-BM0.5AU	Version
Order No.	1651470000	Heavy-duty connectors, Crimp contact, HE, HEE, HQ, MixMate,
GTIN (EAN)	4008190400149	Female, Conductor cross-section, max.: 0.5, turned, Copper alloy
Qty.	100 pc(s).	
Type	HDC-C-HE-BM1.5AG	Version
Order No.	1201300000	Heavy-duty connectors, Crimp contact, HE, HEE, HQ, MixMate,
GTIN (EAN)	4008190100346	Female, Conductor cross-section, max.: 1.5, turned, Copper alloy
Qty.	100 pc(s).	
Type	HDC-C-HE-BM1.5AU	Version
Order No.	1651490000	Heavy-duty connectors, Crimp contact, HE, HEE, HQ, MixMate,
GTIN (EAN)	4008190400163	Female, Conductor cross-section, max.: 1.5, turned, Copper alloy
Qty.	100 pc(s).	

Creation date June 4, 2024 3:37:53 PM CEST

Catalogue status 01.06.2024 / We reserve the right to make technical changes.

HDC MHE 20 FC

Weidmüller Interface GmbH & Co. KG

Klingenbergstraße 26

D-32758 Detmold

Germany

www.weidmueller.com

Accessories

Type	HDC-C-HE-BM0.75-1.00AU	Version
Order No.	1651480000	Heavy-duty connectors, Crimp contact, HE, HEE, HQ, MixMate,
GTIN (EAN)	4008190400156	Female, Conductor cross-section, max.: 1, turned, Copper alloy
Qty.	100 pc(s).	

With short guiding pin



General ordering data

Type	HDC MFGS 6B BA	Version
Order No.	2736900000	Frame
GTIN (EAN)	4050118822267	
Qty.	1 pc(s).	

Type	HDC MFGS 6B AB	Version
Order No.	2736890000	Frame
GTIN (EAN)	4050118822250	
Qty.	1 pc(s).	

With short guiding pin



General ordering data

Type	HDC MFGS 24B FA	Version
Order No.	2736960000	Frame
GTIN (EAN)	4050118823028	
Qty.	1 pc(s).	

Type	HDC MFGS 24B AF	Version
Order No.	2736950000	Frame
GTIN (EAN)	4050118823011	
Qty.	1 pc(s).	

HDC MHE 20 FC**Weidmüller Interface GmbH & Co. KG**

Klingenbergstraße 26

D-32758 Detmold

Germany

www.weidmueller.com**Accessories****Standard****General ordering data**

Type	HDC MF 10B AC	Version
Order No.	1428960000	Frame
GTIN (EAN)	4050118233223	
Qty.	1 pc(s).	
Type	HDC MF 10B CA	Version
Order No.	1428980000	Frame
GTIN (EAN)	4050118233278	
Qty.	1 pc(s).	

With long guiding pin**General ordering data**

Type	HDC MFGL 6B BA	Version
Order No.	2736980000	Frame
GTIN (EAN)	4050118822908	
Qty.	1 pc(s).	
Type	HDC MFGL 6B AB	Version
Order No.	2736970000	Frame
GTIN (EAN)	4050118823035	
Qty.	1 pc(s).	

HDC MHE 20 FC**Weidmüller Interface GmbH & Co. KG**

Klingenbergstraße 26

D-32758 Detmold

Germany

www.weidmueller.com**Accessories****Standard****General ordering data**

Type	HDC MF 24B AF	Version
Order No.	1429050000	Frame
GTIN (EAN)	4050118233285	
Qty.	1 pc(s).	
Type	HDC MF 24B FA	Version
Order No.	1429070000	Frame
GTIN (EAN)	4050118233520	
Qty.	1 pc(s).	

Standard**General ordering data**

Type	HDC MF 6B BA	Version
Order No.	1428940000	Frame
GTIN (EAN)	4050118233353	
Qty.	1 pc(s).	
Type	HDC MF 6B AB	Version
Order No.	1428920000	Frame
GTIN (EAN)	4050118233414	
Qty.	1 pc(s).	