

**KLBUE 3-8 RC TS27****Weidmüller Interface GmbH & Co. KG**

Klingenbergstraße 26

D-32758 Detmold

Germany

[www.weidmueller.com](http://www.weidmueller.com)**Product image****Shielding and earthing**

Our protective earth conductor and shielding terminals featuring different connection technologies allow you to effectively protect both people and equipment from interference, such as electrical or magnetic fields. A comprehensive range of accessories rounds off our range.

**General ordering data**

Version	Clamping yoke, Clamping yoke, PA 66 GF 30
Order No.	<a href="#">1403070000</a>
Type	KLBUE 3-8 RC TS27
GTIN (EAN)	4050118204780
Qty.	1 pc(s).

**KLBUE 3-8 RC TS27****Weidmüller Interface GmbH & Co. KG**

Klingenbergstraße 26

D-32758 Detmold

Germany

www.weidmueller.com

**Technical data****Dimensions and weights**

Depth	50 mm	Depth (inches)	1.969 inch
Height	67.5 mm	Height (inches)	2.657 inch
Width	35 mm	Width (inches)	1.378 inch
Net weight	61.19 g		

**Temperatures**

Storage temperature	-25 °C...55 °C	Continuous operating temp., min.	-25
Continuous operating temp., max.	105		

**Material data**

Material	PA 66 GF 30	Colour	black, Silver grey
UL 94 flammability rating	V-0		

**System specifications**

Version	For a shield connection, With resistor	Rail	TS 27
---------	---	------	-------

**Additional technical data**

Explosion-tested version	No	Installation advice	Direct mounting
--------------------------	----	---------------------	-----------------

**Conductors for clamping (rated connection)**

Cable diameter, max.	8 mm	Cable diameter, min.	3 mm
Stripping length	22 mm		

**General**

Installation advice	Direct mounting	Rail	TS 27
---------------------	-----------------	------	-------

**Rating data**

Rated voltage	230 V		
---------------	-------	--	--

**Classifications**

ETIM 6.0	EC002020	ETIM 7.0	EC002020
ETIM 8.0	EC002020	ETIM 9.0	EC002020
ECLASS 9.0	27-14-11-50	ECLASS 9.1	27-14-11-50
ECLASS 10.0	27-14-11-50	ECLASS 11.0	27-14-11-50
ECLASS 12.0	27-14-11-50	ECLASS 13.0	27-25-01-20

**Environmental Product Compliance**

REACH SVHC	Lead 7439-92-1		
SCIP	6fc8563f-82a2-46cf-b3da-0e2c7ddd4382		
RoHS Compliance Status	Compliant with exemption		
RoHS Exemption (if applicable/known)	6c		

**KLBUE 3-8 RC TS27****Weidmüller Interface GmbH & Co. KG**

Klingenbergstraße 26

D-32758 Detmold

Germany

[www.weidmueller.com](http://www.weidmueller.com)**Technical data****Approvals**

ROHS	Conform
------	---------

**Downloads**

Engineering Data	<a href="#">CAD data – STEP</a>
User Documentation	<a href="#">Beipackzettel_KLBUE_RC.pdf</a> <a href="#">StorageConditionsTerminalBlocks</a>
Catalogues	<a href="#">Catalogues in PDF-format</a>
Brochures	

### KLBU 3-8 RC TS27

**Weidmüller Interface GmbH & Co. KG**

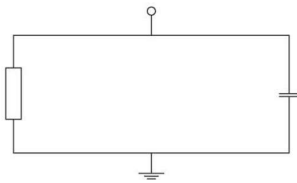
Klingenbergstraße 26

D-32758 Detmold

Germany

[www.weidmueller.com](http://www.weidmueller.com)

## Drawings



## KLBUE 3-8 RC TS27

Weidmüller Interface GmbH &amp; Co. KG

Klingenbergstraße 26

D-32758 Detmold

Germany

www.weidmueller.com

## Accessories

## Steel



Steel DIN rails are the most widespread on the market. Among metal DIN rails, they have the lowest shortcircuit protection, similar to stainless steel.

## General ordering data

Type	TS 27X12.5M/ST/F.ZN	Version
Order No.	<a href="#">1802690000</a>	Terminal rails, Rail, DIN EN 60715, Steel
GTIN (EAN)	4032248257201	
Qty.	2 m	

## Blank, adhesive backing



SM is a MultiCard marker for labelling control and signalling devices. The tags are clipped into the carriers or attached by means of the adhesive film already fitted to them. Customised tags can be created with the PrintJet CONNECT or Plotter marking systems.

- Users can quickly produce tags to suit their needs
- No need to stock expensive standard tags
- Highly resistant printing quality when using the PrintJet as a substitute for engraving
- For extreme demands, we recommend the ETO SM protective film
- Holders can be used for the 22-mm or 30-mm-diameter push-buttons from Siemens, ABB, Moeller and Télémécanique

**For custom printing:** Please send us a file of our labeling software M-Print PRO or M-Print PRO Online (without installation) for your labeling specifications.

## General ordering data

Type	SM 27/8 K MC NE WS	Version
Order No.	<a href="#">1812630000</a>	SwitchMark, Device markers, 8 x 27 mm, white
GTIN (EAN)	4032248296033	
Qty.	80 pc(s).	

**KLBUE 3-8 RC TS27****Weidmüller Interface GmbH & Co. KG**

Klingenbergstraße 26

D-32758 Detmold

Germany

[www.weidmueller.com](http://www.weidmueller.com)**Accessories****Tools**

Our special tools support within the cabinet process in the area of wiring or also the assembly of the components.

**General ordering data**

Type	BTWZ KLBUE	Version
Order No.	<a href="#">1742630000</a>	Tools, Operating tool
GTIN (EAN)	4008190980764	
Qty.	1 pc(s).	

**Slotted screwdriver**

Slotted screwdriver with rounded blade SD DIN 5265, ISO 2380/2, output to DIN 5264, ISO 2380/1. ChromTop tip, SoftFinish grip

**General ordering data**

Type	SDS 0.6X3.5X100	Version
Order No.	<a href="#">9008330000</a>	Screwdriver, Screwdriver
GTIN (EAN)	4032248056286	
Qty.	1 pc(s).	