

**IE-AD-M12XRJ45-180****Weidmüller Interface GmbH & Co. KG**

Klingenbergstraße 26

D-32758 Detmold

Germany

[www.weidmueller.com](http://www.weidmueller.com)**General ordering data**

Version	Adapter, RJ45, M12, Cat.6A / Class EA (ISO/IEC 11801 2010), IP67, M12 socket to RJ45 socket
Order No.	<a href="#">1400620000</a>
Type	IE-AD-M12XRJ45-180
GTIN (EAN)	4050118202526
Qty.	1 pc(s).

**IE-AD-M12XRJ45-180****Weidmüller Interface GmbH & Co. KG**

Klingenbergstraße 26

D-32758 Detmold

Germany

www.weidmueller.com

**Technical data****Dimensions and weights**

Wall thickness, min.	0.9 mm	Wall thickness, max.	3 mm
Net weight	62 g		

**Temperatures**

Operating temperature	-25 °C...85 °C
-----------------------	----------------

**Technical data customisable plug-in connectors**

Category	Cat.6A / Class EA (ISO/IEC 11801 2010)	Coding	X-coded
Contact material	Copper alloy	Contact surface	Gold-plated
Housing main material	Zinc diecast	Insulation strength	100 MΩ
Number of poles	8	Plugging cycles	≥ 100 (M12), 750 (RJ45)
Protection degree	IP67	Rated voltage	50 V

**General Info**

Number of poles	8	Connection 1	RJ45
Connection 2	M12	Description of article	Adapter, straight
Configuration	M12 socket to RJ45 socket	Housing main material	Zinc diecast
Category	Cat.6A / Class EA (ISO/IEC 11801 2010)	Connection thread	M12
Contact material	Copper alloy	Contact surface	Gold-plated
Shielding	360° shield contact	Protection degree	IP67
Plugging cycles	≥ 100 (M12), 750 (RJ45)		

**Electrical properties**

Insulation strength	100 MΩ	Rated voltage	50 V
---------------------	--------	---------------	------

**Standards**

Connector standard	IEC 61076-2-109, IEC 60603-7-51
--------------------	---------------------------------

**General technical specifications**

Coding	X-coded	Connection thread	M12
Contact material	Copper alloy	Contact surface	Gold-plated
Housing main material	Zinc diecast	Insulation strength	100 MΩ
Number of poles	8	Plugging cycles	≥ 100 (M12), 750 (RJ45)
Protection degree	IP67	Rated voltage	50 V

**Classifications**

ETIM 6.0	EC000313	ETIM 7.0	EC000313
ETIM 8.0	EC000313	ETIM 9.0	EC000313
ECLASS 9.0	27-44-03-20	ECLASS 9.1	19-17-01-25
ECLASS 10.0	27-44-03-20	ECLASS 11.0	27-44-03-20
ECLASS 12.0	27-44-03-20	ECLASS 13.0	27-44-03-20

**IE-AD-M12XRJ45-180****Weidmüller Interface GmbH & Co. KG**

Klingenbergstraße 26

D-32758 Detmold

Germany

[www.weidmueller.com](http://www.weidmueller.com)**Technical data****Environmental Product Compliance**

REACH SVHC	Lead 7439-92-1
SCIP	67cf1078-beca-4687-860b-dc475a6ec24a

**Approvals**

Approvals



ROHS	Conform
UL File Number Search	UL Website
Certificate no. (cULus)	E471884

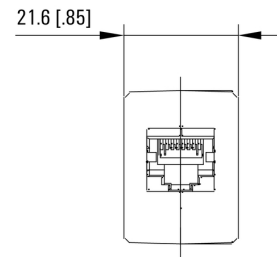
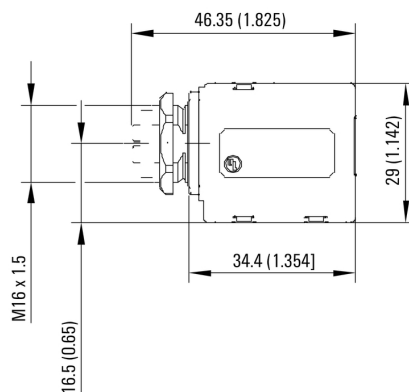
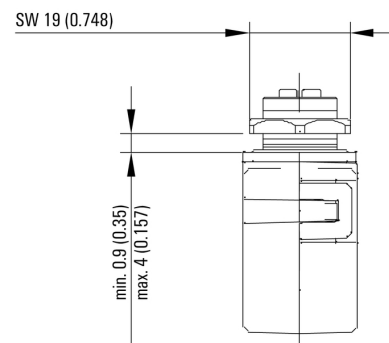
**Downloads**

Approval/Certificate/Document of Conformity	<a href="#">DUXR.E316369</a> <a href="#">PROFINET Manufacturer's Declaration</a>
Engineering Data	<a href="#">CAD data – STEP</a>
Product Change Notification	<a href="#">20200827 Technische Änderung zu M12-X-codeRJ45 Adapter</a> <a href="#">20200827 Technical change to M12 X-codeRJ45 adapter</a>
User Documentation	<a href="#">MAN IE GUIDE DE</a> <a href="#">MAN IE GUIDE EN</a> <a href="#">Manual</a>
Catalogues	<a href="#">Catalogues in PDF-format</a>
Brochures	<a href="#">FL FIELDWIRING EN</a> <a href="#">PI PROFINET CABLING EN</a> <a href="#">PI PROFINET CABLING EN</a>

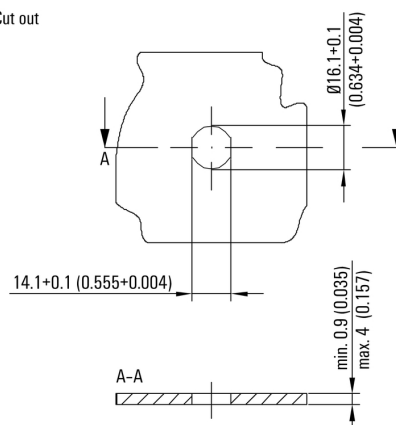
**IE-AD-M12XRJ45-180**

**Weidmüller Interface GmbH & Co. KG**  
 Klingenbergstraße 26  
 D-32758 Detmold  
 Germany

[www.weidmueller.com](http://www.weidmueller.com)

**Drawings**
**Dimensioned drawing**

**Dimensioned drawing**

**Dimensioned drawing**

**Installation cut-out**

Cut out



## IE-AD-M12XRJ45-180

Weidmüller Interface GmbH &amp; Co. KG

Klingenbergstraße 26

D-32758 Detmold

Germany

www.weidmueller.com

## Accessories

## Screwty® cable gland tool



## The ideal tool for any application

Screwty® is the ideal, all-purpose tool for tightening all common sensor and actuator cables. Even difficult-to-reach round plugs are accessible using the Screwty®. A simple turning movement tightens and loosens the connectors without the need for excessive force. The Screwty® is a unique and global solution since it fits with most cables and plugs from other vendors (over 90 %). The Screwty® consists of a handle with a conventional 1/4" adapter. Thus it can be used for all sizes: for M12 and M8 round plug-in connectors, and for M12F and M8F customisable plugs and sockets, as well as for all M23 plugs and sockets.

## General ordering data

Type	SCREWTY- M12 F	Version	Packaging
Order No.	<a href="#">1900020000</a>	Cable gland tool for M12 connectors	Cardboard box
GTIN (EAN)	4032248375851		
Qty.	1 pc(s).		
Type	SCREWTY SET	Version	Packaging
Order No.	<a href="#">1910000000</a>	Cable gland tool for M8, M12 lines and connectors	Cardboard box
GTIN (EAN)	4032248436842		
Qty.	1 pc(s).		

## Screwty® cable gland tool with torque function



## The ideal tool for any application

Screwty® is the ideal, all-purpose tool for tightening all common sensor and actuator cables. Even difficult-to-reach round plugs are accessible using the Screwty®. A simple turning movement tightens and loosens the connectors without the need for excessive force. The Screwty® is a unique and global solution since it fits with most cables and plugs from other vendors (over 90 %). The Screwty® consists of a handle with a conventional 1/4" adapter. Thus it can be used for all sizes: for M12 and M8 round plug-in connectors, and for M12F and M8F customisable plugs and sockets, as well as for all M23 plugs and sockets.

## General ordering data

Type	SCREWTY-M12 F-DM	Version	Packaging
Order No.	<a href="#">1900021000</a>	Cable gland tool for M12 connectors	Cardboard box
GTIN (EAN)	4032248436828		
Qty.	1 pc(s).		
Type	SCREWTY SET -DM	Version	Packaging
Order No.	<a href="#">1920000000</a>	Cable gland tool for M8, M12 lines and connectors	Cardboard box
GTIN (EAN)	4032248436859		
Qty.	1 pc(s).		

## IE-AD-M12XRJ45-180

**Weidmüller Interface GmbH & Co. KG**  
Klingenbergstraße 26  
D-32758 Detmold  
Germany

[www.weidmueller.com](http://www.weidmueller.com)

## Drawings

### Wiring

