

ACT20M-RTI-AO-S**Weidmüller Interface GmbH & Co. KG**

Klingenbergstraße 26

D-32758 Detmold

Germany

www.weidmueller.com**Product image****ACT20M: The slim solution**

- Safe and space-saving (6 mm) isolation and conversion
- Quick installation of the power supply unit using the CH20M mounting rail bus
- Easy configuration via DIP switch or FDT/DTM software
- Extensive approvals such as ATEX, IECEx, GL, DNV
- High interference resistance

General ordering data

Version	Temperature converter, With galvanic isolation, Input : Temperature, PT100, Output : I / U
Order No.	1375510000
Type	ACT20M-RTI-AO-S
GTIN (EAN)	4050118259667
Qty.	1 pc(s).

ACT20M-RTI-AO-S**Weidmüller Interface GmbH & Co. KG**

Klingenbergstraße 26

D-32758 Detmold

Germany

www.weidmueller.com

Technical data**Dimensions and weights**

Depth	114.3 mm	Depth (inches)	4.5 inch
Height	112.5 mm	Height (inches)	4.429 inch
Width	6.1 mm	Width (inches)	0.24 inch
Net weight	89 g		

Temperatures

Storage temperature	-40 °C...85 °C	Operating temperature	-25 °C...70 °C
Humidity at operating temperature	0...95 % (no condensation)	Humidity	40 °C / 95 % rel. humidity, no condensation

Probability of failure

MTBF	152 a
------	-------

Input

Influence of the sensor cable resistance	<0.002 Ω/Ω (@ 3/4-wire)	Line resistance in measuring circuit	≤ 50 Ω
Number of inputs	1	Sensor	PT100 (2-/3-/4- wire)
Temperature input range	Configurable, PT100: -200...+850 °C, min. measurement range 10°C (RTD)		

Output

Load impedance current	≤ 600 Ω	Number of outputs	1
Output current	configurable, 0...20 mA, 4...20 mA	Output signal limit	<4 mA (average), <60 mA (pulse current), low duty cycle
Output voltage, note	configurable, 0(2)...10 V, 0(1)...5 V	Type	active, connected control must be passive
Wire break detection	Yes, Configurable, 3.5 mA / 23 mA / none	load impedance voltage	≥ 10 kΩ

General data

Accuracy	absolute accuracy: <±0.05 % of the measurement range, Basic accuracy: <±0.1°C	
Configuration	DIP switch	
Delivery state	Setting parameters	Input
	Configuration	0 °C
	Setting parameters	Bandwidth
	Configuration	50 Hz
	Setting parameters	Output 1
	Configuration	0...20 mA
	Setting parameters	Output 2
	Configuration	0...20 mA
	Setting parameters	Sensor error detection
	Configuration	enabled
	Setting parameters	Step response time
	Configuration	< 30 ms
	Setting parameters	Noise suppression
	Configuration	enabled
Delivery state	Input: 0 °C // Bandwidth: 50 Hz // Output 1: 0...20 mA // Output 2: 0...20 mA // Sensor error detection: enabled // Step response time: < 30 ms // Noise suppression: enabled	
Galvanic isolation	3-way isolator	

Creation date July 25, 2024 7:15:20 PM CEST

ACT20M-RTI-AO-S**Weidmüller Interface GmbH & Co. KG**

Klingenbergstraße 26

D-32758 Detmold

Germany

www.weidmueller.com

Technical data

Included in delivery	Instruction sheet
Power consumption, max.	0.7 W
Power consumption, typ.	0.49 W
Protection degree	IP20
Rail	TS 35
Step response time	Configurable, ≤ 30 ms, <300 ms
Temperature coefficient	≤0.01 % of the measurement range/°C or 0.02 °C/°C
Voltage supply	24 V DC ±30 % at terminal or via CH20M rail bus

Insulation coordination

EMC standards	IEC 61326-1	Galvanic isolation	3-way isolator
Insulation voltage	2.5 kV _{eff} / 1 min.	Pollution severity	2
Rated voltage	300 V _{eff}	Surge voltage category	II

Data for Ex applications (ATEX)

Installation location	Device installed in safe area, zone 2	Marking	II 3 G Ex nA IIC T4 Gc
-----------------------	---------------------------------------	---------	------------------------

Connection data

Type of connection	Screw connection	Tightening torque, min.	0.4 Nm
Tightening torque, max.	0.6 Nm	Clamping range, rated connection	2.5 mm ²
Clamping range, min.	0.5 mm ²	Clamping range, max.	2.5 mm ²
Wire connection cross section AWG, min.	AWG 30	Wire connection cross section AWG, max.	AWG 14

EMC conformity and approvals

EMC standards	IEC 61326-1	Standards	IEC 61010-1
---------------	-------------	-----------	-------------

Classifications

ETIM 6.0	EC002919	ETIM 7.0	EC002919
ETIM 8.0	EC002919	ETIM 9.0	EC002919
ECLASS 9.0	27-21-01-29	ECLASS 9.1	27-21-01-29
ECLASS 10.0	27-21-01-29	ECLASS 11.0	27-21-01-29
ECLASS 12.0	27-21-01-29	ECLASS 13.0	27-21-01-29

Environmental Product Compliance

REACH SVHC	Lead 7439-92-1
SCIP	2f6dd957-421a-46db-a0c2-cf1609156924
RoHS Compliance Status	Compliant with exemption
RoHS Exemption (if applicable/known)	7a, 7cl

Important note

Product information	The ACT20M-RTI-AO-S configurable temperature transducer isolates and converts analogue signals. An analogue RTD input signal (Type Pt100) is linearly converted into an analogue output signal and galvanically isolated. The power supply is galvanically isolated from the input and output (3-way isolation) and this is done with direct wiring or over the Weidmüller rail bus.
---------------------	--

ACT20M-RTI-AO-S

Weidmüller Interface GmbH & Co. KG

Klingenbergstraße 26

D-32758 Detmold

Germany

www.weidmueller.com

Technical data

Approvals

Approvals



ROHS	Conform
UL File Number Search	UL Website
Certificate no. (cULus)	E337701

Downloads

Approval/Certificate/Document of Conformity	DNV-GL certificate FM certificate IECEXx certificate ATEX certificate Declaration of Conformity
Engineering Data	CAD data – STEP
Engineering Data	Zuken E3.S
Software	DIP switch configuration tool
User Documentation	instruction sheet
Catalogues	Catalogues in PDF-format
Brochures	

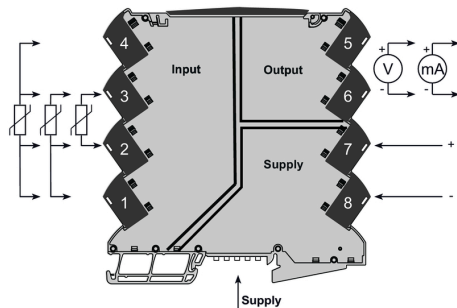
ACT20M-RTI-AO-S

Weidmüller Interface GmbH & Co. KG
Klingenbergstraße 26
D-32758 Detmold
Germany

www.weidmueller.com

Drawings

Connection diagram



Dimensional drawing

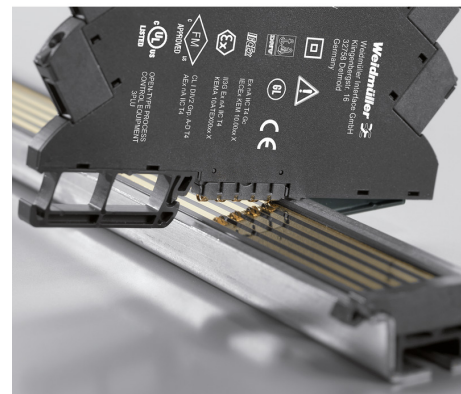


DIP switch setting

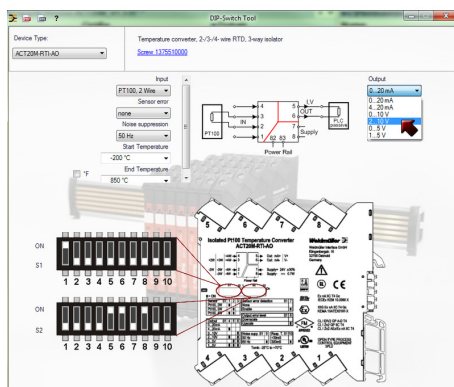
RTD sensor type	S1	Temperature range [°C]							
		PT100, 2-wire		PT100, 3-wire		PT100, 4-wire		PT100, 5-wire	
Output	S2	0-20 mA	0-10 V	0-5 V	1-5 V	0-20 mA	0-10 V	0-5 V	1-5 V
Sensor error detection	S3	disabled	enabled	disabled	enabled	disabled	enabled	disabled	enabled
Output error level	S4	diagnostic	diagnostic	diagnostic	diagnostic	diagnostic	diagnostic	diagnostic	diagnostic
Noise suppression	S5	50 Hz	50 Hz	50 Hz	50 Hz	50 Hz	50 Hz	50 Hz	50 Hz
Response time	S6	≤ 30 ms	≤ 30 ms	≤ 30 ms	≤ 30 ms	≤ 30 ms	≤ 30 ms	≤ 30 ms	≤ 30 ms

■ = ON

example for DIP switch setting
(with ACT20M tool software)



Additional power supply option via bus



example for DIP switch setting (with ACT20 tool)

ACT20M-RTI-AO-S**Weidmüller Interface GmbH & Co. KG**

Klingenbergstraße 26

D-32758 Detmold

Germany

www.weidmueller.com**Accessories****Blank**

MultiFit is the Weidmüller marker system used for other makes of terminals. Similar to the Weidmüller Dekafix, the markers of the MultiFit family are available ready-for-use with standard printing.

We recommend to carry out a test with sample markers on the terminals used when using MultiFit for the first time.

- One marker, suitable for different makes of terminals.
- Ready-to-use markers with standard printing
- Blank markers for printing with the PrintJet CONNECT or Plotter
- Delivery of individually printed markers according to customer CAE data or specifications
- One marking system for all applications

For custom printing: Please send us a file of our labeling software M-Print PRO or M-Print PRO Online (without installation) for your labeling specifications.

General ordering data

Type	MF 5/7.5 MC NE WS	Version
Order No.	1877680000	MultiFit, Terminal marker, 5 x 7.5 mm, Pitch in mm (P): 7.50 Adels
GTIN (EAN)	4032248468270	RKW, Phoenix, white
Qty.	320 pc(s).	

ACT20M-RTI-AO-S

Weidmüller Interface GmbH & Co. KG
 Klingenbergstraße 26
 D-32758 Detmold
 Germany

www.weidmueller.com

Accessories

CH20M BUS SET - Kit



The integrated rail bus for the modular electronics housing system

When supplying, connecting or distributing within modular applications, the rail bus can replace the tedious individual wiring process with a flexible and uninterrupted system-wide solution.

The system bus is securely integrated within the 35-mm standard mounting rail. The SMD-bus contact block can be reflow-soldered so that it can be completely automatically processed during the component assembly. The resistant, gold-plated contact surfaces ensure a permanent and reliable contact for all housing widths.

- **Unlimited scalability** The integrated connection solution covers all system widths: from the 6-mm slice to the 67-mm large-area housing.
- **Easy to service during installation** It's easy to replace a module, even in existing modules groups – without any influence on the neighbouring modules.
- **Universal integration** The uninterrupted system bus is securely integrated within the 35-mm standard mounting rail.
- **Maximum availability** Five fully-galvanized and partially gold-plated twin-arched contacts are used to establish a permanent contact to the rail bus. THR solder flanges ensure that the connection to the circuit board is stable.

General ordering data

Type	SET CH20M BUS 250MM TS ...	Version
Order No.	1335150000	OMNIMATE Housing - series CH20M, Length: 250 mm, Width: 25.1
GTIN (EAN)	4050118138382	mm
Qty.	1 pc(s).	
Type	SET CH20M BUS 250MM TS ...	Version
Order No.	1335140000	OMNIMATE Housing - series CH20M, Length: 250 mm, Width: 25.1
GTIN (EAN)	4050118138375	mm
Qty.	1 pc(s).	

ACT20M-RTI-AO-S**Weidmüller Interface GmbH & Co. KG**

Klingenbergstraße 26

D-32758 Detmold

Germany

www.weidmueller.com**Accessories****ACT20 (incl. DIN rail bus & powersupplies)**

Power supply adapter modules for separate supply and distribution of the supply voltage; for the ACT20 series/ MICROSERIES signal converters.

The 22.5/6.1 mm wide power-feed modules are mounted directly adjacent to the analogue signal converters. Then the 24 VDC supply voltage is optionally bridged via the CH20M (ACT20-series) rail bus or simply bridged over using the pluggable ZQV 4N (MICROSERIES) cross-connectors.

The ACT20-Feed-In-PRO-S can also detect faults coming from any of the devices mounted on the CH20 bus mounting profile.

In the event of an error or fault, the integrated status relay sends a common alarm to the external controller. In addition, two power supply units (as primary and backup supply) can be connected to the ACT20 Feed-In PRO-S.

Two feed-in modules mounted to the CH20 bus mounting profile guarantee a 100% redundant power supply.

Three LEDs are used to show the status of the power supply and error messages.

The ACT20M-Feed-In PRO can also be used in Ex zone2 / Division2 applications.

General ordering data

Type	ACT20-FEED-IN-PRO-S	Version
Order No.	8965500000	Supply module, Distributes supply voltage to rail bus, Optional
GTIN (EAN)	4032248785117	connection of backup supply
Qty.	1 pc(s).	