

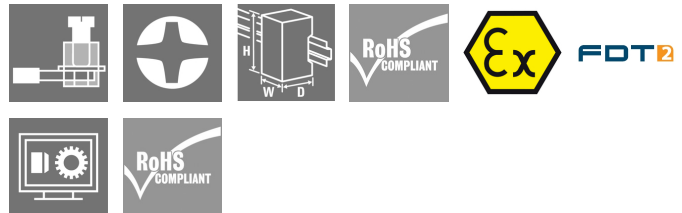
ACT20X-HUI-SAO-LP-S**Weidmüller Interface GmbH & Co. KG**

Klingenbergstraße 26

D-32758 Detmold

Germany

www.weidmueller.com

Product image**Do not use product for new developments**

The ACT 20X HUI-SAO-S/ SAO-LP universal measurement and signal isolating converters can be configured individually.

Temperature signals from PT100 sensors and thermocouples as well as analogue DC current and voltage signals can be recorded from Ex zone 0.

On the output side, optional current/voltage (SAO-S) or 4...20 mA current loop signals (SAO-LP / SAO-S) are provided for the safe zone.

The ACT20X-HUI-SAO-S also has a relay output for configuring its switching threshold.

An integrated alarm contact is available on this device for issuing an alert in the event of a malfunction. This makes troubleshooting easier and also increases system availability.

The power supply of the signal isolating converter is either done using the integrated power supply (SAO-S) or alternatively over the output-side current loop (SAO-LP). The rail mountable devices are designed with one channel, and are optionally available in widths of 12.5 mm (SAO-LP) or 22.5 mm (SAO-S).

General ordering data

Version	ACT20X, EX signal isolating converter, 1-channel version, Output-loop powered
Order No.	1318220000
Type	ACT20X-HUI-SAO-LP-S
GTIN (EAN)	4050118323955
Qty.	1 pc(s).
Delivery status	This article will no longer be available in the future.
Available until	2021-12-15

ACT20X-HUI-SAO-LP-S

Weidmüller Interface GmbH & Co. KG

Klingenbergstraße 26

D-32758 Detmold

Germany

www.weidmueller.com

Technical data

Dimensions and weights

Depth	113.6 mm	Depth (inches)	4.472 inch
Height	117.2 mm	Height (inches)	4.614 inch
Width	12.5 mm	Width (inches)	0.492 inch
Net weight	171 g		

Temperatures

Storage temperature	-20 °C...70 °C	Operating temperature	0 °C...60 °C
Humidity at operating temperature	0...95 % (no condensation)	Humidity	10...90 %, no condensation

Probability of failure

SIL in compliance with IEC 61508	2
----------------------------------	---

Assembling

Mounting position	horizontal or vertical	Rail	TS 35
Type of mounting	DIN rail		

Input EX

Input current	configurable, ± 25 mA, 0...20 mA, 4...20mA	Input resistance	0...12 k Ω
Input resistance, current	70 Ω	Input resistance, voltage	> 10 M Ω @ 600 mV, 2 M Ω @ 28 V
Input voltage	configurable, ± 12 V DC (min. measurement range 1 V), ± 28 V DC (min. measurement range 2 V), ± 600 mV DC (min. measurement range 50 mV), ± 150 mV DC (min. measurement range 15 mV)	Line resistance in measuring circuit	≤ 50 Ω
Potentiometer		Sensor	2-/3-/4-wire, RTD: PT10, PT20, PT50, PT100, PT250, PT300, PT400, PT500, PT1000, Ni50, Ni100, Ni120, Ni1000, Thermocouples: B, E, J, K, N, R, S, T ; in compliance with IEC 60584-1 and L, U in compliance with DIN43710, Potentiometer, Resistance: 0 - 12 k Ω
Sensor supply	1.2...500 k Ω 28...16.5 V DC / 0...20 mA	Temperature input range	Adjustable from -200...+800°C
Type	intrinsically safe circuit		

Output

Cut-off frequency (-3 dB)	100 Hz	Load impedance current	≤ 700 Ω
Output current	4...20 mA (max. 23 mA)	Output signal limit	3.8...20.5 mA / 0...20.5 mA (dependent on range)
Type	Output-loop powered		

ACT20X-HUI-SAO-LP-S

Weidmüller Interface GmbH & Co. KG

Klingenbergstraße 26

D-32758 Detmold

Germany

www.weidmueller.com

Technical data

General specifications

Accuracy	<0.1 % of end value	Configuration	With FDT/DTM software, Requires configuration adapter 8978580000 CBX200 USB
Humidity	10...90 %, no condensation	Power consumption	≤ 3.5 W
Protection degree	IP20	Step response time	250 ms (10...90%)
Temperature coefficient	<0.02 °C of measuring range / °C	Type of connection	Screw connection
Voltage supply	via output current loop, 11...28 V DC (loop powered)		

Insulation coordination

Impulse withstand voltage	4 kV (1.2/50 µs)	Insulation voltage	3.51 kV between input and output
Pollution severity	2	Rated voltage	300 V _{eff}
Standards	DIN EN 61326-1, IEC 61010-1, IEC 61010-2-030, IEC 60079-0, IEC 60079-11, IEC 60079-15, IEC 60079-26	Surge voltage category	III

Data for Ex applications (ATEX)

Current I ₀	88.2 mA	Installation location	Device installed in safe area, zone 2
Marking	II 3 G Ex nA IIC T4 Gc, I (M1) [Ex ia Ma] I, II (1) D [Ex ia Da] IIIC	Power P ₀	129 mW
Voltage U ₀	5.88 V DC		

Safety-related basic specifications

Safety category	SIL 2
-----------------	-------

Connection data

Type of connection	Screw connection	Tightening torque, min.	0.4 Nm
Tightening torque, max.	0.6 Nm	Clamping range, rated connection	2.5 mm ²
Clamping range, min.	0.25 mm ²	Clamping range, max.	2.5 mm ²
Wire connection cross section AWG, min.	AWG 26	Wire connection cross section AWG, max.	AWG 12

Guarantee

Time interval	3 years
---------------	---------

Classifications

ETIM 6.0	EC002653	ETIM 7.0	EC002653
ETIM 8.0	EC002653	ETIM 9.0	EC002653
ECLASS 9.0	27-21-01-20	ECLASS 9.1	27-21-01-20
ECLASS 10.0	27-21-01-20	ECLASS 11.0	27-21-01-20
ECLASS 12.0	27-21-01-20	ECLASS 13.0	27-21-01-20

Creation date June 4, 2024 12:43:06 PM CEST

ACT20X-HUI-SAO-LP-S

Weidmüller Interface GmbH & Co. KG
Klingenbergstraße 26
D-32758 Detmold
Germany

www.weidmueller.com

Technical data

Tender specification sheets

Long specification

Ex universal measurement isolating transformer for RTD-/ TC temperature and DC-current/ voltage signals, output-loop powered 1-channel 4...20 mA output-loop powered measurement isolating transformer in 12.5 mm width for recording, isolating and transmitting RTD- / TC sensors, resistors, potentiometers and DC current signals and voltages from Ex zones 0,1,2 to the safe zone.
The component can be configured using standard FDT/DTM software.
Add-on housing for TS35 rail mounting
Dimensions: L/W/H 119.2/ 12.5/ 113.6
Screw connection/
Nominal cross-section 2.5 mm²
Protection degree: IP 20
Input RTD: PT200, PT1000, Ni120, Cu100
Resistance 0...15 kOhm / Potentiometer 1.2...500 kOhm
TC-Type: B, E, J, K, L, N, R, S, T,U
+/- 25 mA configurable
+/- 28 V configurable
Output 4...20 mA current loop
Load < 700 Ohm
Accuracy < 0,1 % v.E
Auxiliary power 11...28 VDC / current loop
Power loss approx. 1.5 W
Ambient temperature range 0 °C...+60 °C

Secure isolation
EN 50178, 2-way
30 VDC to 4kV
Working voltage 300 V
AC/DC at overvoltage category II and pollution degree 2

Short specification

Ex universal measurement isolating transformer for RTD-/ TC temperature and DC-current/ voltage signals, output-loop powered 1-channel 4...20 mA-loop-powered measurement isolating trans-

ACT20X-HUI-SAO-LP-S

Weidmüller Interface GmbH & Co. KG

Klingenbergstraße 26

D-32758 Detmold

Germany

www.weidmueller.com

Technical data

Environmental Product Compliance

REACH SVHC	Lead 7439-92-1
SCIP	2f6dd957-421a-46db-a0c2-cf1609156924

Approvals

Approvals



Approvals	CULUS; EAC; IECEXKEM; ATEX
ROHS	Conform

Downloads

Approval/Certificate/Document of Conformity	Certification ATEX Certification IECEX Application notes – UL Certification Declaration of Conformity
Engineering Data	CAD data – STEP
Software	WI-Manager, DTM-Library for online installation Release notes for Weidmueller FDT-DTM Software version
User Documentation	Instruction sheet 20210120 Security Advisory - WI-Manager affected by MundM Software fdtCONTAINER vulnerability
Catalogues	Catalogues in PDF-format
Brochures	

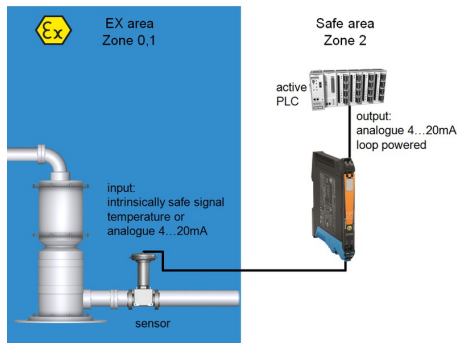
ACT20X-HUI-SAO-LP-S

Weidmüller Interface GmbH & Co. KG
 Klingenbergstraße 26
 D-32758 Detmold
 Germany

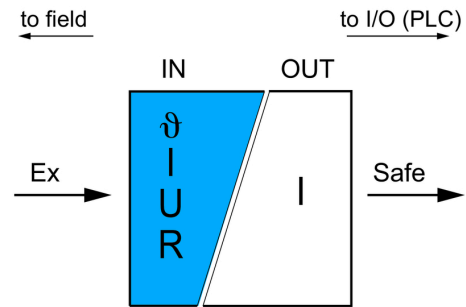
www.weidmueller.com

Drawings

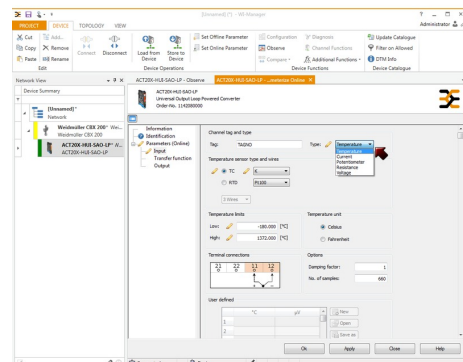
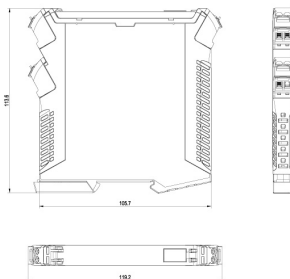
Application



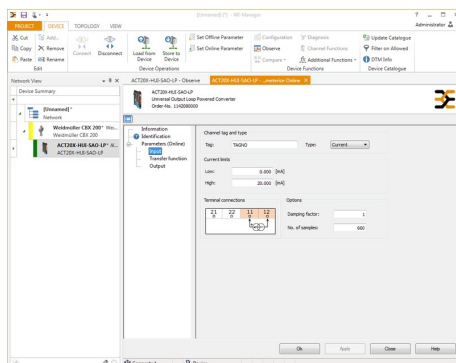
Block diagram



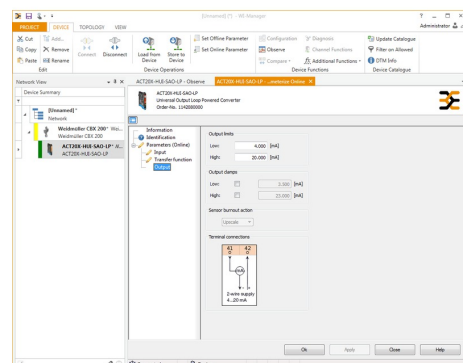
Dimensioned drawing



screenshot of temperature input configuration with FDT2 / DTM software



screenshot of current input configuration with FDT2 / DTM software



screenshot of output configuration with FDT2 / DTM software

ACT20X-HUI-SAO-LP-S**Weidmüller Interface GmbH & Co. KG**

Klingenbergstraße 26

D-32758 Detmold

Germany

www.weidmueller.com**Accessories****Blank**

ESG is the tried-and-tested marker in MultiCard format for use on many well-known electrical devices. The result is high-quality device marking with a high-contrast appearance.

Various types are available for devices from manufacturers like Siemens, ABB, Beckhoff etc.

Advantages at a glance:

- Tags for universal usage, self-adhesive or clip-on tags, depending on type
- For aligned equipment, e.g. circuit breakers, we supply ESG markers for clipping onto tag rails
- Individual laser-quality printing according to specifications

For custom printing: Please send us a file of our labeling software M-Print PRO or M-Print PRO Online (without installation) for your labeling specifications.

General ordering data

Type	ESG 6.6/11 BHZ 5.00/02	Version
Order No.	1082490000	ESG, Device markers x 11 mm, PA 66, Colour: white
GTIN (EAN)	4032248845330	
Qty.	200 pc(s).	

ACT20X-HUI-SAO-LP-S

Weidmüller Interface GmbH & Co. KG
Klingenbergstraße 26
D-32758 Detmold
Germany

www.weidmueller.com

Accessories**Blank**

ESG is the tried-and-tested marker in MultiCard format for use on many well-known electrical devices. The result is high-quality device marking with a high-contrast appearance.

Various types are available for devices from manufacturers like Siemens, ABB, Beckhoff etc.

Advantages at a glance:

- Tags for universal usage, self-adhesive or clip-on tags, depending on type
- For aligned equipment, e.g. circuit breakers, we supply ESG markers for clipping onto tag rails
- Individual laser-quality printing according to specifications

For custom printing: Please send us a file of our labeling software M-Print PRO or M-Print PRO Online (without installation) for your labeling specifications.

General ordering data

Type	ESG 8/13.5/43.3 SAI AU	Version
Order No.	1912130000	ESG, Device markers x 13.5 mm, PA 66, Colour: Transparent
GTIN (EAN)	4032248541164	
Qty.	5 pc(s).	

Configuration interfaces**General ordering data**

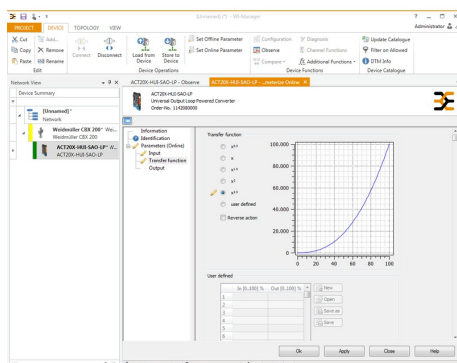
Type	CBX200 USB
Order No.	8978580000
GTIN (EAN)	4032248813759
Qty.	1 pc(s).

ACT20X-HUI-SAO-LP-S

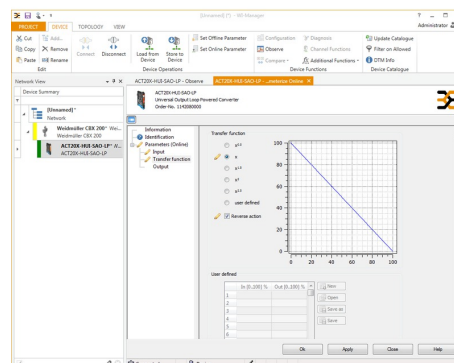
Weidmüller Interface GmbH & Co. KG
 Klingenbergstraße 26
 D-32758 Detmold
 Germany

www.weidmueller.com

Drawings



screenshot of transfer function configuration with FDT2 / DTM software



screenshot of transfer function configuration with FDT2 / DTM software

Connection diagram

