

**IE-AD-BHS-V14M-RJA****Weidmüller Interface GmbH & Co. KG**

Klingenbergstraße 26

D-32758 Detmold

Germany

[www.weidmueller.com](http://www.weidmueller.com)

PushPull plug-in connector according to IEC  
61076-3-117 ver.14 (PROFINET), metal, empty housing

**General ordering data**

Version	Adapter
Order No.	<a href="#">1302000000</a>
Type	IE-AD-BHS-V14M-RJA
GTIN (EAN)	4050118099638
Qty.	1 pc(s).

**IE-AD-BHS-V14M-RJA****Weidmüller Interface GmbH & Co. KG**

Klingenbergstraße 26

D-32758 Detmold

Germany

[www.weidmueller.com](http://www.weidmueller.com)**Technical data****Dimensions and weights**

Depth	25.7 mm	Depth (inches)	1.012 inch
Height	42 mm	Height (inches)	1.654 inch
Width	24.2 mm	Width (inches)	0.953 inch
Net weight	61.533 g		

**Temperatures**

Operating temperature	-40 °C...70 °C
-----------------------	----------------

**General data**

Colour	Miscellaneous	Housing main material	Zinc diecast
Protection degree	IP67	Type of mounting	2 screws, M3 (not included)

**General standards**

Certificate no. (cULus)	E316369
-------------------------	---------

**Classifications**

ETIM 6.0	EC001121	ETIM 7.0	EC001121
ETIM 8.0	EC001121	ETIM 9.0	EC001121
ECLASS 9.0	27-44-03-90	ECLASS 9.1	27-44-03-90
ECLASS 10.0	27-44-03-90	ECLASS 11.0	27-44-03-90
ECLASS 12.0	27-44-03-90	ECLASS 13.0	27-44-03-90

**Approvals**

Approvals



ROHS	Conform
UL File Number Search	UL Website
Certificate no. (cULus)	E316369

**Downloads**

Approval/Certificate/Document of Conformity	<a href="#">PROFINET Manufacturer's Declaration</a>
Engineering Data	<a href="#">CAD data – STEP</a>
User Documentation	<a href="#">MAN IE GUIDE DE</a> <a href="#">MAN IE GUIDE EN</a> <a href="#">Designation key / Type key</a>
Catalogues	<a href="#">Catalogues in PDF-format</a>
Brochures	<a href="#">FL FIELDWIRING EN</a> <a href="#">PI PROFINET CABLING EN</a> <a href="#">PI PROFINET CABLING EN</a>

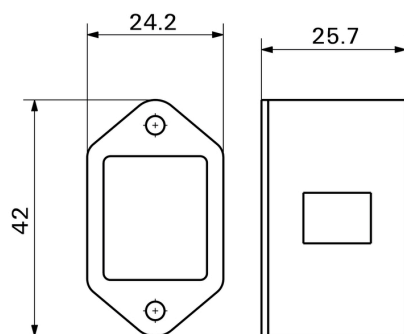
## IE-AD-BHS-V14M-RJA

**Weidmüller Interface GmbH & Co. KG**  
Klingenbergstraße 26  
D-32758 Detmold  
Germany

[www.weidmueller.com](http://www.weidmueller.com)

## Drawings

### Installation cut-out



### Dimensioned drawing

