

PTSI 4/LD 36V AC/DC**Weidmüller Interface GmbH & Co. KG**

Klingenbergstraße 26

D-32758 Detmold

Germany

www.weidmueller.com

Power distribution using uncut cables with cross-sections from 1.5 to 6 mm².

Power supply / T-branch tap via PUSH IN connection (0.5 to 10 mm²) and/or plug-in connection (0.5 to 4 mm²).

Coloured markings provide clear assignment of wires.

- Power supply
- Power distribution
- Power branching

General ordering data

Version	Field Power® plug-in connector, Fuse, IP20, Polyamide, PUSH IN, Number of poles : 5
Order No.	1252210000
Type	PTSI 4/LD 36V AC/DC
GTIN (EAN)	4050118044331
Qty.	1 pc(s).

PTSI 4/LD 36V AC/DC

Weidmüller Interface GmbH & Co. KG

Klingenbergstraße 26

D-32758 Detmold

Germany

www.weidmueller.com

Technical data

Dimensions and weights

Depth	55 mm	Depth (inches)	2.165 inch
Height	85 mm	Height (inches)	3.346 inch
Width	57 mm	Width (inches)	2.244 inch
Net weight	92 g		

Temperatures

Storage temperature	-40 °C...85 °C	Operating temperature	-40 °C...55 °C
---------------------	----------------	-----------------------	----------------

Clamping capacity, PUSH IN connection

Blade size, PUSH IN connection	3.0 x 0.5 mm	Clamping range, max. PUSH IN connection	4 mm ²
Clamping range, min. PUSH IN connection	0.5 mm ²	Cross-section for connected wire PUSH IN connection, solid, min.	0.5 mm ²
Cross-section for connected wire, PUSH IN connection, solid, max.	4 mm ²	Cross-section for connected wire, flexible with wire-end ferrules, 12mm with plastic collar, DIN 46228/1, PUSH IN connection, max.	4 mm ²
Cross-section for connected wire, flexible with wire-end ferrules, 12mm with plastic collar, DIN 46228/1, PUSH IN connection, min.	0.5 mm ²	Cross-section for connected wire, flexible with wire-end ferrules, 12mm with plastic collar, DIN 46228/4, PUSH IN connection, max.	4 mm ²
Cross-section for connected wire, flexible with wire-end ferrules, 12mm with plastic collar, DIN 46228/4, PUSH IN connection, min.	0.5 mm ²	Cross-section for connected wire, flexible with wire-end ferrules, 8mm with plastic collar, DIN 46228/1, PUSH IN connection, max.	4 mm ²
Cross-section for connected wire, flexible with wire-end ferrules, 8mm with plastic collar, DIN 46228/1, PUSH IN connection, min.	0.5 mm ²	Cross-section for connected wire, flexible with wire-end ferrules, 8mm with plastic collar, DIN 46228/4, PUSH IN connection, max.	4 mm ²
Cross-section for connected wire, flexible with wire-end ferrules, 8mm with plastic collar, DIN 46228/4, PUSH IN connection, min.	0.5 mm ²	Cross-section for connected wire, flexible, PUSH IN connection, max.	4 mm ²
Cross-section for connected wire, flexible, PUSH IN connection, min.	0.5 mm ²	Finely-stranded flexible, max. PUSH IN connection	4 mm ²
Finely-stranded flexible, min. PUSH IN connection	0.5 mm ²	Stripping length, PUSH IN connection	12 mm

PTSI 4/LD 36V AC/DC

Weidmüller Interface GmbH & Co. KG

Klingenbergstraße 26

D-32758 Detmold

Germany

www.weidmueller.com

Technical data

Clamping capacity

Connection data - plug-in connector	Wire connection method		PUSH IN
	Blade size of operating tool		3.0 x 0.5 mm
	Stripping length		12 mm
	Number of poles		5
	Conductor connection cross-section, solid, max.		4 mm ²
	Conductor connection cross-section, solid, min.		0.5 mm ²
	Conductor connection cross-section, stranded, max.		4 mm ²
	Conductor connection cross-section, stranded, min.		0.5 mm ²
	Conductor connection cross-section, finely stranded, max.		4 mm ²
	Conductor connection cross-section, finely stranded, min.		0.5 mm ²
	Conductor connection cross-section, finest stranded, max.		4 mm ²
	Conductor connection cross-section, finest stranded, min.		0.5 mm ²
	Conductor connection cross-section with wire end ferrule	Type of wire end ferrule	12 mm with plastic collar
		Standard	DIN 46228/1
		Cross-section, min.	0.5 mm ²
		Cross-section, max.	4 mm ²
		Type of wire end ferrule	12 mm with plastic collar
		Standard	DIN 46228/4
		Cross-section, min.	0.5 mm ²
		Cross-section, max.	4 mm ²
		Type of wire end ferrule	8 mm with plastic collar
		Standard	DIN 46228/1
		Cross-section, min.	0.5 mm ²
		Cross-section, max.	4 mm ²
		Type of wire end ferrule	8 mm with plastic collar
		Standard	DIN 46228/4
		Cross-section, min.	0.5 mm ²
		Cross-section, max.	4 mm ²
		Type of wire end ferrule	Twin wire-end ferrules
		Cross-section, min.	0.5 mm ²
		Cross-section, max.	4 mm ²

General data

Insulating material	Polyamide	Silicone	No
Colour	black	Protection degree	IP20
UL 94 flammability rating	V-0	Type of mounting	Plugged
Function	Fuse	Can be coded	Yes, Coded on PE
Test point	2 mm	Number of poles	5
Number of connections / pole	1	Wire connection method	PUSH IN
Cartridge fuse	6.3 x 32 mm (1/4 x 1 1/4")	Conductor outlet direction	90°
Failure indicator	Red LED		

PTSI 4/LD 36V AC/DC

Weidmüller Interface GmbH & Co. KG

Klingenbergstraße 26

D-32758 Detmold

Germany

www.weidmueller.com

Technical data

Rated data acc. to IEC

Rated data acc. to IEC for fuse plug	Voltage type	AC, DC
	Standard	IEC 61984, IEC 60947-7-3
	Rated voltage	36 V
	Rated impulse withstand voltage	6 kV
	Rated current	12 A

Rated data acc. to UL

Rated data acc. to UL for fuse plug

Classifications

ETIM 6.0	EC002943	ETIM 7.0	EC002943
ETIM 8.0	EC002943	ETIM 9.0	EC002943
ECLASS 9.0	27-44-02-92	ECLASS 9.1	27-44-03-90
ECLASS 10.0	27-44-02-92	ECLASS 11.0	27-44-02-92
ECLASS 12.0	27-44-02-92	ECLASS 13.0	27-44-02-92

Approvals

Approvals



ROHS	Conform
UL File Number Search	UL Website
Certificate No. (cURus)	E60693

Downloads

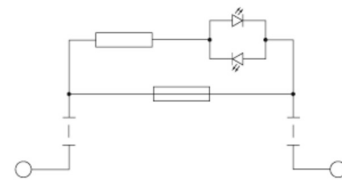
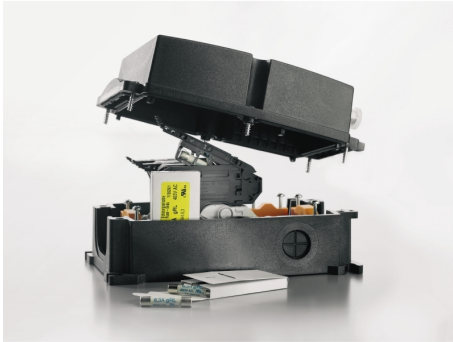
Approval/Certificate/Document of Conformity	UL Certificate FieldPower® terminals and plug-in connectors Manufacturer's Declaration FieldPower® plug-in connectors and HQ adapters
Engineering Data	CAD data – STEP
User Documentation	Datasheet FieldPower® Box Fuse
Catalogues	Catalogues in PDF-format

PTSI 4/LD 36V AC/DC

Weidmüller Interface GmbH & Co. KG
Klingenbergstraße 26
D-32758 Detmold
Germany

www.weidmueller.com

Drawings



PTSI 4/LD 36V AC/DC

Weidmüller Interface GmbH & Co. KG

Klingenbergstraße 26

D-32758 Detmold

Germany

www.weidmueller.com

Accessories

Blank



WS markers are the perfect match for the W-series connectors. Thanks to their system compatibility, the WS tags can also be used with the I-series and the Z-series. The large marking surfaces do not only permit long character strings but also multi-line text. WS markers are ideal for labels with long, customised character strings. Thanks to the proven MultiCard format, printing with PrintJet CONNECT oder/or Plotter is possible.

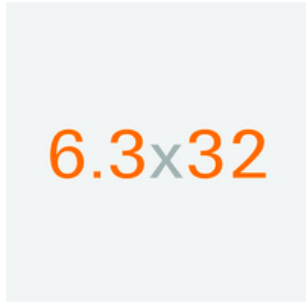
- Can be fitted in strips or individually
- Markers in proven MultiCard format

For custom printing: Please send us a file of our labeling software M-Print PRO or M-Print PRO Online (without installation) for your labeling specifications.

General ordering data

Type	WS 12/6 MC NE WS	Version
Order No.	1609900000	WS, Terminal marker, 12 x 6 mm, Pitch in mm (P): 6.00 Weidmueller,
GTIN (EAN)	4008190203467	Allen-Bradley, white
Qty.	600 pc(s).	

6.3x32



For protection against overcurrent, we offer cartridge fuse with dimensions 6.3x32 mm in sizes from 500 mA to 12.5 A.

General ordering data

Type	GZ 1.0A/F	Version
Order No.	1460590000	Miniature fuse, quick-acting, 1 A, G-Si. 6.3 x 32
GTIN (EAN)	4050118266634	
Qty.	10 pc(s).	
Type	GZ 0.5A/F	Version
Order No.	1460580000	Miniature fuse, quick-acting, 0.5 A, G-Si. 6.3 x 32
GTIN (EAN)	4050118266603	
Qty.	10 pc(s).	
Type	GZ 10.0A/F	Version
Order No.	1460640000	Miniature fuse, quick-acting, 10 A, G-Si. 6.3 x 32
GTIN (EAN)	4050118266801	
Qty.	10 pc(s).	
Type	GZ 3.0A/F	Version
Order No.	1460610000	Miniature fuse, quick-acting, 3 A, G-Si. 6.3 x 32
GTIN (EAN)	4050118266702	
Qty.	10 pc(s).	

PTSI 4/LD 36V AC/DC

Weidmüller Interface GmbH & Co. KG

Klingenbergstraße 26

D-32758 Detmold

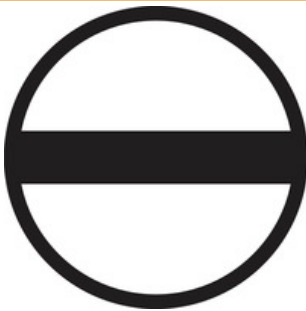
Germany

www.weidmueller.com

Accessories

Type	GZ 2.0A/F	Version
Order No.	1460600000	Miniature fuse, quick-acting, 2 A, G-Si. 6.3 x 32
GTIN (EAN)	4050118266719	
Qty.	10 pc(s).	
Type	GZ 12.5A/F	Version
Order No.	1460650000	Miniature fuse, quick-acting, 12.5 A, G-Si. 6.3 x 32
GTIN (EAN)	4050118266627	
Qty.	10 pc(s).	
Type	GZ 5.0A/F	Version
Order No.	1460620000	Miniature fuse, quick-acting, 5 A, G-Si. 6.3 x 32
GTIN (EAN)	4050118266610	
Qty.	10 pc(s).	
Type	GZ 7.0A/F	Version
Order No.	1460630000	Miniature fuse, quick-acting, 7 A, G-Si. 6.3 x 32
GTIN (EAN)	4050118266726	
Qty.	10 pc(s).	

Slotted screwdriver



Slotted screwdriver with rounded blade SD DIN 5265, ISO 2380/2, output to DIN 5264, ISO 2380/1. ChromTop tip, SoftFinish grip

General ordering data

Type	SDS 0.5X3.0X80	Version
Order No.	2749330000	Screwdriver, Blade width (B): 3 mm, Blade length: 80 mm, Blade thickness (A): 0.5 mm
GTIN (EAN)	4050118895551	
Qty.	1 pc(s).	

Tools

Sheathing stripper for PVC cables



General ordering data

Type	AM 16	Version
Order No.	9204190000	Tools, Sheathing strippers
GTIN (EAN)	4032248608133	
Qty.	1 pc(s).	

Creation date June 4, 2024 6:16:23 AM CEST

Catalogue status 01.06.2024 / We reserve the right to make technical changes.

PTSI 4/LD 36V AC/DC**Weidmüller Interface GmbH & Co. KG**

Klingenbergstraße 26

D-32758 Detmold

Germany

www.weidmueller.com**Accessories**

Type	AM 25	Version
Order No.	9001540000	Tools, Sheathing strippers
GTIN (EAN)	4008190138271	
Qty.	1 pc(s).	