

IE-C5DS4UG0005MBSMCS-E**Weidmüller Interface GmbH & Co. KG**

Klingenbergstraße 26

D-32758 Detmold

Germany

www.weidmueller.com

Assembled IE cables, PROFINET, Cat. 5, PUR, green

General ordering data

| | |
|------------|---|
| Version | System cable, M12 D-code – flange, M12 D-code – pin straight, Cat.5 (ISO/IEC 11801) / Cat.5e (TIA T568-B), PUR, 0.5 m |
| Order No. | 1244130005 |
| Type | IE-C5DS4UG0005MBSMCS-E |
| GTIN (EAN) | 4050118045192 |
| Qty. | 1 pc(s). |

Creation date July 25, 2024 2:23:38 AM CEST

Catalogue status 13.07.2024 / We reserve the right to make technical changes.

IE-C5DS4UG0005MBSMCS-E**Weidmüller Interface GmbH & Co. KG**

Klingenbergstraße 26

D-32758 Detmold

Germany

www.weidmueller.com

Technical data**Dimensions and weights**

| | | | |
|------------|-------|-----------------|-------------|
| Length | 0.5 m | Length (inches) | 19.685 inch |
| Net weight | 59 g | | |

Temperatures

| | | | |
|--------------------------|----------------|-----------------------|----------------|
| Storage temperature | -50 °C...70 °C | Operating temperature | -40 °C...70 °C |
| Installation temperature | -20 °C...60 °C | | |

Cable structure

| | | | |
|------------------|-----------------------------------|--------------------------|---------------------|
| Cross-section | 4*AWG 22/7 - 0.32 mm ² | Insulation cross-section | 1.5 mm |
| Material sheath | PUR | Sheath diameter, max. | 6.7 mm |
| Sheathing colour | green (RAL 6018) | Shielding | 360° shield contact |

Electrical properties of cable

| | |
|----------|--|
| Category | Cat.5 (ISO/IEC 11801) / Cat.5e (TIA T568-B) |
|----------|--|

Mechanical and material properties of cable

| | | | |
|---------------------------------|---|--------------------------------|--------------------|
| Halogen | halogen-free, according to IEC 60754-2 | Min. bending radius, once only | 5 x cable diameter |
| Min. bending radius, repetitive | 15 x cable diameter | Resistance to spread of flame | Yes |

Plug, left

| | |
|-----------|---|
| Plug left | M12, D-coded, IP67, fe- male contact, straight, flange, Plastic, shielded |
|-----------|---|

Plug, right

| | |
|------------|---|
| Plug right | M12, D-coded, IP67, male contact, straight, plug, Plastic, shielded |
|------------|---|

Classifications

| | | | |
|-------------|-------------|-------------|-------------|
| ETIM 6.0 | EC002599 | ETIM 7.0 | EC002599 |
| ETIM 8.0 | EC002599 | ETIM 9.0 | EC002599 |
| ECLASS 9.0 | 27-06-03-08 | ECLASS 9.1 | 27-06-03-08 |
| ECLASS 10.0 | 27-06-03-08 | ECLASS 11.0 | 27-06-03-08 |
| ECLASS 12.0 | 27-06-03-08 | ECLASS 13.0 | 27-06-03-08 |

Environmental Product Compliance

| | |
|--------------------------------------|--------------------------------------|
| REACH SVHC | Lead 7439-92-1 |
| SCIP | 67cf1078-beca-4687-860b-dc475a6ec24a |
| RoHS Compliance Status | Compliant with exemption |
| RoHS Exemption (if applicable/known) | 6c |

Approvals

| | |
|------|---------|
| ROHS | Conform |
|------|---------|

Creation date July 25, 2024 2:23:38 AM CEST

Catalogue status 13.07.2024 / We reserve the right to make technical changes.

IE-C5DS4UG0005MBSMCS-E

Weidmüller Interface GmbH & Co. KG
Klingenbergstraße 26
D-32758 Detmold
Germany

www.weidmueller.com

Technical data

Downloads

| | |
|--|---|
| Approval/Certificate/Document of Con- formity | PROFINET Manufacturer's Declaration |
| Engineering Data | CAD data – STEP |
| User Documentation | MAN IE GUIDE DE MAN IE GUIDE EN |
| Catalogues | Catalogues in PDF-format |
| Brochures | FL FIELDWIRING EN PI PROFINET CABLING EN PI PROFINET CABLING EN |

IE-C5DS4UG0005MBSMCS-E**Weidmüller Interface GmbH & Co. KG**

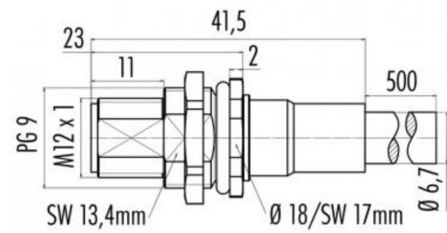
Klingenbergstraße 26

D-32758 Detmold

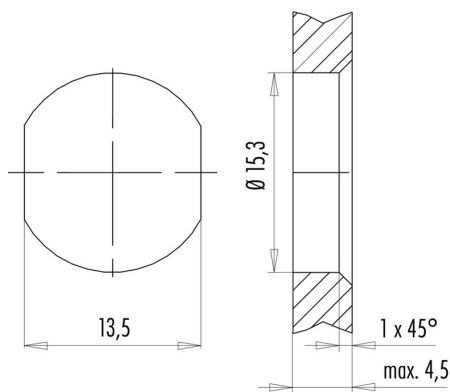
Germany

www.weidmueller.com**Drawings****Wiring diagram**

| M12 | | M12 |
|-----|--------|-----|
| 1 | yellow | 1 |
| 2 | white | 2 |
| 3 | orange | 3 |
| 4 | blue | 4 |

Dimensioned drawing

Hexagon nut enclosed loosely

Dimensioned drawing

with through hole

IE-C5DS4UG0005MBSMCS-E

Weidmüller Interface GmbH & Co. KG

Klingenbergstraße 26

D-32758 Detmold

Germany

www.weidmueller.com

Accessories

Screwty® cable gland tool



The ideal tool for any application

Screwty® is the ideal, all-purpose tool for tightening all common sensor and actuator cables. Even difficult-to-reach round plugs are accessible using the Screwty®. A simple turning movement tightens and loosens the connectors without the need for excessive force. The Screwty® is a unique and global solution since it fits with most cables and plugs from other vendors (over 90 %). The Screwty® consists of a handle with a conventional 1/4" adapter. Thus it can be used for all sizes: for M12 and M8 round plug-in connectors, and for M12F and M8F customisable plugs and sockets, as well as for all M23 plugs and sockets.

General ordering data

| Type | SCREWTY SET | Version | Packaging |
|------------|----------------------------|---|---------------|
| Order No. | 1910000000 | Cable gland tool for M8, M12 lines and connectors | Cardboard box |
| GTIN (EAN) | 4032248436842 | | |
| Qty. | 1 pc(s). | | |
| Type | SCREWTY- M12 | Version | Packaging |
| Order No. | 1900000000 | Cable gland tool for moulded M12 lines | Cardboard box |
| GTIN (EAN) | 4032248375868 | | |
| Qty. | 1 pc(s). | | |

Screwty® cable gland tool with torque function



The ideal tool for any application

Screwty® is the ideal, all-purpose tool for tightening all common sensor and actuator cables. Even difficult-to-reach round plugs are accessible using the Screwty®. A simple turning movement tightens and loosens the connectors without the need for excessive force. The Screwty® is a unique and global solution since it fits with most cables and plugs from other vendors (over 90 %). The Screwty® consists of a handle with a conventional 1/4" adapter. Thus it can be used for all sizes: for M12 and M8 round plug-in connectors, and for M12F and M8F customisable plugs and sockets, as well as for all M23 plugs and sockets.

General ordering data

| Type | SCREWTY SET -DM | Version | Packaging |
|------------|----------------------------|---|---------------|
| Order No. | 1920000000 | Cable gland tool for M8, M12 lines and connectors | Cardboard box |
| GTIN (EAN) | 4032248436859 | | |
| Qty. | 1 pc(s). | | |
| Type | SCREWTY-M12-DM | Version | Packaging |
| Order No. | 1900001000 | Cable gland tool for moulded M12 lines | Cardboard box |
| GTIN (EAN) | 4032248436408 | | |
| Qty. | 1 pc(s). | | |

IE-C5DS4UG0005MBSMCS-E**Weidmüller Interface GmbH & Co. KG**

Klingenbergstraße 26

D-32758 Detmold

Germany

www.weidmueller.com**Accessories****Blank**

TM-I is an acknowledged and accredited marker type for traffic engineering applications. There are various different tag lengths available for individual labelling with long character strings. Easy handling of separation and installation thanks to the project marker field. Pre-attachment of sleeves and retrofitting of tags offer excellent versatility

The special contour of TM-I allows easy assembly and secures firm positioning. They are compatible with a number of commercially available sleeves. Thanks to the MultiCard format, the tags can be printed quickly and conveniently with the PrintJet CONNECT, plotter or the STI pen.

- Easy handling of separation and installation thanks to the project marker field.
- Acknowledged and accredited marker for traffic engineering applications
- Pre-attachment of sleeves and retrofitting of tags offer excellent versatility
- Not suited for labelling with P-Ink or STI pen in connection with CLI T sleeves

For custom printing: Please send us a file of our labeling software M-Print PRO or M-Print PRO Online (without installation) for your labeling specifications.

General ordering data

| | | |
|------------|----------------------------|--|
| Type | TM-I 18 MC NE WS | Version |
| Order No. | 1718431044 | TM-I, Insert markers, 18 x 4 mm, white |
| GTIN (EAN) | 4008190349011 | |
| Qty. | 320 pc(s). | |

IE-C5DS4UG0005MBSMCS-E**Weidmüller Interface GmbH & Co. KG**

Klingenbergstraße 26

D-32758 Detmold

Germany

www.weidmueller.com**Accessories****Blank**

TM-I is an acknowledged and accredited marker type for traffic engineering applications. There are various different tag lengths available for individual labelling with long character strings. Easy handling of separation and installation thanks to the project marker field. Pre-attachment of sleeves and retrofitting of tags offer excellent versatility

The special contour of TM-I allows easy assembly and secures firm positioning. They are compatible with a number of commercially available sleeves. Thanks to the MultiCard format, the tags can be printed quickly and conveniently with the PrintJet CONNECT, plotter or the STI pen.

- Easy handling of separation and installation thanks to the project marker field.
- Acknowledged and accredited marker for traffic engineering applications
- Pre-attachment of sleeves and retrofitting of tags offer excellent versatility
- Not suited for labelling with P-Ink or STI pen in connection with CLI T sleeves

For custom printing: Please send us a file of our labeling software M-Print PRO or M-Print PRO Online (without installation) for your labeling specifications.

General ordering data

| | | |
|------------|----------------------------|--|
| Type | TM-I 12 MC NE WS | Version |
| Order No. | 1718411044 | TM-I, Insert markers, 12 x 4 mm, white |
| GTIN (EAN) | 4008190348977 | |
| Qty. | 320 pc(s). | |