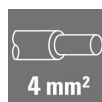
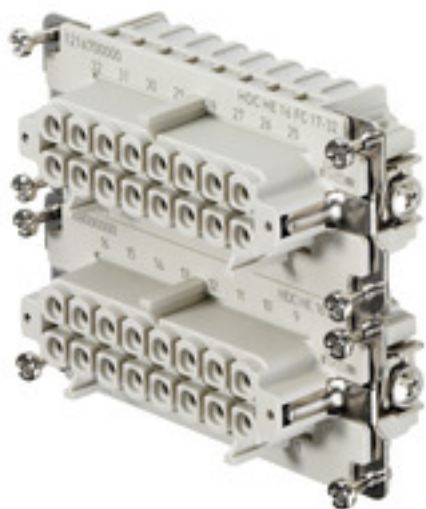


**HDC HE 16 FC 17-32****Weidmüller Interface GmbH & Co. KG**

Klingenbergstraße 26

D-32758 Detmold

Germany

[www.weidmueller.com](http://www.weidmueller.com)

For the crimp connection, the wire connection level is designed as a crimp contact. The proven crimp connection method has been in standard use for decades. Crimp contacts are not included in the scope of delivery of inserts.

**General ordering data**

Version	HDC insert, Female, 500 V, 16 A, Number of poles: 16, Crimp connection, Size: 6
Order No.	<a href="#">1216700000</a>
Type	HDC HE 16 FC 17-32
GTIN (EAN)	4008190073091
Qty.	1 pc(s).

## HDC HE 16 FC 17-32

Weidmüller Interface GmbH &amp; Co. KG

Klingenbergstraße 26

D-32758 Detmold

Germany

www.weidmueller.com

## Technical data

## Dimensions and weights

Depth	84.5 mm	Depth (inches)	3.327 inch
Height	33.5 mm	Height (inches)	1.319 inch
Width	34 mm	Width (inches)	1.339 inch
Net weight	54 g		

## Temperatures

Limit temperature	-40 °C ... 125 °C
-------------------	-------------------

## Dimensions

Height of socket	33.5 mm	Total length base	84.5 mm
Width	34 mm		

## General data

BG	6	Colour	beige
Conductor cross-section	4 mm <sup>2</sup>	Free from halogens	true
Insulating material	PC glass-fibre reinforced (UL-listed and railway-certified)	Insulating material group	IIIa
Insulation strength	10 <sup>10</sup> Ω	Low smoke acc. DIN EN 45545-2	Yes
Material	Copper alloy	Number of poles	16
Plugging cycles, gold	≥ 500	Plugging cycles, silver	≥ 500
Pollution severity	3	Rated current (DIN EN 61984)	16 A
Rated impulse voltage (DIN EN 61984)	6 kV	Rated voltage (DIN EN 61984)	500 V
Rated voltage according to UL/CSA	600 V AC/DC	Series	HE
Size	6	Type	Female
Type of connection	Crimp connection	UL 94 flammability rating	V-0
Volume resistance	≤2 mΩ		

## Connection data PE

Blade size, slotted (PE connection)	SD 0.8 x 4.0	Connection type PE	Screw connection
Fixing screw	M 4	Rated cross-section	4 mm <sup>2</sup>
Stripping length PE connection	10 mm	Tightening torque, max. PE connection	1.5 Nm
Tightening torque, min. PE connection	1.2 Nm	Wire cross section, AWG (PE), max.	AWG 12
Wire cross section, AWG (PE), min.	AWG 20		

## Version

BG	6	Conductor cross-section, max.	4 mm <sup>2</sup>
Conductor cross-section, min.	0.5 mm <sup>2</sup>	Material	Copper alloy
Size	6	Stripping length, rated connection	7.5 mm
Type of connection	Crimp connection	Volume resistance	≤2 mΩ
Wire connection cross section AWG, max.	AWG 12	Wire connection cross section AWG, min.	AWG 20
Wire connection cross section, finely stranded, max.	4 mm <sup>2</sup>	Wire connection cross section, finely stranded, min.	0.5 mm <sup>2</sup>
Wire connection cross-section, finely stranded with wire-end ferrules DIN 46228/4, max.	4 mm <sup>2</sup>	Wire cross-section, solid, max.	4 mm <sup>2</sup>
Wire cross-section, solid, min.	0.5 mm <sup>2</sup>		

## HDC HE 16 FC 17-32

Weidmüller Interface GmbH &amp; Co. KG

Klingenbergstraße 26

D-32758 Detmold

Germany

www.weidmueller.com

## Technical data

## Classifications

ETIM 6.0	EC000438	ETIM 7.0	EC000438
ETIM 8.0	EC000438	ETIM 9.0	EC000438
ECLASS 9.0	27-44-02-05	ECLASS 9.1	27-44-02-05
ECLASS 10.0	27-44-02-05	ECLASS 11.0	27-44-02-05
ECLASS 12.0	27-44-02-05	ECLASS 13.0	27-44-02-05

Substance	Acetone
Chemical resistance	Resistant
Substance	Ammonia, watery
Chemical resistance	Conditionally resistant
Substance	Petrol
Chemical resistance	Resistant
Substance	Benzene
Chemical resistance	Resistant
Substance	Diesel oil
Chemical resistance	Conditionally resistant
Substance	Acetic acid, concentrated
Chemical resistance	Resistant
Substance	Potassium hydroxide
Chemical resistance	Conditionally resistant
Substance	Methanol
Chemical resistance	Conditionally resistant
Substance	Motor oil
Chemical resistance	Conditionally resistant
Substance	Lye, diluted
Chemical resistance	Resistant
Substance	Hydrochlorofluorocarbons
Chemical resistance	Conditionally resistant
Substance	Outdoor use
Chemical resistance	Conditionally resistant

## Environmental Product Compliance

REACH SVHC	Potassium perfluorobutane sulfonate 29420-49-3
SCIP	1609748e-c278-4c9b-b3d1-e6215d2988cd
Chemical resistance	de.myview.objectmodel.impl.BlockImpl@59c02c4b de.myview.objectmodel.impl.BlockImpl@4f186a30 de.myview.objectmodel.impl.BlockImpl@7ec4c408 de.myview.objectmodel.impl.BlockImpl@10222453 de.myview.objectmodel.impl.BlockImpl@4858e068 de.myview.objectmodel.impl.BlockImpl@449d4ab9 de.myview.objectmodel.impl.BlockImpl@1c2132a6 de.myview.objectmodel.impl.BlockImpl@1da09dcd de.myview.objectmodel.impl.BlockImpl@127465b1 de.myview.objectmodel.impl.BlockImpl@3c923dc4 de.myview.objectmodel.impl.BlockImpl@29b39cf2 de.myview.objectmodel.impl.BlockImpl@30e422fc

**HDC HE 16 FC 17-32****Weidmüller Interface GmbH & Co. KG**

Klingenbergstraße 26

D-32758 Detmold

Germany

[www.weidmueller.com](http://www.weidmueller.com)**Technical data****Approvals**

Approvals



ROHS

Conform

**Downloads**Approval/Certificate/Document of Con-  
formity[Manufacturer's declaration](#)

Engineering Data

[CAD data – STEP](#)

Technical Documentation

[1216700000\\_HDC\\_HE\\_16\\_FC\\_17-32\\_STP\\_Blatt\\_1.pdf](#)

Catalogues

[Catalogues in PDF-format](#)

Brochures

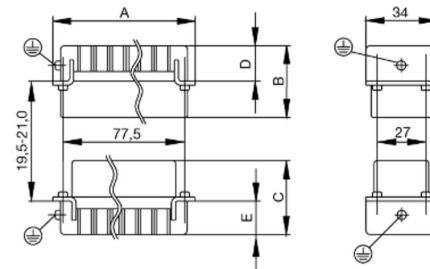
[FL FIELDWIRING EN](#)  
[FL FIELDWIRING EN](#)

## HDC HE 16 FC 17-32

**Weidmüller Interface GmbH & Co. KG**  
Klingenbergstraße 26  
D-32758 Detmold  
Germany

[www.weidmueller.com](http://www.weidmueller.com)

## Drawings



## HDC HE 16 FC 17-32

Weidmüller Interface GmbH &amp; Co. KG

Klingenbergstraße 26

D-32758 Detmold

Germany

www.weidmueller.com

## Accessories

## Slotted screwdriver



Slotted screwdriver with rounded blade SD DIN 5265, ISO 2380/2, output to DIN 5264, ISO 2380/1. ChromTop tip, SoftFinish grip

## General ordering data

Type	SDS 0.8X4.0X100	Version
Order No.	<a href="#">9008340000</a>	Screwdriver, Screwdriver
GTIN (EAN)	4032248056293	
Qty.	1 pc(s).	
Type	SDS 0.6X3.5X100	Version
Order No.	<a href="#">9008330000</a>	Screwdriver, Screwdriver
GTIN (EAN)	4032248056286	
Qty.	1 pc(s).	

## Crimping tools



## Crimping tools for turned contacts

- Ratchet guarantees precise crimping
- Release option in the event of incorrect operation
- With stop for exact positioning of the contacts.

## General ordering data

Type	CTX CM 1.6/2.5	Version
Order No.	<a href="#">9018490000</a>	Pressing tool, Crimping tool for contacts, 0.14mm <sup>2</sup> , 4mm <sup>2</sup> , W crimp
GTIN (EAN)	4008190884598	
Qty.	1 pc(s).	
Type	CTIN CM 1.6/2.5	Version
Order No.	<a href="#">9205430000</a>	Pressing tool, Crimping tool for contacts, 0.14mm <sup>2</sup> , 6mm <sup>2</sup> , 4-indent crimp
GTIN (EAN)	4032248733446	
Qty.	1 pc(s).	

**HDC HE 16 FC 17-32****Weidmüller Interface GmbH & Co. KG**

Klingenbergstraße 26

D-32758 Detmold

Germany

[www.weidmueller.com](http://www.weidmueller.com)**Accessories****Contact removal tools**

Weidmüller offers a variety of crimping tools, contact removal tools, and fibre optic tools.

**General ordering data**

Type	REMOVAL TOOL HE	Version
Order No.	<a href="#">1866750000</a>	Tools, Contact Removal Tool
GTIN (EAN)	4032248437078	
Qty.	1 pc(s).	

**HE**

Various accessories are available for our inserts. This includes coding elements for the inserts.

**General ordering data**

Type	HDC HE CP	Version
Order No.	<a href="#">1003240000</a>	Heavy-duty connectors, Accessories, Coding System
GTIN (EAN)	4032248698233	
Qty.	100 pc(s).	

## HDC HE 16 FC 17-32

Weidmüller Interface GmbH &amp; Co. KG

Klingenbergstraße 26

D-32758 Detmold

Germany

www.weidmueller.com

## Accessories

## Crimp contacts HE



Crimps provide a electrical and mechanical connection between wire and contact that is both secure and reliable. The optimal crimp connection is gas-tight and corrosion-resistant.

## General ordering data

Type	HDC-C-HE-BM2.5AU	Version
Order No.	<a href="#">1651500000</a>	Heavy-duty connectors, Crimp contact, HE, HEE, HQ, MixMate,
GTIN (EAN)	4008190400170	Female, Conductor cross-section, max.: 2.5, turned, Copper alloy
Qty.	100 pc(s).	
Type	HDC-C-HE-BM0.5AG	Version
Order No.	<a href="#">1201100000</a>	Heavy-duty connectors, Crimp contact, HE, HEE, HQ, MixMate,
GTIN (EAN)	4008190142698	Female, Conductor cross-section, max.: 0.5, turned, Copper alloy
Qty.	100 pc(s).	
Type	HDC-C-HE-BM4.0AG	Version
Order No.	<a href="#">1201500000</a>	Heavy-duty connectors, Crimp contact, HE, HEE, HQ, MixMate,
GTIN (EAN)	4008190148096	Female, Conductor cross-section, max.: 4, turned, Copper alloy
Qty.	100 pc(s).	
Type	HDC-C-HE-BM1.5AG	Version
Order No.	<a href="#">1201300000</a>	Heavy-duty connectors, Crimp contact, HE, HEE, HQ, MixMate,
GTIN (EAN)	4008190100346	Female, Conductor cross-section, max.: 1.5, turned, Copper alloy
Qty.	100 pc(s).	
Type	HDC-C-HE-BM0.5AU	Version
Order No.	<a href="#">1651470000</a>	Heavy-duty connectors, Crimp contact, HE, HEE, HQ, MixMate,
GTIN (EAN)	4008190400149	Female, Conductor cross-section, max.: 0.5, turned, Copper alloy
Qty.	100 pc(s).	
Type	HDC-C-HE-BM1.5AU	Version
Order No.	<a href="#">1651490000</a>	Heavy-duty connectors, Crimp contact, HE, HEE, HQ, MixMate,
GTIN (EAN)	4008190400163	Female, Conductor cross-section, max.: 1.5, turned, Copper alloy
Qty.	100 pc(s).	
Type	HDC-C-HE-BM0.75-1.00AG	Version
Order No.	<a href="#">1201200000</a>	Heavy-duty connectors, Crimp contact, HE, HEE, HQ, MixMate,
GTIN (EAN)	4008190044480	Female, Conductor cross-section, max.: 1, turned, Copper alloy
Qty.	100 pc(s).	
Type	HDC-C-HE-BM4.0AU	Version
Order No.	<a href="#">1651510000</a>	Heavy-duty connectors, Crimp contact, HE, HEE, HQ, MixMate,
GTIN (EAN)	4008190400187	Female, Conductor cross-section, max.: 4, turned, Copper alloy
Qty.	100 pc(s).	
Type	HDC-C-HE-BM0.75-1.00AU	Version
Order No.	<a href="#">1651480000</a>	Heavy-duty connectors, Crimp contact, HE, HEE, HQ, MixMate,
GTIN (EAN)	4008190400156	Female, Conductor cross-section, max.: 1, turned, Copper alloy
Qty.	100 pc(s).	



## HDC HE 16 FC 17-32

Weidmüller Interface GmbH &amp; Co. KG

Klingenbergstraße 26

D-32758 Detmold

Germany

www.weidmueller.com

## Accessories

Type	HDC-C-HE-BM2.5AG	Version
Order No.	<a href="#">1201400000</a>	Heavy-duty connectors, Crimp contact, HE, HEE, HQ, MixMate,
GTIN (EAN)	4008190047078	Female, Conductor cross-section, max.: 2.5, turned, Copper alloy
Qty.	100 pc(s).	

## DSTV



Various accessories are available for our inserts. This includes coding elements for the inserts.

## General ordering data

Type	DSTV COST4	Version
Order No.	<a href="#">1471300000</a>	Heavy-duty connectors, Accessories, Coding System
GTIN (EAN)	4008190017354	
Qty.	100 pc(s).	

Type	DSTV COBU5	Version
Order No.	<a href="#">1471500000</a>	Heavy-duty connectors, Accessories, Coding element
GTIN (EAN)	4008190178543	
Qty.	100 pc(s).	

## Crosshead screwdriver Phillips



VDE insulated crosshead screwdriver, for Phillips screws, SDIK PH DIN 7438, ISO 8764/2-PH, output to ISO 8764-PH, SoftFinish grip

## General ordering data

Type	SDIK PH1	Version
Order No.	<a href="#">9008570000</a>	Screwdriver, Screwdriver
GTIN (EAN)	4032248056569	
Qty.	1 pc(s).	

**HDC HE 16 FC 17-32****Weidmüller Interface GmbH & Co. KG**

Klingenbergstraße 26

D-32758 Detmold

Germany

[www.weidmueller.com](http://www.weidmueller.com)**Accessories****Slotted screwdriver**

VDE insulated slot-head screwdriver, SDI DIN 7437, ISO 2380/2, drive output acc. to DIN 5264, ISO 2380/1. SoftFinish grip

**General ordering data**

Type	SDIS 0.6X3.5X100	Version
Order No.	<a href="#">9008390000</a>	Screwdriver, Screwdriver
GTIN (EAN)	4032248056354	
Qty.	1 pc(s).	
Type	SDIS 0.8X4.0X100	Version
Order No.	<a href="#">9008400000</a>	Screwdriver, Screwdriver
GTIN (EAN)	4032248056361	
Qty.	1 pc(s).	

**Crosshead screwdriver Phillips**

Crosshead screwdriver, Phillips, SDK PH DIN 5262, ISO 8764/2-PH, output to ISO 8764-PH, ChromTop tip, SoftFinish grip

**General ordering data**

Type	SDK PH1	Version
Order No.	<a href="#">9008480000</a>	Screwdriver, Screwdriver
GTIN (EAN)	4032248056477	
Qty.	1 pc(s).	

# Tightening torques and screwing tools

Screw size	Connector type	Dia. tightening torque in Nm	Recommended blade inserts and AF size for hexagon socket
<b>M 2.5</b>	<b>Signal contacts</b>		
	S 6/6	0.5 - 0.55	SD 0.6 x 3.5 mm or PZ0
	S 6/12	0.5 - 0.55	SD 0.6 x 3.5 mm or PZ0
<b>M 2.9 x 0.5</b>	<b>Fastening screws</b>		
	HQ 4/2	0.8 (plastic) / 1.1 (metal)	SD 0.6 x 3.5 mm or PH0
	HQ 8	0.8 (plastic) / 1.1 (metal)	SD 0.6 x 3.5 mm or PH0
	HQ 17	0.8 (plastic) / 1.1 (metal)	SD 0.6 x 3.5 mm or PH0
<b>M 3</b>	<b>Contact screws</b>		
	HA 3	0.5 - 0.55	SD 0.5 x 3.0 mm
	HA 4	0.5 - 0.55	SD 0.5 x 3.0 mm
	HA 10 bis HA 48	0.5 - 0.55	SD 0.6 x 3.5 mm or PH0
	HE	0.5 - 0.55	SD 0.6 x 3.5 mm or PZ0
	HVE	0.5 - 0.55	SD 0.6 x 3.5 mm or PZ0
	<b>Signal contacts:</b>		
	S 4/2	0.5 - 0.55	SD 0.6 x 3.5 mm or PZ0
	S 4/8	0.5 - 0.55	SD 0.6 x 3.5 mm or PZ0
	<b>PE connection via female contact</b>		
	S 4	0.5 - 0.8	SD 0.6 x 3.5 mm
	ConCept modular frame, metal	0.5 - 0.55	SD 0.6 x 3.5 mm
	<b>PE terminal</b>		
	HQ 5	0.5 - 0.55	SD 0.6 x 3.5 or 0.8 x 4 mm
	HQ 7	0.5 - 0.55	SD 0.6 x 3.5 or 0.8 x 4 mm
	<b>Fastening screws</b>	0.5 - 0.55	SD 0.6 x 3.5 mm or PZ0
	<b>Guide pin</b>	0.5 - 0.55	SD 0.6 x 3.5 mm or PZ0
	<b>Guide bush</b>	0.5 - 0.55	SD 0.6 x 3.5 mm or PZ0
	<b>Coding pins</b>	0.5 - 0.55	SD 0.6 x 3.5 mm or PZ0
<b>M 4</b>	<b>Contact screws</b>		
	HSB	1.2 - 1.5	SD 0.6 x 3.5 or 0.8 x 4 mm or PZ1
	<b>PE connection via male contact</b>		
	S 4	0.5 - 0.8	SD 0.6 x 3.5 mm
	ConCept modular frame, metal	1.2 - 1.5	SD 0.6 x 3.5 mm
	<b>PE terminal</b>		
	HA	1.2 - 1.5	SD 0.6 x 3.5 or 0.8 x 4 mm or PH1
	HE	1.2 - 1.5	SD 0.6 x 3.5 or 0.8 x 4 mm or PH1
	HEE	1.2 - 1.5	SD 0.6 x 3.5 or 0.8 x 4 mm or PH1
	HVE	1.2 - 1.5	SD 0.6 x 3.5 or 0.8 x 4 mm or PH1
	HD	1.2 - 1.5	SD 0.6 x 3.5 or 0.8 x 4 mm or PZ1
	HDD	1.2 - 1.5	SD 0.6 x 3.5 or 0.8 x 4 mm or PZ1
	S 6/6 (for signal contacts)	1.2 - 1.5	0.8 x 4 mm or PZ1
	ConCept modular frame, plastic	1.2 - 1.5	0.8 x 4 mm or PZ1
<b>M 5</b>	<b>PE terminal</b>		
	HSB	2 - 2.5	SD 1 x 5.5 mm or PZ2
	S 4/0 (Screw connection)	2 - 2.5	SD 1.2 x 6.5 mm or PH2
	S 4/0 (Axial screw connection)	2 - 2.5	SD 0.8 x 4 mm or PZ 2
	S 4/2	2 - 2.5	SD 1.2 x 6.5 mm or PH2
	S 4/8	2 - 2.5	SD 1.2 x 6.5 mm or PH2
	S 6/12	2 - 2.5	SD 0.8 x 4 mm or PZ 2
	S 6/36	2 - 2.5	SD 1.2 x 6.5 mm or PH2
	S 8/24	2 - 2.5	SD 1.2 x 6.5 mm or PH2
	S 12/2	2 - 2.5	SD 1.2 x 6.5 mm or PH2
<b>M 6</b>	<b>Power contacts</b>		
	S 4/0 (Screw connection)	1.2 (1.5 mm <sup>2</sup> ) / 2 (2.5 mm <sup>2</sup> ) / 3 (4-16 mm <sup>2</sup> )	SD 0.8 x 4 mm
	S 4/2	1.2 (1.5 mm <sup>2</sup> ) / 2 (2.5 mm <sup>2</sup> ) / 3 (4-16 mm <sup>2</sup> )	SD 0.8 x 4 mm
	S 4/8	1.2 (1.5 mm <sup>2</sup> ) / 2 (2.5 mm <sup>2</sup> ) / 3 (4-16 mm <sup>2</sup> )	SD 0.8 x 4 mm
<b>M 7 x 0.75</b>	<b>Power contacts</b>		
	S 4	1.1 - 1.7	SW 2
	S 6/6 (+ PE)	6 - 8	SW 4
<b>M 8 x 0.75</b>	<b>Power contacts</b>		
	S 6/12	1.1 - 1.7	SW 2
	S 8/0 (+ PE)	6 (10-16 mm <sup>2</sup> ) - 7 (25 mm <sup>2</sup> )	SW 4
<b>M10 x 1</b>	<b>Power contacts</b>		
	S 4/0 (Axial connection)	2 - 3	SW 3

Increasing the tightening torque does not improve the contact resistance. The stated torque settings offer optimal mechanical, thermal and electrical conditions. Exceeding the recommended values may even damage the conductor and terminal.