

**BG GH 10P 4XVG PT6****Weidmüller Interface GmbH & Co. KG**

Klingenbergstraße 26

D-32758 Detmold

Germany

[www.weidmueller.com](http://www.weidmueller.com)

The FieldPower® housings are highly robust and meet the highest UL flammability class 5 VA.

- The "TS 35 PT6" mounting rail module and PT6 contact unit are easy to snap on.
- Hinged seals allow pre-assembled plug cables to also be used.
- The high cover versions enable the device to be installed.

For cable seals consult accessories.

**General ordering data**

Version	FieldPower® enclosures, 181 mm, 223 mm, 42 mm, IP65, in complete state, glass-fibre reinforced polycarbonate, black
Order No.	<a href="#">1121990000</a>
Type	BG GH 10P 4XVG PT6
GTIN (EAN)	4032248903030
Qty.	10 pc(s).

## BG GH 10P 4XVG PT6

**Weidmüller Interface GmbH & Co. KG**

Klingenbergstraße 26

D-32758 Detmold

Germany

[www.weidmueller.com](http://www.weidmueller.com)

## Technical data

### Dimensions and weights

Depth	42 mm	Depth (inches)	1.654 inch
Height	181 mm	Height (inches)	7.126 inch
Width	223 mm	Width (inches)	8.78 inch
Net weight	367 g		

### Temperatures

Storage temperature	-40 °C...85 °C	Operating temperature	-20 °C...80 °C
---------------------	----------------	-----------------------	----------------

### Cable gland

Cable gland clamping area, max.	12 mm	Cable gland clamping area, min.	6 mm
Cable gland material	Polyamide 6	Number of cable glands	4

### General data

Material	Polycarbonate, glass fibre reinforced	Enclosure material	glass-fibre reinforced polycarbonate
Silicone	No	Colour	black
Protection degree	IP65, in complete state	UL 94 flammability rating	5VA
Type of mounting	Screw mounting, Fixing lugs	With cable gland	Yes

### Classifications

ETIM 6.0	EC000261	ETIM 7.0	EC000261
ETIM 8.0	EC000261	ETIM 9.0	EC000261
ECLASS 9.0	27-18-01-01	ECLASS 9.1	27-18-92-90
ECLASS 10.0	27-18-01-01	ECLASS 11.0	27-18-01-01
ECLASS 12.0	27-18-01-01	ECLASS 13.0	27-18-01-01

### Environmental Product Compliance

REACH SVHC	Potassium perfluorobutane sulfonate 29420-49-3
SCIP	210f646e-64fd-46de-9a7c-8dff222ea2cb

### Approvals

Approvals



ROHS	Conform
UL File Number Search	UL Website
Certificate No. (UL)	E256877

### Downloads

Approval/Certificate/Document of Conformity	<a href="#">UL Certificate FieldPower® size 1 and 2 (10P) lid and base variants</a> <a href="#">Manufacturer's Declaration FieldPower® Enclosure parts</a>
Engineering Data	<a href="#">CAD data – STEP</a>
Catalogues	<a href="#">Catalogues in PDF-format</a>

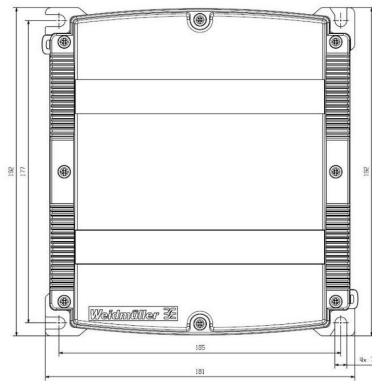
## BG GH 10P 4XVG PT6

**Weidmüller Interface GmbH & Co. KG**  
Klingenbergstraße 26  
D-32758 Detmold  
Germany

[www.weidmueller.com](http://www.weidmueller.com)

## Drawings

### Drilling template



## BG GH 10P 4XVG PT6

**Weidmüller Interface GmbH & Co. KG**

Klingenbergstraße 26

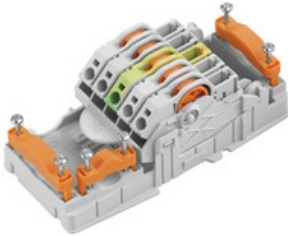
D-32758 Detmold

Germany

[www.weidmueller.com](http://www.weidmueller.com)

## Accessories

### AC/DC



Power distribution using uncut cables with cross-sections from 1.5 to 6 mm<sup>2</sup>.

Power supply / T-branch tap via PUSH IN connection (0.5 to 10 mm<sup>2</sup>) and/or plug-in connection (0.5 to 4 mm<sup>2</sup>).

Coloured markings provide clear assignment of wires.

- Power supply
- Power distribution
- Power branching

### General ordering data

Type	PT6 DC 1/2/PE/3/4	Version
Order No.	<a href="#">1534930000</a>	FieldPower® contact element, DC, IP20, Insulation displacement
GTIN (EAN)	4050118338775	connection (IDC), PUSH IN, Number of poles : 5
Qty.	1 pc(s).	
Type	PT6 230/BUS	Version
Order No.	<a href="#">1269960000</a>	FieldPower® contact element, AC, IP20, Insulation displacement
GTIN (EAN)	4050118058239	connection (IDC), PUSH IN, Number of poles : 5
Qty.	1 pc(s).	

### AC



Power distribution using uncut cables with cross-sections from 1.5 to 6 mm<sup>2</sup>.

Power supply / T-branch tap via PUSH IN connection (0.5 to 10 mm<sup>2</sup>) and/or plug-in connection (0.5 to 4 mm<sup>2</sup>).

Coloured markings provide clear assignment of wires.

- Power supply
- Power distribution
- Power branching

### General ordering data

Type	PT6	Version
Order No.	<a href="#">1957620000</a>	FieldPower® contact element, AC, IP20, Insulation displacement
GTIN (EAN)	4032248642489	connection (IDC), PUSH IN, Number of poles : 5
Qty.	1 pc(s).	

## BG GH 10P 4XVG PT6

**Weidmüller Interface GmbH & Co. KG**

Klingenbergstraße 26

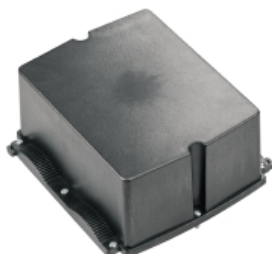
D-32758 Detmold

Germany

[www.weidmueller.com](http://www.weidmueller.com)

## Accessories

### Generation 1



The FieldPower® housings are highly robust and meet the highest UL flammability class 5 VA.

- The "TS 35 PT6" mounting rail module and PT6 contact unit are easy to snap on.
- Hinged seals allow pre-assembled plug cables to also be used.
- The high cover versions enable the device to be installed.

For cable seals consult accessories.

### General ordering data

Type	BG GHDE 10P HO GK PT6	Version
Order No.	<a href="#">2486990000</a>	FieldPower® enclosures, 181 mm, 192 mm, 87 mm, IP65, in complete state, Polycarbonate, Transparent
GTIN (EAN)	4050118497595	
Qty.	5 pc(s).	
Type	BG GHDE 10P HO PT6	Version
Order No.	<a href="#">1121950000</a>	FieldPower® enclosures, 181 mm, 192 mm, 87 mm, IP65, in complete state, glass-fibre reinforced polycarbonate, black
GTIN (EAN)	4032248903016	
Qty.	10 pc(s).	
Type	BG GHDE 10P PT6	Version
Order No.	<a href="#">1122200000</a>	FieldPower® enclosures, 181 mm, 192 mm, 25 mm, IP65, in complete state, glass-fibre reinforced polycarbonate, black
GTIN (EAN)	4032248903207	
Qty.	10 pc(s).	

### Adapters



#### HQ adapter for FieldPower®

Tool-free installation like a FieldPower cable seal  
Suitable for the HQ 4/2, HQ 8 and HQ 17 plug-in connector inserts

Optionally with lockable protective cover (protection against being switched on again, in accordance with EN 60204-1)

### General ordering data

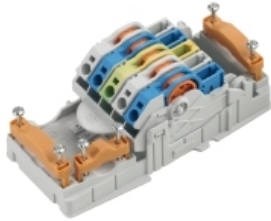
Type	BG ARGH HQP ALU PT6 CS	Version
Order No.	<a href="#">1532210000</a>	Adapter, Field Power® sealing insert, HQ adapter, IP65, with corresponding enclosure, Polycarbonate, glass fibre reinforced, lockable: Yes
GTIN (EAN)	4050118337600	
Qty.	1 pc(s).	
Type	BG ARGH HQP ALU PT6	Version
Order No.	<a href="#">1532200000</a>	Adapter, Field Power® sealing insert, HQ adapter, IP65, with corresponding enclosure, Polycarbonate, glass fibre reinforced, lockable: No
GTIN (EAN)	4050118337433	
Qty.	1 pc(s).	

**BG GH 10P 4XVG PT6****Weidmüller Interface GmbH & Co. KG**

Klingenbergstraße 26

D-32758 Detmold

Germany

[www.weidmueller.com](http://www.weidmueller.com)**Accessories****DC**

Power distribution using uncut cables with cross-sections from 1.5 to 6 mm<sup>2</sup>.

Power supply / T-branch tap via PUSH IN connection (0.5 to 10 mm<sup>2</sup>) and/or plug-in connection (0.5 to 4 mm<sup>2</sup>).

Coloured markings provide clear assignment of wires.

- Power supply
- Power distribution
- Power branching

**General ordering data**

Type	PT6 DC	Version
Order No.	<a href="#">1126840000</a>	FieldPower® contact element, DC, IP20, Insulation displacement
GTIN (EAN)	4032248908462	connection (IDC), PUSH IN, Number of poles : 5
Qty.	1 pc(s).	

**Terminal rails for lower parts of enclosure**

Extensive range of accessories for the FieldPower® boxes.

Cable seals, terminal rails, locking elements and much more.

**General ordering data**

Type	TS 35 PT6	Version
Order No.	<a href="#">1170690000</a>	Field Power® terminal rail, Steel, galvanized, 54 mm, for base part
GTIN (EAN)	4032248962532	
Qty.	10 pc(s).	

# BG GH 10P 4XVG PT6

**Weidmüller Interface GmbH & Co. KG**

Klingenbergstraße 26

D-32758 Detmold

Germany

[www.weidmueller.com](http://www.weidmueller.com)

## Accessories

### Seals



### Intelligent cabling solutions can save you valuable time and money.

The FieldPower® modular system contains the right solution for every cabling task.

Foldable seals for the use of pre-assembled cables

Seals available with M16 and M20 connection thread  
Integration of operating and signalling devices into the seal possible

### General ordering data

Type	RKDG D18 WG PT6	Version
Order No.	<a href="#">2491870000</a>	Field Power® sealing insert, Seal, IP54, with corresponding enclosure,
GTIN (EAN)	4050118501537	EPDM
Qty.	10 pc(s).	
Type	RKDG D24 WG PT6	Version
Order No.	<a href="#">1069060000</a>	Field Power® sealing insert, Seal, IP54, with corresponding enclosure,
GTIN (EAN)	4032248827053	EPDM
Qty.	10 pc(s).	
Type	RKDG D11 PT6	Version
Order No.	<a href="#">4323210000</a>	Field Power® sealing insert, Foldable seal, IP65 with corresponding
GTIN (EAN)	4032248641215	housing, IP65, with corresponding enclosure, EPDM
Qty.	10 pc(s).	
Type	RKDGE D2X6,5 PT6	Version
Order No.	<a href="#">2443800000</a>	Field Power® sealing insert, Slotted sealing insert, IP54, in
GTIN (EAN)	4050118457704	combination with RKDG D17 PT6, with corresponding enclosure, TPE-
Qty.	10 pc(s).	V
Type	DG D0 PT6	Version
Order No.	<a href="#">4323240000</a>	Field Power® sealing insert, Blank seal, IP65, with corresponding
GTIN (EAN)	4032248641246	enclosure, EPDM
Qty.	10 pc(s).	
Type	RKDG D17 PT6	Version
Order No.	<a href="#">4324010000</a>	Field Power® sealing insert, Foldable seal, IP65 with corresponding
GTIN (EAN)	4032248641284	housing, IP65, with corresponding enclosure, EPDM
Qty.	10 pc(s).	
Type	RKDG D9 PT6	Version
Order No.	<a href="#">4329610000</a>	Field Power® sealing insert, Foldable seal, IP65 with corresponding
GTIN (EAN)	4032248668687	housing, IP65, with corresponding enclosure, EPDM
Qty.	10 pc(s).	
Type	RKDG 2XD8.5 WG PT6	Version
Order No.	<a href="#">1114530000</a>	Field Power® sealing insert, Seal, IP54, with corresponding enclosure,
GTIN (EAN)	4032248892624	EPDM
Qty.	10 pc(s).	
Type	DG M20 PT6	Version
Order No.	<a href="#">2545550000</a>	Field Power® sealing insert, Seal with connection thread, IP65, with
GTIN (EAN)	4050118555530	corresponding enclosure, EPDM
Qty.	1 pc(s).	
Type	DG M16 PT6	Version
Order No.	<a href="#">2545540000</a>	Field Power® sealing insert, Seal with connection thread, IP65, with
GTIN (EAN)	4050118555523	corresponding enclosure, EPDM
Qty.	1 pc(s).	

Creation date May 20, 2024 11:15:40 PM CEST

Catalogue status 04.05.2024 / We reserve the right to make technical changes.

## BG GH 10P 4XVG PT6

**Weidmüller Interface GmbH & Co. KG**

Klingenbergstraße 26

D-32758 Detmold

Germany

[www.weidmueller.com](http://www.weidmueller.com)

## Accessories

Type	RKDG D13 PT6	Version
Order No.	<a href="#">4323230000</a>	Field Power® sealing insert, Foldable seal, IP65 with corresponding
GTIN (EAN)	4032248641239	housing, IP65, with corresponding enclosure, EPDM
Qty.	10 pc(s).	
Type	RKDGE D4X4 PT6	Version
Order No.	<a href="#">2443760000</a>	Field Power® sealing insert, Slotted sealing insert, IP54, in
GTIN (EAN)	4050118457643	combination with RKDG D17 PT6, with corresponding enclosure, TPE-
Qty.	10 pc(s).	V
Type	RKDG D15 PT6	Version
Order No.	<a href="#">4323220000</a>	Field Power® sealing insert, Foldable seal, IP65 with corresponding
GTIN (EAN)	4032248641222	housing, IP65, with corresponding enclosure, EPDM
Qty.	10 pc(s).	

## Functional lid



The FieldPower® housings are highly robust and meet the highest UL flammability class 5 VA.

- The "TS 35 PT6" mounting rail module and PT6 contact unit are easy to snap on.
- Hinged seals allow pre-assembled plug cables to also be used.
- The high cover versions enable the device to be installed.

For cable seals consult accessories.

## General ordering data

Type	GHDE 10P HO ON/OFF PTS4	Version
Order No.	<a href="#">8000005211</a>	FieldPower® enclosures, 181 mm, 192 mm, 122 mm, IP65,
GTIN (EAN)	4050118048568	in complete state, glass-fibre reinforced polycarbonate, black,
Qty.	1 pc(s).	Maintenance switch