

HDC IP68 HP 24B A**Weidmüller Interface GmbH & Co. KG**

Klingenbergstraße 26

D-32758 Detmold

Germany

www.weidmueller.com**IP68**

The RockStar[®] HighPower housings are manufactured from high-strength die-cast aluminium and offer perfect protection against harsh environmental conditions thanks to continual optimisation. The multi-part housing gives users the opportunity to examine work processes down to the last step in the workflow.

General ordering data

Version	HDC enclosures, Size: 8, Protection degree: IP68, IP69K, IP68 (in plugged condition), Bulkhead housing, Clamping yoke connection, Standard
Order No.	1120040000
Type	HDC IP68 HP 24B A
GTIN (EAN)	4032248901418
Qty.	1 pc(s).

HDC IP68 HP 24B A

Weidmüller Interface GmbH & Co. KG

Klingenbergstraße 26

D-32758 Detmold

Germany

www.weidmueller.com

Technical data

Dimensions and weights

Depth	216 mm	Depth (inches)	8.504 inch
Height	49.8 mm	Height (inches)	1.961 inch
Width	72 mm	Width (inches)	2.835 inch
Net weight	643 g		

Temperatures

Limit temperature	-50 °C ... 120 °C
-------------------	-------------------

General data

EMC housings	Yes	Housing main material	diecast aluminium
Material of locking element		Protection degree	IP68, IP69K, IP68 (in plugged condition)
Series	Stainless steel, rust-proof HighPower	Surface finish	Powder coating

Version

BG	8	Clamp version	Clamping yoke connection
Colour (RAL)	RAL 9011, RAL 9005	Design	Standard
Design of housing	Bulkhead housing	Design of locking system	Clamping yoke connection
Sealing	Silicone rubber	Size	8
Top part/bottom part/lid	lower part	Type	Bulkhead (feed-through)

Classifications

ETIM 6.0	EC000437	ETIM 7.0	EC000437
ETIM 8.0	EC000437	ETIM 9.0	EC000437
ECLASS 9.0	27-44-02-02	ECLASS 9.1	27-44-02-02
ECLASS 10.0	27-44-02-02	ECLASS 11.0	27-44-02-02
ECLASS 12.0	27-44-02-02	ECLASS 13.0	27-44-02-02

Substance	Acetone
Chemical resistance	Resistant
Substance	Diesel oil
Chemical resistance	Unstable
Substance	Ethyl alcohol
Chemical resistance	Resistant
Substance	Transmission oil
Chemical resistance	Conditionally resistant
Substance	Hydraulic oil
Chemical resistance	Conditionally resistant
Substance	Petroleum benzine
Chemical resistance	Unstable
Substance	Sweat
Chemical resistance	Conditionally resistant
Substance	Premium gasoline
Chemical resistance	Unstable

Creation date June 4, 2024 8:43:37 AM CEST

HDC IP68 HP 24B A**Weidmüller Interface GmbH & Co. KG**

Klingenbergstraße 26

D-32758 Detmold

Germany

www.weidmueller.com**Technical data**

Substance	Water
Chemical resistance	Resistant
Substance	UV
Chemical resistance	Resistant
Substance	Ozone
Chemical resistance	Resistant

Approvals

ROHS Conform

DownloadsApproval/Certificate/Document of Con-
formity[Manufacturer's declaration](#)

Engineering Data

[CAD data – STEP](#)

User Documentation

[HDC_HP_MOAL_IP68_PLUS_ABGH](#)

Catalogues

[Catalogues in PDF-format](#)

Brochures

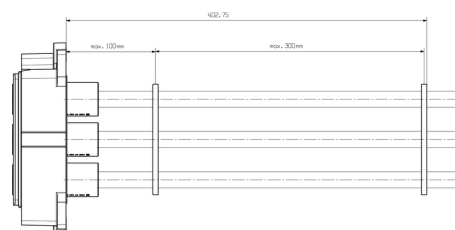
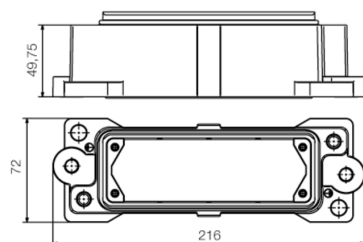
[FL FIELDWIRING EN](#)[FL FIELDWIRING EN](#)

HDC IP68 HP 24B A

Weidmüller Interface GmbH & Co. KG
Klingenbergstraße 26
D-32758 Detmold
Germany

www.weidmueller.com

Drawings



To avoid damage to the contacts and insulating sleeves, we recommend fixing the cable. The corresponding distances are shown in the following drawing. The cable fixation is not included in the scope of delivery.

HDC IP68 HP 24B A**Weidmüller Interface GmbH & Co. KG**

Klingenbergstraße 26

D-32758 Detmold

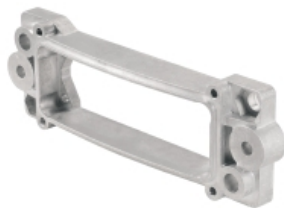
Germany

www.weidmueller.com**Accessories****Plug housing**

The RockStar® HighPower housings are manufactured from high-strength die-cast aluminium and offer perfect protection against harsh environmental conditions thanks to continual optimisation. The multi-part housing gives users the opportunity to examine work processes down to the last step in the workflow.

General ordering data

Type	HDC IP68 HP 24B TO	Version
Order No.	1079930000	HDC enclosures, Size: 8, Protection degree: IP68, IP69K, IP68
GTIN (EAN)	4032248842032	(in plugged condition), Plug housing, Clamping yoke connection,
Qty.	1 pc(s).	Standard

Counter-frame

The RockStar® HighPower housings are manufactured from high-strength die-cast aluminium and offer perfect protection against harsh environmental conditions thanks to continual optimisation. The multi-part housing gives users the opportunity to examine work processes down to the last step in the workflow.

General ordering data

Type	HDC IP68 24B HP FRAME	Version
Order No.	1282820000	HDC enclosures, Size: 8, Protection degree: IP68, IP69K, IP68 (in
GTIN (EAN)	4050118073010	plugged condition), , Clamping yoke connection, Standard
Qty.	1 pc(s).	