

**HDC IP68 04A AWS 1M20****Weidmüller Interface GmbH & Co. KG**

Klingenbergstraße 26

D-32758 Detmold

Germany

[www.weidmueller.com](http://www.weidmueller.com)**IP68**

The new RockStar® enclosures are resistant to seawater and offer a high degree of shock resistance, meet IP 68 and IP 69K, and have been developed for use under extreme environmental conditions and designed for the high vibration requirements acc. to DIN EN 61373 cat. 2 (bogie). As such, this housing family is ideally suited for fault- and maintenance-free operation of heavy-duty connectors in transport and traffic engineering as well as in power engineering and in applications with extreme requirements. During development, measures were also implemented to make the enclosures extremely EMC-resistant.

**General ordering data**

Version	HDC enclosures, Size: 1, Protection degree: IP66 (in plugged condition), IP68 (in plugged condition), Bulkhead housing, Clamping yoke connection, Standard, Size of cable entries: M 20
Order No.	<a href="#">1081480000</a>
Type	HDC IP68 04A AWS 1M20
GTIN (EAN)	4032248844227
Qty.	1 pc(s).

Creation date August 29, 2024 5:21:56 AM CEST

## HDC IP68 04A AWS 1M20

Weidmüller Interface GmbH &amp; Co. KG

Klingenbergstraße 26

D-32758 Detmold

Germany

www.weidmueller.com

## Technical data

## Dimensions and weights

Depth	50 mm	Depth (inches)	1.969 inch
Height	44 mm	Height (inches)	1.732 inch
Width	67 mm	Width (inches)	2.638 inch
Mounting dimension - height	41 mm	Mounting dimension - width	41 mm
Net weight	135 g		

## Temperatures

Limit temperature	-50 °C ... 125 °C
-------------------	-------------------

## Dimensions

Cable entry	w. thread	Height of housing B	44 mm
Hole pitch length A2	41 mm	Total length housing	50 mm

## General data

EMC housings	Yes	Housing main material	diecast aluminium
Protection degree	IP66 (in plugged condition), IP68 (in plugged condition)	Surface finish	Powder coating

## Version

BG	1	Cable entry	w. thread
Clamp version	Clamping yoke connection	Colour (RAL)	RAL 9011
Design	Standard	Design of housing	Bulkhead housing
Design of locking system	Clamping yoke connection	Internal thread	M 20
Number of cable entry on top	0	Number of cable entry sideways	1
Sealing	Silicone	Size	1
Size of cable entries	M 20	Suitable for ModuPlug®	No
Top part/bottom part/lid	lower part	Type	Bulkhead (feed-through)

## Classifications

ETIM 6.0	EC000437	ETIM 7.0	EC000437
ETIM 8.0	EC000437	ETIM 9.0	EC000437
ECLASS 9.0	27-44-02-02	ECLASS 9.1	27-44-02-02
ECLASS 10.0	27-44-02-02	ECLASS 11.0	27-44-02-02
ECLASS 12.0	27-44-02-02	ECLASS 13.0	27-44-02-02
ECLASS 14.0	27-44-02-02		

Substance	Acetone
Chemical resistance	Resistant
Substance	Diesel oil
Chemical resistance	Unstable
Substance	Ethyl alcohol
Chemical resistance	Resistant
Substance	Transmission oil
Chemical resistance	Conditionally resistant
Substance	Hydraulic oil

## HDC IP68 04A AWS 1M20

Weidmüller Interface GmbH &amp; Co. KG

Klingenbergstraße 26

D-32758 Detmold

Germany

www.weidmueller.com

## Technical data

Chemical resistance	Conditionally resistant
Substance	Petroleum benzine
Chemical resistance	Unstable
Substance	Sweat
Chemical resistance	Conditionally resistant
Substance	Premium gasoline
Chemical resistance	Unstable
Substance	Water
Chemical resistance	Resistant
Substance	UV
Chemical resistance	Resistant
Substance	Ozone
Chemical resistance	Resistant

## Environmental Product Compliance

REACH SVHC

/

Chemical resistance

de.myview.objectmodel.impl.BlockImpl@545435a de.myview.objectmodel.impl.BlockImpl@76736987  
 de.myview.objectmodel.impl.BlockImpl@7e25199c de.myview.objectmodel.impl.BlockImpl@214bf429  
 de.myview.objectmodel.impl.BlockImpl@e3b3cc9 de.myview.objectmodel.impl.BlockImpl@63e953d8  
 de.myview.objectmodel.impl.BlockImpl@35d65fc0 de.myview.objectmodel.impl.BlockImpl@4b420fef  
 de.myview.objectmodel.impl.BlockImpl@1c48af3a de.myview.objectmodel.impl.BlockImpl@359658f8  
 de.myview.objectmodel.impl.BlockImpl@323929d5

RoHS Compliance Status

Compliant without exemption

## Important note

Product information

When mounting the housings, make sure that the flat gasket is correctly seated.

## Approvals

Approvals



ROHS

Conform

## Downloads

Approval/Certificate/Document of Conformity

[Manufacturer's declaration](#)

Engineering Data

[CAD data – STEP](#)

Product Change Notification

[20220214 Technical change to HDC housings](#)  
[20220214 Technische Änderung bei HDC-Gehäusen](#)

Catalogues

[Catalogues in PDF-format](#)

Brochures

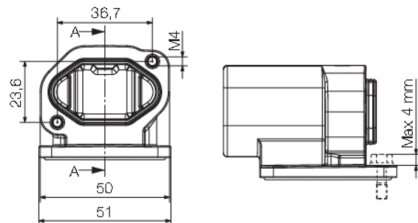
[FL FIELDWIRING EN](#)  
[FL FIELDWIRING EN](#)

## HDC IP68 04A AWS 1M20

**Weidmüller Interface GmbH & Co. KG**  
Klingenbergstraße 26  
D-32758 Detmold  
Germany

[www.weidmueller.com](http://www.weidmueller.com)

# Drawings



**HDC IP68 04A AWS 1M20****Weidmüller Interface GmbH & Co. KG**

Klingenbergstraße 26

D-32758 Detmold

Germany

[www.weidmueller.com](http://www.weidmueller.com)**Accessories****Flange seals**

We offer a variety of accessories, including seals, to accompany the housings.

Because of the excellent sealing, you can achieve the best seal possible with our housings.

Extensive testing has confirmed it – RockStar® remains impermeable to water to a depth of 50 metres. This allows you to use heavy-duty connectors in environments which previously required fixed-wire installation.

**General ordering data**

Type	HDC FLDG 04A AW IP68	Version
Order No.	<a href="#">1987470000</a>	Accessories, Enclosures accessories
GTIN (EAN)	4050118379204	
Qty.	100 pc(s).	

**IP68 O-ring seals**

We offer a variety of accessories, including seals, to accompany the housings.

Because of the excellent sealing, you can achieve the best seal possible with our housings.

Extensive testing has confirmed it – RockStar® remains impermeable to water to a depth of 50 metres. This allows you to use heavy-duty connectors in environments which previously required fixed-wire installation.

**General ordering data**

Type	HDC DG 04A IP68	Version
Order No.	<a href="#">1987460000</a>	Accessories, Enclosures accessories
GTIN (EAN)	4050118379259	
Qty.	100 pc(s).	