

IE-BSS-V14M-LCD-SM-C**Weidmüller Interface GmbH & Co. KG**

Klingenbergstraße 26

D-32758 Detmold

Germany

www.weidmueller.com

PushPull plug-in connector set according to IEC
61076-3-117 ver.14 (PROFINET), metal incl. LC insert

General ordering data

| | |
|------------|--|
| Version | Flange FO, IP67, Variant 14 standardized flange, LC Duplex coupling, Singlemode |
| Order No. | 1058150000 |
| Type | IE-BSS-V14M-LCD-SM-C |
| GTIN (EAN) | 4032248799268 |
| Qty. | 10 pc(s). |

IE-BSS-V14M-LCD-SM-C**Weidmüller Interface GmbH & Co. KG**

Klingenbergstraße 26

D-32758 Detmold

Germany

www.weidmueller.com

Technical data**Dimensions and weights**

| | | | |
|------------|---------|-----------------|------------|
| Depth | 33 mm | Depth (inches) | 1.299 inch |
| Height | 42 mm | Height (inches) | 1.654 inch |
| Width | 22.2 mm | Width (inches) | 0.874 inch |
| Net weight | 2.5 g | | |

Temperatures

| | |
|-----------------------|----------------|
| Operating temperature | -40 °C...70 °C |
|-----------------------|----------------|

General data

| | | | |
|-------------------|---------------|---------------------------|--|
| Colour | Miscellaneous | Connection 1 | LC Duplex |
| Connection 2 | LC Duplex | Description of article | Variant 14 standardized flange, LC Duplex coupling |
| Fibre type | Singlemode | Housing main material | Zinc diecast |
| Insertion loss | ≤ 0.5 dB | Plugging cycles | 500 |
| Protection degree | IP67 | Return loss (attenuation) | ≥ 40 dB |
| Type of mounting | 2 screws | | |

General standards

| | |
|--------------------|--|
| Connector standard | IEC 61076-3-117 Var. 14, IEC 61754-20 |
|--------------------|--|

Classifications

| | | | |
|-------------|-------------|-------------|-------------|
| ETIM 6.0 | EC001122 | ETIM 7.0 | EC001122 |
| ETIM 8.0 | EC001122 | ETIM 9.0 | EC001122 |
| ECLASS 9.0 | 19-17-01-22 | ECLASS 9.1 | 19-17-01-22 |
| ECLASS 10.0 | 19-17-01-22 | ECLASS 11.0 | 19-17-01-22 |
| ECLASS 12.0 | 19-17-01-22 | ECLASS 13.0 | 19-17-01-22 |

Environmental Product Compliance

| | |
|------------------------|-----------------------------|
| REACH SVHC | / |
| RoHS Compliance Status | Compliant without exemption |

Approvals

| | |
|------|---------|
| ROHS | Conform |
|------|---------|

Downloads

| | |
|--------------------|--|
| Engineering Data | CAD data – STEP |
| User Documentation | MAN IE GUIDE DE MAN IE GUIDE EN Designation key / Type key Manual |
| Catalogues | Catalogues in PDF-format |
| Brochures | FL FIELDWIRING EN PI PROFINET CABLING EN PI PROFINET CABLING EN |

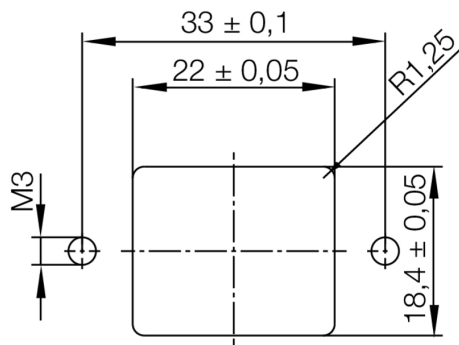
IE-BSS-V14M-LCD-SM-C

Weidmüller Interface GmbH & Co. KG
Klingenbergstraße 26
D-32758 Detmold
Germany

www.weidmueller.com

Drawings

Installation cut-out



IE-BSS-V14M-LCD-SM-C**Weidmüller Interface GmbH & Co. KG**

Klingenbergstraße 26

D-32758 Detmold

Germany

www.weidmueller.com**Accessories****Dust caps**

For protecting your devices against dust and dirt.

General ordering data

| | | |
|------------|----------------------------|--|
| Type | IE-BP-V14P | Version |
| Order No. | 1058310000 | Flange-mounted housing, protective cap |
| GTIN (EAN) | 4032248799404 | |
| Qty. | 10 pc(s). | |