

**LS 2.8 WDU2.5-10****Weidmüller Interface GmbH & Co. KG**

Klingenbergstraße 26

D-32758 Detmold

Germany

[www.weidmueller.com](http://www.weidmueller.com)**Product image**

With the LS 2.8 WDU2.5-10, many feed-through modular terminal blocks from the W series can be converted very easily. Inserting the LS 2.8 WDU2.5-10 allows the cable shielding braid to be looped through directly at the terminal block by soldering or using a suitable flat cable lug.

**General ordering data**

Version	W-Series, Shield bus
Order No.	<a href="#">1056400000</a>
Type	LS 2.8 WDU2.5-10
GTIN (EAN)	4008190036454
Qty.	100 pc(s).

## LS 2.8 WDU2.5-10

Weidmüller Interface GmbH &amp; Co. KG

Klingenbergstraße 26

D-32758 Detmold

Germany

www.weidmueller.com

## Technical data

## Dimensions and weights

Depth	4.3 mm	Depth (inches)	0.169 inch
Height	75.2 mm	Height (inches)	2.961 inch
Width	1.15 mm	Width (inches)	0.045 inch
Net weight	1.59 g		

## Temperatures

Storage temperature	-25 °C...55 °C
---------------------	----------------

## Material data

Material	tinned copper	Colour	Silver grey
----------	---------------	--------	-------------

## Additional technical data

Explosion-tested version	No	Installation advice	Direct mounting
Type of fixing	Snap-on		

## General

Installation advice	Direct mounting
---------------------	-----------------

## Classifications

ETIM 6.0	EC002848	ETIM 7.0	EC002848
ETIM 8.0	EC002848	ETIM 9.0	EC002848
ECLASS 9.0	27-14-11-92	ECLASS 9.1	27-14-11-92
ECLASS 10.0	27-14-11-92	ECLASS 11.0	27-14-11-92
ECLASS 12.0	27-14-11-92	ECLASS 13.0	27-14-11-92
ECLASS 14.0	27-14-11-92		

## Environmental Product Compliance

REACH SVHC	/
RoHS Compliance Status	Compliant without exemption

## Approvals

ROHS	Conform
------	---------

## Downloads

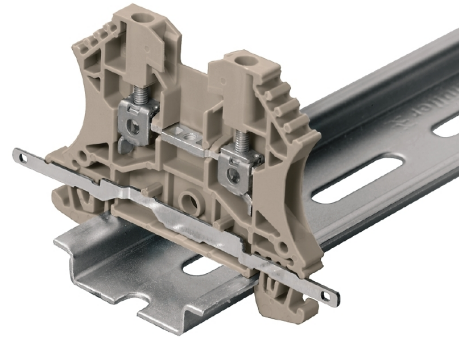
Engineering Data	<a href="#">CAD data – STEP</a>
User Documentation	<a href="#">Beipackzettel_LS2.8.pdf</a> <a href="#">StorageConditionsTerminalBlocks</a>
Catalogues	<a href="#">Catalogues in PDF-format</a>
Brochures	<a href="#">CAT 1 TERM 16/17 EN</a>

**LS 2.8 WDU2.5-10**

**Weidmüller Interface GmbH & Co. KG**  
Klingenbergstraße 26  
D-32758 Detmold  
Germany

[www.weidmueller.com](http://www.weidmueller.com)

**Drawings**



## LS 2.8 WDU2.5-10

Weidmüller Interface GmbH &amp; Co. KG

Klingenbergstraße 26

D-32758 Detmold

Germany

www.weidmueller.com

## Accessories

## Cable-lug sleeves

**Insulated tab-connector sleeves made from PVC with copper sleeve**

- Commercially available designs
- Not soldered
- With conical entry funnel

## General ordering data

Type	VFSKHI/0,5-1,0/288	Version
Order No.	<a href="#">1491650000</a>	cable lug, terminal end, Insulated cable connector, 1 mm <sup>2</sup> , 0,5 mm <sup>2</sup> - 1
GTIN (EAN)	4050118301519	mm <sup>2</sup> , red
Qty.	100 pc(s).	
Type	VFSKHI/1,5-2,5/288	Version
Order No.	<a href="#">1491740000</a>	cable lug, terminal end, Insulated cable connector, 2,5 mm <sup>2</sup> , 1,5 mm <sup>2</sup> -
GTIN (EAN)	4050118301472	2,5 mm <sup>2</sup> , blue
Qty.	100 pc(s).	
Type	LIF 1,5F288 R	Version
Order No.	<a href="#">9200520000</a>	cable lug, terminal end, Insulated cable connector, 1,5 mm <sup>2</sup> , 0,5 mm <sup>2</sup> -
GTIN (EAN)	4032248410361	1,5 mm <sup>2</sup> , red
Qty.	100 pc(s).	
Type	VFSKHI/0,1-0,5/288	Version
Order No.	<a href="#">1491630000</a>	cable lug, terminal end, Insulated cable connector, 0,5 mm <sup>2</sup> , 0,1 mm <sup>2</sup> -
GTIN (EAN)	4050118301489	0,5 mm <sup>2</sup> , yellow
Qty.	100 pc(s).	

## Cable-lug sleeves, fully insulated

**Fully-insulated tab-connector sleeves made from PVC with copper sleeve**

- Commercially available designs
- Not soldered
- With conical entry funnel

## General ordering data

Type	VFSKHV/0,5-1,0/288	Version
Order No.	<a href="#">1491870000</a>	cable lug, terminal end, Insulated cable connector, 1 mm <sup>2</sup> , 0,5 mm <sup>2</sup> - 1
GTIN (EAN)	4050118301908	mm <sup>2</sup> , red
Qty.	100 pc(s).	