

FP BOX FUSE R**Weidmüller Interface GmbH & Co. KG**

Klingenbergstraße 26

D-32758 Detmold

Germany

www.weidmueller.com

The FieldPower® power distributors support error-free installation in an extremely short space of time. Branches and functions integrated in the cover can simply be plugged in. Robust with high protection degree.

General ordering data

| | |
|------------|--|
| Version | FieldPower® power distribution box, 3-phase AC, IP65, in closed state, glass-fibre reinforced polycarbonate, Insulation displacement connection (IDC), PUSH IN, Fuse |
| Order No. | 1025060000 |
| Type | FP BOX FUSE R |
| GTIN (EAN) | 4032248745869 |
| Qty. | 1 pc(s). |

FP BOX FUSE R**Weidmüller Interface GmbH & Co. KG**

Klingenbergstraße 26

D-32758 Detmold

Germany

www.weidmueller.com**Technical data****Dimensions and weights**

| | | | |
|------------|--------|-----------------|------------|
| Depth | 86 mm | Depth (inches) | 3.386 inch |
| Height | 181 mm | Height (inches) | 7.126 inch |
| Width | 104 mm | Width (inches) | 4.094 inch |
| Net weight | 707 g | | |

Temperatures

| | | | |
|---------------------|----------------|-----------------------|----------------|
| Storage temperature | -40 °C...85 °C | Operating temperature | -40 °C...55 °C |
|---------------------|----------------|-----------------------|----------------|

Clamping capacity

| | | |
|---|---|--|
| Connection data - contact element power bus | Wire connection method | Insulation displacement connection (IDC) |
| | Blade size of operating tool | 0.6 x 3.5 mm |
| | Number of poles | 5 |
| | Conductor connection cross-section, solid, max. | 6 mm ² |
| | Conductor connection cross-section, solid, min. | 1.5 mm ² |
| | Conductor connection cross-section, stranded, max. | 6 mm ² |
| | Conductor connection cross-section, stranded, min. | 2.5 mm ² |
| | Conductor connection cross-section, finely stranded, max. | 6 mm ² |
| | Conductor connection cross-section, finely stranded, min. | 2.5 mm ² |
| | Conductor connection cross-section, finest stranded, max. | 6 mm ² |
| | Conductor connection cross-section, finest stranded, min. | 2.5 mm ² |

FP BOX FUSE R

Weidmüller Interface GmbH & Co. KG

Klingenbergstraße 26

D-32758 Detmold

Germany

www.weidmueller.com

Technical data

Connection data - contact element
Branch / Feed-in

| | | |
|---|--------------------------|---------------------------|
| Wire connection method | PUSH IN | |
| Blade size of operating tool | 0.6 x 3.5 mm | |
| Stripping length | 14 mm | |
| Number of poles | 5 | |
| Conductor connection cross-section, solid, max. | 6 mm ² | |
| Conductor connection cross-section, solid, min. | 0.5 mm ² | |
| Conductor connection cross-section, stranded, max. | 6 mm ² | |
| Conductor connection cross-section, stranded, min. | 0.5 mm ² | |
| Conductor connection cross-section, finely stranded, max. | 10 mm ² | |
| Conductor connection cross-section, finely stranded, min. | 0.5 mm ² | |
| Conductor connection cross-section, finest stranded, max. | 6 mm ² | |
| Conductor connection cross-section, finest stranded, min. | 0.5 mm ² | |
| Conductor connection cross-section with wire end ferrule | Type of wire end ferrule | 12 mm with plastic collar |
| | Standard | DIN 46228/1 |
| | Cross-section, min. | 0.5 mm ² |
| | Cross-section, max. | 6 mm ² |
| | Type of wire end ferrule | 12 mm with plastic collar |
| | Standard | DIN 46228/4 |
| | Cross-section, min. | 0.5 mm ² |
| | Cross-section, max. | 6 mm ² |
| | Type of wire end ferrule | 8 mm with plastic collar |
| | Standard | DIN 46228/1 |
| | Cross-section, min. | 0.5 mm ² |
| | Cross-section, max. | 6 mm ² |
| | Type of wire end ferrule | 8 mm with plastic collar |
| | Standard | DIN 46228/4 |
| | Cross-section, min. | 0.5 mm ² |
| | Cross-section, max. | 6 mm ² |
| | Type of wire end ferrule | Twin wire-end ferrules |
| | Cross-section, min. | 0.5 mm ² |
| | Cross-section, max. | 6 mm ² |

FP BOX FUSE R

Weidmüller Interface GmbH & Co. KG

Klingenbergstraße 26

D-32758 Detmold

Germany

www.weidmueller.com

Technical data

| | | | |
|-------------------------------------|---|--------------------------|---------------------------|
| Connection data - plug-in connector | Wire connection method | | PUSH IN |
| | Blade size of operating tool | | 3.0 x 0.5 mm |
| | Stripping length | | 12 mm |
| | Number of poles | | 5 |
| | Conductor connection cross-section, solid, max. | | 4 mm ² |
| | Conductor connection cross-section, solid, min. | | 0.5 mm ² |
| | Conductor connection cross-section, stranded, max. | | 4 mm ² |
| | Conductor connection cross-section, stranded, min. | | 0.5 mm ² |
| | Conductor connection cross-section, finely stranded, max. | | 4 mm ² |
| | Conductor connection cross-section, finely stranded, min. | | 0.5 mm ² |
| | Conductor connection cross-section, finest stranded, max. | | 4 mm ² |
| | Conductor connection cross-section, finest stranded, min. | | 0.5 mm ² |
| | Conductor connection cross-section with wire end ferrule | Type of wire end ferrule | 12 mm with plastic collar |
| | | Standard | DIN 46228/1 |
| | | Cross-section, min. | 0.5 mm ² |
| | | Cross-section, max. | 4 mm ² |
| | | Type of wire end ferrule | 12 mm with plastic collar |
| | | Standard | DIN 46228/4 |
| | | Cross-section, min. | 0.5 mm ² |
| | | Cross-section, max. | 4 mm ² |
| | | Type of wire end ferrule | 8 mm with plastic collar |
| | | Standard | DIN 46228/1 |
| | | Cross-section, min. | 0.5 mm ² |
| | | Cross-section, max. | 4 mm ² |
| | | Type of wire end ferrule | 8 mm with plastic collar |
| | | Standard | DIN 46228/4 |
| | | Cross-section, min. | 0.5 mm ² |
| | | Cross-section, max. | 4 mm ² |
| | | Type of wire end ferrule | Twin wire-end ferrules |
| | | Cross-section, min. | 0.5 mm ² |
| | | Cross-section, max. | 4 mm ² |

General data

| | | | |
|--------------------------------|--|---|--|
| Insulating material | | Enclosure material | |
| Polycarbonate | | glass-fibre reinforced polycarbonate | |
| Silicone | | Colour | |
| No | | black | |
| Protection degree | | UL 94 flammability rating | |
| IP65, in closed state | | 5VA | |
| Torque for lid screws | | Lid attachment | |
| 2 Nm | | TX20 screws | |
| Type of mounting | | Installation advice | |
| Screw mounting, Fixing lugs | | Lid screws included | |
| Function | | Can be coded | |
| Fuse | | Yes, Coded on PE | |
| Voltage type | | Number of poles | |
| 3-phase AC | | 5 | |
| Number of connections / pole | | Wire connection method | |
| 1 | | Insulation displacement connection (IDC), PUSH IN | |
| Type of connection, signal | | Cartridge fuse | |
| M12, A-coded | | 6.3 x 32 mm (1/4 x 1 1/4") | |
| Conductor outlet direction | | Failure indicator | |
| 90° | | Red LED | |
| Fuse holder (cartridge holder) | | | |
| Pivoting | | | |

Creation date May 23, 2024 6:10:42 AM CEST

FP BOX FUSE R

Weidmüller Interface GmbH & Co. KG

Klingenbergstraße 26

D-32758 Detmold

Germany

www.weidmueller.com

Technical data

Rated data acc. to IEC

| | | |
|--|---------------------------------|------------------------------|
| Rated data acc. to IEC for contact element | Voltage type | AC |
| | Number of phases | 3 |
| | Standard | IEC 60947-7-1, IEC 60947-7-2 |
| | Rated voltage | 800 V |
| | Rated impulse withstand voltage | 8 kV |
| | Rated current (3 loaded poles) | 41 A |
| Rated data acc. to IEC for fuse plug | Rated current (4 loaded poles) | 25 A |
| | Voltage type | AC |
| | Number of phases | 3 |
| | Standard | IEC 61984, IEC 60947-7-3 |
| | Rated voltage | 500 V |
| | Rated impulse withstand voltage | 6 kV |
| | Rated current | 12 A |

Rated data acc. to UL

| | | |
|---|---|-------------------------------------|
| Rated data acc. to UL for contact element | Standard | UL 1059 |
| | Note | for use with UL-listed TC-ER cables |
| | Conductor connection cross-section, AWG, max. | AWG 10 |
| | Conductor connection cross-section, AWG, min. | AWG 14 |
| | Rated voltage | 600 V |
| Rated data acc. to UL for fuse plug | Rated current | 30 A |
| | Standards | not UL approved |


Classifications

| | | | |
|-------------|-------------|-------------|-------------|
| ETIM 6.0 | EC000214 | ETIM 7.0 | EC000214 |
| ETIM 8.0 | EC000214 | ETIM 9.0 | EC000214 |
| ECLASS 9.0 | 27-14-24-09 | ECLASS 9.1 | 27-14-24-09 |
| ECLASS 10.0 | 27-14-24-09 | ECLASS 11.0 | 27-14-24-09 |
| ECLASS 12.0 | 27-14-24-09 | ECLASS 13.0 | 27-14-24-09 |

Environmental Product Compliance

| | |
|------------|---|
| REACH SVHC | Lead 7439-92-1 Potassium perfluorobutane sulfonate 29420-49-3 |
| SCIP | 7645f3b1-6db9-495d-9e21-ab1d894aff05 |

Approvals

| | |
|-----------------------|---|
| Approvals |  |
| ROHS | Conform |
| UL File Number Search | UL Website |
| Certificate No. (UL) | E310075 |

FP BOX FUSE R

Weidmüller Interface GmbH & Co. KG

Klingenbergstraße 26

D-32758 Detmold

Germany

www.weidmueller.com

Technical data

Downloads

| | |
|---|---|
| Approval/Certificate/Document of Conformity | UL Certificate FieldPower® Box Fuse Manufacturer's Declaration FieldPower® BOX, BOX FUSE and Terminal variants |
| Engineering Data | CAD data – STEP |
| User Documentation | Datasheet FieldPower® Box Fuse |
| Catalogues | Catalogues in PDF-format |

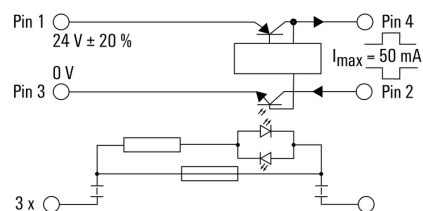
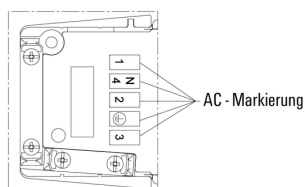
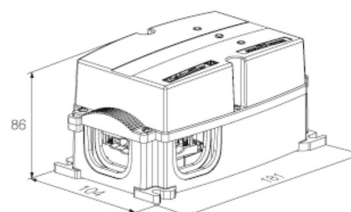
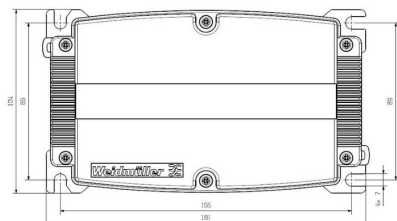
FP BOX FUSE R

Weidmüller Interface GmbH & Co. KG
Klingenbergstraße 26
D-32758 Detmold
Germany

www.weidmueller.com

Drawings

Drilling template



FP BOX FUSE R

Weidmüller Interface GmbH & Co. KG

Klingenbergstraße 26

D-32758 Detmold

Germany

www.weidmueller.com

Accessories

Slotted screwdriver



Slotted screwdriver with rounded blade SD DIN 5265, ISO 2380/2, output to DIN 5264, ISO 2380/1. ChromTop tip, SoftFinish grip

General ordering data

| | | |
|------------|----------------------------|---|
| Type | SDS 0.6X3.5X100 | Version |
| Order No. | 2749340000 | Screwdriver, Blade width (B): 3.5 mm, Blade length: 100 mm, Blade thickness (A): 0.6 mm |
| GTIN (EAN) | 4050118895568 | |
| Qty. | 1 pc(s). | |
| Type | SDS 0.5X3.0X80 | Version |
| Order No. | 2749330000 | Screwdriver, Blade width (B): 3 mm, Blade length: 80 mm, Blade thickness (A): 0.5 mm |
| GTIN (EAN) | 4050118895551 | |
| Qty. | 1 pc(s). | |

Adapters



HQ adapter for FieldPower®

Tool-free installation like a FieldPower cable seal
Suitable for the HQ 4/2, HQ 8 and HQ 17 plug-in connector inserts

Optionally with lockable protective cover (protection against being switched on again, in accordance with EN 60204-1)

General ordering data

| | | |
|------------|----------------------------|--|
| Type | BG ARGH HQP ALU PT6 CS | Version |
| Order No. | 1532210000 | Adapter, Field Power® sealing insert, HQ adapter, IP65, with corresponding enclosure, Polycarbonate, glass fibre reinforced, lockable: Yes |
| GTIN (EAN) | 4050118337600 | |
| Qty. | 1 pc(s). | |
| Type | BG ARGH HQP ALU PT6 | Version |
| Order No. | 1532200000 | Adapter, Field Power® sealing insert, HQ adapter, IP65, with corresponding enclosure, Polycarbonate, glass fibre reinforced, lockable: No |
| GTIN (EAN) | 4050118337433 | |
| Qty. | 1 pc(s). | |

FP BOX FUSE R

Weidmüller Interface GmbH & Co. KG

Klingenbergstraße 26

D-32758 Detmold

Germany

www.weidmueller.com

Accessories

DMS PRO



Weidmüller torque screwdrivers have an ergonomic design and are therefore ideal for use with one hand. They can be used without causing fatigue in all installation positions. Apart from that, they incorporate an automatic torque limiter and have a good reproducibility accuracy.

General ordering data

| | | |
|------------|----------------------------|---------------|
| Type | DMS PRO | Version |
| Order No. | 1479120000 | Mounting tool |
| GTIN (EAN) | 4050118287011 | |
| Qty. | 1 pc(s). | |

Seals


Intelligent cabling solutions can save you valuable time and money.

The FieldPower® modular system contains the right solution for every cabling task.

Foldable seals for the use of pre-assembled cables

Seals available with M16 and M20 connection thread
Integration of operating and signalling devices into the seal possible

General ordering data

| | | |
|------------|----------------------------|--|
| Type | RKDG D9 PT6 | Version |
| Order No. | 4329610000 | Field Power® sealing insert, Foldable seal, IP65 with corresponding |
| GTIN (EAN) | 4032248668687 | housing, IP65, with corresponding enclosure, EPDM |
| Qty. | 10 pc(s). | |
| Type | RKDG D17 PT6 | Version |
| Order No. | 4324010000 | Field Power® sealing insert, Foldable seal, IP65 with corresponding |
| GTIN (EAN) | 4032248641284 | housing, IP65, with corresponding enclosure, EPDM |
| Qty. | 10 pc(s). | |
| Type | RKDG 2XD8.5 WG PT6 | Version |
| Order No. | 1114530000 | Field Power® sealing insert, Seal, IP54, with corresponding enclosure, |
| GTIN (EAN) | 4032248892624 | EPDM |
| Qty. | 10 pc(s). | |
| Type | RKDG D15 PT6 | Version |
| Order No. | 4323220000 | Field Power® sealing insert, Foldable seal, IP65 with corresponding |
| GTIN (EAN) | 4032248641222 | housing, IP65, with corresponding enclosure, EPDM |
| Qty. | 10 pc(s). | |
| Type | DG M20 PT6 | Version |
| Order No. | 2545550000 | Field Power® sealing insert, Seal with connection thread, IP65, with |
| GTIN (EAN) | 4050118555530 | corresponding enclosure, EPDM |
| Qty. | 1 pc(s). | |

FP BOX FUSE R

Weidmüller Interface GmbH & Co. KG

Klingenbergstraße 26

D-32758 Detmold

Germany

www.weidmueller.com

Accessories

| | | |
|------------|----------------------------|--|
| Type | DG D0 PT6 | Version |
| Order No. | 4323240000 | Field Power® sealing insert, Blank seal, IP65, with corresponding |
| GTIN (EAN) | 4032248641246 | enclosure, EPDM |
| Qty. | 10 pc(s). | |
| Type | RKDG D13 PT6 | Version |
| Order No. | 4323230000 | Field Power® sealing insert, Foldable seal, IP65 with corresponding |
| GTIN (EAN) | 4032248641239 | housing, IP65, with corresponding enclosure, EPDM |
| Qty. | 10 pc(s). | |
| Type | RKDG D11 PT6 | Version |
| Order No. | 4323210000 | Field Power® sealing insert, Foldable seal, IP65 with corresponding |
| GTIN (EAN) | 4032248641215 | housing, IP65, with corresponding enclosure, EPDM |
| Qty. | 10 pc(s). | |
| Type | DG M16 PT6 | Version |
| Order No. | 2545540000 | Field Power® sealing insert, Seal with connection thread, IP65, with |
| GTIN (EAN) | 4050118555523 | corresponding enclosure, EPDM |
| Qty. | 1 pc(s). | |

IP68 version



In addition to the extensive range of enclosures, Weidmüller offers a variety of cable glands for a wide range of applications.

The cable glands made of brass, plastic and stainless steel meet the most various IP protection classes to suit any industrial enclosure.

Depending on the series of cable glands and the application, the cable glands are approved and tested according to VDE, UL, UR, cULus, DNV GL or EN 45545.

General ordering data

| | | |
|------------|----------------------------|---|
| Type | VG M20 - K 68 | Version |
| Order No. | 2811470000 | VG K (standard plastic cable gland), Cable glands, straight, M 20, 10 |
| GTIN (EAN) | 4064675292227 | mm, OD min. 10 - OD max. 14 mm, IP54, IP66, IP67, IP68 - 5 bar (30 |
| Qty. | 50 pc(s). | min.), Polyamide 6 |
| Type | VG M20-1/K68 | Version |
| Order No. | 1772300000 | VG K (standard plastic cable gland), Cable glands, straight, M 20, 10 |
| GTIN (EAN) | 4032248129966 | mm, OD min. 6 - OD max. 12 mm, IP54, IP66, IP67, IP68 - 5 bar (30 |
| Qty. | 50 pc(s). | min.), Polyamide 6 |

FP BOX FUSE R

Weidmüller Interface GmbH & Co. KG

Klingenbergstraße 26

D-32758 Detmold

Germany

www.weidmueller.com

Accessories

6.3x32

6.3x32

For protection against overcurrent, we offer cartridge fuse with dimensions 6.3x32 mm in sizes from 500 mA to 12.5 A.

General ordering data

| | | |
|------------|----------------------------|--|
| Type | GZ 3.0A/F | Version |
| Order No. | 1460610000 | Miniature fuse, quick-acting, 3 A, G-Si. 6.3 x 32 |
| GTIN (EAN) | 4050118266702 | |
| Qty. | 10 pc(s). | |
| Type | GZ 0.5A/F | Version |
| Order No. | 1460580000 | Miniature fuse, quick-acting, 0.5 A, G-Si. 6.3 x 32 |
| GTIN (EAN) | 4050118266603 | |
| Qty. | 10 pc(s). | |
| Type | GZ 7.0A/F | Version |
| Order No. | 1460630000 | Miniature fuse, quick-acting, 7 A, G-Si. 6.3 x 32 |
| GTIN (EAN) | 4050118266726 | |
| Qty. | 10 pc(s). | |
| Type | GZ 10.0A/F | Version |
| Order No. | 1460640000 | Miniature fuse, quick-acting, 10 A, G-Si. 6.3 x 32 |
| GTIN (EAN) | 4050118266801 | |
| Qty. | 10 pc(s). | |
| Type | GZ 1.0A/F | Version |
| Order No. | 1460590000 | Miniature fuse, quick-acting, 1 A, G-Si. 6.3 x 32 |
| GTIN (EAN) | 4050118266634 | |
| Qty. | 10 pc(s). | |
| Type | GZ 2.0A/F | Version |
| Order No. | 1460600000 | Miniature fuse, quick-acting, 2 A, G-Si. 6.3 x 32 |
| GTIN (EAN) | 4050118266719 | |
| Qty. | 10 pc(s). | |
| Type | GZ 12.5A/F | Version |
| Order No. | 1460650000 | Miniature fuse, quick-acting, 12.5 A, G-Si. 6.3 x 32 |
| GTIN (EAN) | 4050118266627 | |
| Qty. | 10 pc(s). | |
| Type | GZ 5.0A/F | Version |
| Order No. | 1460620000 | Miniature fuse, quick-acting, 5 A, G-Si. 6.3 x 32 |
| GTIN (EAN) | 4050118266610 | |
| Qty. | 10 pc(s). | |

FP BOX FUSE R

Weidmüller Interface GmbH & Co. KG

Klingenbergstraße 26

D-32758 Detmold

Germany

www.weidmueller.com

Accessories

Plastic lock nuts, grey



In addition to cable glands for a wide range of applications, the product portfolio is rounded off by plugs, pressure compensation elements, adaptors and the corresponding accessories such as locknuts, sealing rings, flat washers and earthing rings.

General ordering data

| Type | SKMU M20 - K GR | Version |
|------------|----------------------------|---|
| Order No. | 1772460000 | SKMU PA (plastic locknut), Locknut, M 20, 6 mm, Polyamid 6 (PA6 - |
| GTIN (EAN) | 4032248130207 | GF30) |
| Qty. | 100 pc(s). | |

Bits E6,3 - Torx®



The Weidmüller bits are standard bits which are highly popular with users thanks to their good quality, large range and efficiency. The computer-controlled hardening method enables Weidmüller to guarantee a consistently high standard of quality.

The high-quality raw materials used make it possible to reach torques far higher than any of those specified in the relevant DIN standards:

- DIN 5261 for PH/PZ bits,
- DIN 5263 for slotted bits,
- Camcar standard for TORX bits

That means a long life at high torques and hence ideal conditions for standard situations.

The benefits:

- Suitable for all types of screws. Because of their excellent hardness values of 59-61 HRC, they are suitable for use with both manual and power tools.
- Good wearing resistance and thus a long life expectancy.
- Optimum fit in all DIN screws means low wear and optimum torque transmission.
- Manufactured to meet professional quality criteria according to relevant ISO standards with a consistently high standard of quality.

General ordering data

| Type | BIT E6,3 T20 X 70 | Version |
|------------|----------------------------|--------------------|
| Order No. | 2749010000 | Screwdriver insert |
| GTIN (EAN) | 4050118895308 | |
| Qty. | 5 pc(s). | |

FP BOX FUSE R**Weidmüller Interface GmbH & Co. KG**

Klingenbergstraße 26

D-32758 Detmold

Germany

www.weidmueller.com**Accessories****Tools**

Sheathing stripper for PVC cables

**General ordering data**

| | | |
|------------|----------------------------|----------------------------|
| Type | AM 16 | Version |
| Order No. | 9204190000 | Tools, Sheathing strippers |
| GTIN (EAN) | 4032248608133 | |
| Qty. | 1 pc(s). | |
| Type | AM 25 | Version |
| Order No. | 9001540000 | Tools, Sheathing strippers |
| GTIN (EAN) | 4008190138271 | |
| Qty. | 1 pc(s). | |