

MOFU 35/LO/1 SW**Weidmüller Interface GmbH & Co. KG**

Klingenbergstraße 26

D-32758 Detmold

Germany

www.weidmueller.com**Product image**

Mounting feet are used to mount components that cannot be snapped directly on a DIN rail.

General ordering data

| Version | Mounting foot (terminal) |
|------------|----------------------------|
| Order No. | 0646210000 |
| Type | MOFU 35/LO/1 SW |
| GTIN (EAN) | 4008190261887 |
| Qty. | 20 pc(s). |

MOFU 35/LO/1 SW**Weidmüller Interface GmbH & Co. KG**

Klingenbergstraße 26

D-32758 Detmold

Germany

www.weidmueller.com

Technical data**Dimensions and weights**

| | | | |
|------------|----------|-----------------|------------|
| Depth | 18.35 mm | Depth (inches) | 0.722 inch |
| Height | 58 mm | Height (inches) | 2.283 inch |
| Width | 18 mm | Width (inches) | 0.709 inch |
| Net weight | 5.6 g | | |

Temperatures

| | | | |
|----------------------------------|--------|----------------------------------|--------|
| Continuous operating temp., min. | -50 °C | Continuous operating temp., max. | 100 °C |
|----------------------------------|--------|----------------------------------|--------|

Material data

| | | | |
|----------|--------------|---------------------------|-------|
| Material | Polyamide 66 | Insulating material | Wemid |
| Colour | black | UL 94 flammability rating | V-2 |

System specifications

| | | | |
|---------|---------------|--------------------------|----|
| Version | Mounting foot | End cover plate required | No |
| Rail | TS 35 | | |

Additional technical data

| | | | |
|--------------------------|---------|------------------|---------|
| Explosion-tested version | No | Open sides | right |
| Type of fixing | Snap-on | Type of mounting | Snap-on |

Conductors for clamping (rated connection)

| | | | |
|----------------------|-----|--------------------|--------------------------|
| Connection direction | top | Type of connection | Tension-clamp connection |
|----------------------|-----|--------------------|--------------------------|

Dimensions

| | |
|-----------------|-------|
| Pitch in mm (P) | 18 mm |
|-----------------|-------|

General

| | |
|------|-------|
| Rail | TS 35 |
|------|-------|

Classifications

| | | | |
|-------------|-------------|-------------|-------------|
| ETIM 6.0 | EC002848 | ETIM 7.0 | EC002848 |
| ETIM 8.0 | EC002848 | ETIM 9.0 | EC002848 |
| ECLASS 9.0 | 27-14-11-92 | ECLASS 9.1 | 27-14-11-92 |
| ECLASS 10.0 | 27-14-11-92 | ECLASS 11.0 | 27-14-11-92 |
| ECLASS 12.0 | 27-14-11-92 | ECLASS 13.0 | 27-25-03-90 |

Approvals

| | |
|------|---------|
| ROHS | Conform |
|------|---------|

Downloads

| | |
|--------------------|---|
| Engineering Data | CAD data – STEP |
| User Documentation | StorageConditionsTerminalBlocks |
| Catalogues | Catalogues in PDF-format |
| Brochures | |

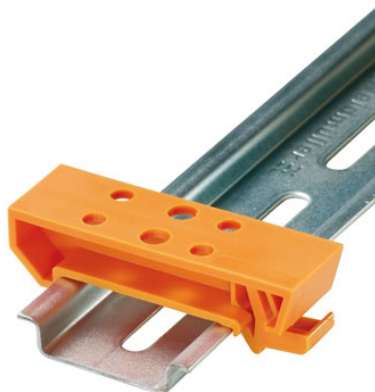
MOFU 35/LO/1 SW

Weidmüller Interface GmbH & Co. KG
Klingenbergstraße 26
D-32758 Detmold
Germany

www.weidmueller.com

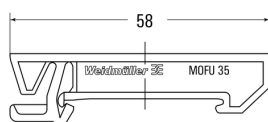
Drawings

Product image



Similar to illustration

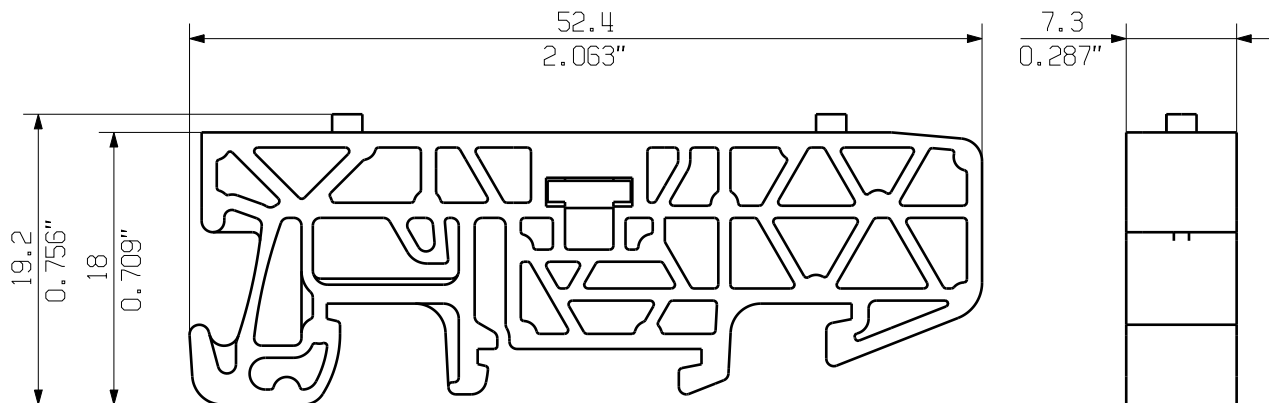
Example of use



MASSE OHNE TOLERANZ SIND KEINE PRUEFFMASSE
DIMS. WITHOUT TOLERANCE ARE NOT CONTROL DIMS.

DIE DEUTSCHE VERSION IST VERBINDLICH
THE GERMAN VERSION IS BINDING

ALLGEMEINGUELTIGE KUNDENZEICHNUNG, AKTUELLER STAND NUR AUF ANFRAGE
GENERAL CUSTOMER DRAWING, TOPICAL VERSION ONLY IF REQUIRED



M 1/1



GENERAL TOLERANCE:
DIN ISO 2768-mK



MAX. NRN./NOS.

84373/5
29.09.15
GUETZLAFF_T
MODIFICATION

01

Weidmüller

CAT.NO.: 1937600000

4 42839 02

DRAWING NO. ISSUE NO.
SHEET 01 OF 01 SHEETS



| | DATE | NAME |
|-------------|------------|-----------|
| DRAWN | 24.02.2006 | NEUMANN_G |
| RESPONSIBLE | | KRUG_M |
| CHECKED | 02.10.2015 | LANG_T |
| APPROVED | | LANG_T |

BV/SV 7.62HP MOFU GR
MONTAGEFUSS
SNAP ON FOOT

SCALE: 2/1

SUPERSEDES: .

PRODUCT FILE: SV/BV 7.62 HP

7340