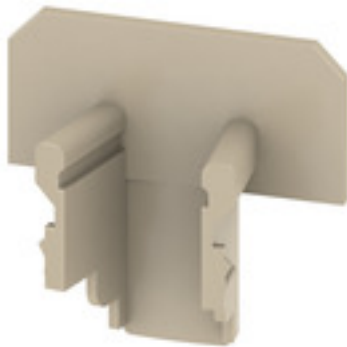


**TSCH 4 AKZ4****Weidmüller Interface GmbH & Co. KG**

Klingenbergstraße 26

D-32758 Detmold

Germany

[www.weidmueller.com](http://www.weidmueller.com)**Product image**

A partition plate is used for the optical separation of circuits or used for electrical isolation from neighbouring cross-connectors. In contrast to the end plate, the contour can be larger than the adjacent terminal blocks. However, it should not be smaller, as otherwise the required clearance and creepage distances within the application can no longer be maintained.

**General ordering data**

Version	Small partition (terminal), PA 66, beige, Continuous operating temp., max.: 100 °C
Order No.	<a href="#">0363360000</a>
Type	TSCH 4 AKZ4
GTIN (EAN)	4008190136680
Qty.	100 pc(s).

**TSCH 4 AKZ4****Weidmüller Interface GmbH & Co. KG**

Klingenbergstraße 26

D-32758 Detmold

Germany

[www.weidmueller.com](http://www.weidmueller.com)**Technical data****Dimensions and weights**

Depth	15 mm	Depth (inches)	0.591 inch
Height	16 mm	Height (inches)	0.63 inch
Width	6 mm	Width (inches)	0.236 inch
Net weight	0.181 g		

**Temperatures**

Storage temperature	-25 °C...55 °C	Continuous operating temp., min.	-50 °C
Continuous operating temp., max.	100 °C		

**Material data**

Material	PA 66	Colour	beige
UL 94 flammability rating	V-2		

**System specifications**

Version	End and intermediate plate
---------	----------------------------

**Additional technical data**

Installation advice	Direct mounting	Snap-on	Yes
---------------------	-----------------	---------	-----

**General**

Installation advice	Direct mounting
---------------------	-----------------

**Classifications**

ETIM 6.0	EC000886	ETIM 7.0	EC000886
ETIM 8.0	EC000886	ETIM 9.0	EC000886
ECLASS 9.0	27-14-11-92	ECLASS 9.1	27-14-11-33
ECLASS 10.0	27-14-11-92	ECLASS 11.0	27-14-11-92
ECLASS 12.0	27-14-11-92	ECLASS 13.0	27-25-03-01

**Environmental Product Compliance**

REACH SVHC	/
RoHS Compliance Status	Compliant without exemption

**Approvals**

ROHS	Conform
------	---------

**Downloads**

User Documentation	<a href="#">StorageConditionsTerminalBlocks</a>
Catalogues	<a href="#">Catalogues in PDF-format</a>