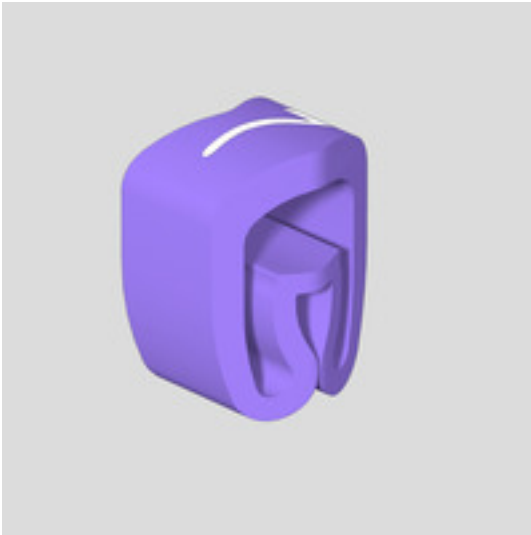


**CLI C 1-3 VI/WS 7 MP****Weidmüller Interface GmbH & Co. KG**

Klingenbergstraße 26

D-32758 Detmold

Germany

[www.weidmueller.com](http://www.weidmueller.com)

CLI C conductor markers are mounted on unconnected conductors. Four different sizes are available for labelling conductor cross-sections from 0.5 mm<sup>2</sup> to max. 70 mm<sup>2</sup>. The markers are already printed and ready for use. Individual labelling is possible by combining the individual markers.

- Closed markers, reliable and for mounting on unconnected cables
- A special flexible bellow profile ensures a wide application range
- Fast and easy to fit – with minimal effort
- Corresponding accessories make labelling easy
- Permanent, high-quality labelling
- High contrast for optimum legibility

**General ordering data**

Version	CableLine, Conductor and cable markers, 2.5 - 5 mm, 3 x 4.2 mm, violet
Order No.	<a href="#">0252611524</a>
Type	CLI C 1-3 VI/WS 7 MP
GTIN (EAN)	4032248005376
Qty.	200 pc(s).

## CLI C 1-3 VI/WS 7 MP

Weidmüller Interface GmbH &amp; Co. KG

Klingenbergstraße 26

D-32758 Detmold

Germany

www.weidmueller.com

## Technical data

## Dimensions and weights

Depth	5 mm	Depth (inches)	0.197 inch
Height	3 mm	Height (inches)	0.118 inch
Width	4.2 mm	Width (inches)	0.165 inch
Net weight	0.06 g		

## Temperatures

Operating temperature range	-30...80 °C
-----------------------------	-------------

## General data

Colour	violet	
Colour of printing	white	
Halogen	Yes	
Insulation cross-section, max.	5	
Material	PVC, soft, without Cadmium	
Material colour according to resistance code	7	
Number of markers per combination	1 Component part = Conductor and cable markers	
Number of markers per packaging unit	Form of supply	Component part
Operating temperature range	-30...80 °C	
Operating temperature range, max.	80 °C	
Operating temperature range, min.	-30 °C	
Orientation of print	horizontal	
Printed characters	Numbers	
Printing	7	
Printing method	hot-embossing	
Recommended industries	Process, Machinery	
Type of printing	Standard	
UL 94 flammability rating	V-0	
Version	MultiPack	
Width	4.2 mm	

## Conductor and cable markers

Conductor O.D.	2.5 - 5 mm	Conductor O.D., max.	5 mm
Conductor O.D., min.	2.5 mm	Conductor cross-section, max.	4 mm <sup>2</sup>
Conductor cross-section, min.	1.5 mm <sup>2</sup>	Cross-section for connected wire	1.5 - 4 mm <sup>2</sup>
Halogen	Yes		

## Classifications

ETIM 6.0	EC001530	ETIM 7.0	EC001530
ETIM 8.0	EC001530	ETIM 9.0	EC001530
ECLASS 9.0	27-40-04-01	ECLASS 9.1	27-40-04-01
ECLASS 10.0	27-40-04-01	ECLASS 11.0	27-28-11-02
ECLASS 12.0	27-28-11-02	ECLASS 13.0	27-28-11-02

## Approvals

ROHS	Conform
------	---------

### CLI C 1-3 VI/WS 7 MP

**Weidmüller Interface GmbH & Co. KG**

Klingenbergstraße 26

D-32758 Detmold

Germany

[www.weidmueller.com](http://www.weidmueller.com)

## Technical data

### Downloads

Product Change Notification

[PCN CableLine\\_DE](#)

[PCN CableLine\\_EN](#)

Catalogues

[Catalogues in PDF-format](#)

## CLI C 1-3 VI/WS 7 MP

Weidmüller Interface GmbH &amp; Co. KG

Klingenbergstraße 26

D-32758 Detmold

Germany

www.weidmueller.com

## Accessories

## Miscellaneous



The CableLine range of wire and cable marker products provides users with solutions for the most diverse applications. The range of applications extends from narrow wires right up to cables with large outside diameters.

## General ordering data

Type	CLI R 1-3 BL/WS -	Version
Order No.	<a href="#">0572901741</a>	CableLine, Mounting mandrel
GTIN (EAN)	4008190119959	
Qty.	10 pc(s).	
Type	CLI R 1-3 RT/WS +	Version
Order No.	<a href="#">0572901739</a>	CableLine, Mounting mandrel
GTIN (EAN)	4008190013691	
Qty.	10 pc(s).	

## Special characters



The CableLine range of wire and cable marker products provides users with solutions for the most diverse applications. The range of applications extends from narrow wires right up to cables with large outside diameters.

## General ordering data

Type	CLI R 1-3 GE/SW .	Version
Order No.	<a href="#">0572901749</a>	CableLine, Mounting mandrel
GTIN (EAN)	4008190043339	
Qty.	10 pc(s).	
Type	CLI R 1-3 GE/SW /	Version
Order No.	<a href="#">0572901743</a>	CableLine, Mounting mandrel
GTIN (EAN)	4008190137434	
Qty.	10 pc(s).	
Type	CLI R 1-3 GE/SW +	Version
Order No.	<a href="#">0572901738</a>	CableLine, Mounting mandrel
GTIN (EAN)	4032248307340	
Qty.	10 pc(s).	
Type	CLI R 1-3 GE/SW -	Version
Order No.	<a href="#">0572901740</a>	CableLine, Mounting mandrel
GTIN (EAN)	4032248106691	
Qty.	10 pc(s).	

**CLI C 1-3 VI/WS 7 MP****Weidmüller Interface GmbH & Co. KG**

Klingenbergstraße 26

D-32758 Detmold

Germany

[www.weidmueller.com](http://www.weidmueller.com)**Accessories**

Type	CLI R 1-3 GE/SW ET	Version
Order No.	<a href="#">0572901745</a>	CableLine, Mounting mandrel
GTIN (EAN)	4008190163983	
Qty.	10 pc(s).	

**A - Z**

The CableLine range of wire and cable marker products provides users with solutions for the most diverse applications. The range of applications extends from narrow wires right up to cables with large outside diameters.

**General ordering data**

Type	CLI R 1-3 GE/SW J	Version
Order No.	<a href="#">0572901656</a>	CableLine, Mounting mandrel
GTIN (EAN)	4008190124427	
Qty.	10 pc(s).	
Type	CLI R 1-3 GE/SW Z	Version
Order No.	<a href="#">0572901699</a>	CableLine, Mounting mandrel
GTIN (EAN)	4008190142681	
Qty.	10 pc(s).	
Type	CLI R 1-3 GE/SW P	Version
Order No.	<a href="#">0572901668</a>	CableLine, Mounting mandrel
GTIN (EAN)	4008190079833	
Qty.	10 pc(s).	
Type	CLI R 1-3 GE/SW M	Version
Order No.	<a href="#">0572901662</a>	CableLine, Mounting mandrel
GTIN (EAN)	4008190119195	
Qty.	10 pc(s).	
Type	CLI R 1-3 GE/SW G	Version
Order No.	<a href="#">0572901650</a>	CableLine, Mounting mandrel
GTIN (EAN)	4008190011390	
Qty.	10 pc(s).	
Type	CLI R 1-3 GE/SW K	Version
Order No.	<a href="#">0572901658</a>	CableLine, Mounting mandrel
GTIN (EAN)	4008190036614	
Qty.	10 pc(s).	
Type	CLI R 1-3 GE/SW O	Version
Order No.	<a href="#">0572901666</a>	CableLine, Mounting mandrel
GTIN (EAN)	4008190099855	
Qty.	10 pc(s).	
Type	CLI R 1-3 GE/SW A	Version
Order No.	<a href="#">0572901638</a>	CableLine, Mounting mandrel
GTIN (EAN)	4008190184278	
Qty.	10 pc(s).	

## CLI C 1-3 VI/WS 7 MP

Weidmüller Interface GmbH &amp; Co. KG

Klingenbergstraße 26

D-32758 Detmold

Germany

www.weidmueller.com

## Accessories

Type	CLI R 1-3 GE/SW E	Version
Order No.	<a href="#">0572901646</a>	CableLine, Mounting mandrel
GTIN (EAN)	4008190039738	
Qty.	10 pc(s).	
Type	CLI R 1-3 GE/SW F	Version
Order No.	<a href="#">0572901648</a>	CableLine, Mounting mandrel
GTIN (EAN)	4008190147716	
Qty.	10 pc(s).	
Type	CLI R 1-3 GE/SW Y	Version
Order No.	<a href="#">0572901697</a>	CableLine, Mounting mandrel
GTIN (EAN)	4008190140359	
Qty.	10 pc(s).	
Type	CLI R 1-3 GE/SW U	Version
Order No.	<a href="#">0572901680</a>	CableLine, Mounting mandrel
GTIN (EAN)	4008190007133	
Qty.	10 pc(s).	
Type	CLI R 1-3 GE/SW R	Version
Order No.	<a href="#">0572901672</a>	CableLine, Mounting mandrel
GTIN (EAN)	4008190149277	
Qty.	10 pc(s).	
Type	CLI R 1-3 GE/SW B	Version
Order No.	<a href="#">0572901640</a>	CableLine, Mounting mandrel
GTIN (EAN)	4008190057442	
Qty.	10 pc(s).	
Type	CLI R 1-3 GE/SW Q	Version
Order No.	<a href="#">0572901670</a>	CableLine, Mounting mandrel
GTIN (EAN)	4008190081102	
Qty.	10 pc(s).	
Type	CLI R 1-3 GE/SW X	Version
Order No.	<a href="#">0572901693</a>	CableLine, Mounting mandrel
GTIN (EAN)	4008190115142	
Qty.	10 pc(s).	
Type	CLI R 1-3 GE/SW T	Version
Order No.	<a href="#">0572901678</a>	CableLine, Mounting mandrel
GTIN (EAN)	4008190014698	
Qty.	10 pc(s).	
Type	CLI R 1-3 GE/SW I	Version
Order No.	<a href="#">0572901654</a>	CableLine, Mounting mandrel
GTIN (EAN)	4008190029647	
Qty.	10 pc(s).	
Type	CLI R 1-3 GE/SW V	Version
Order No.	<a href="#">0572901682</a>	CableLine, Mounting mandrel
GTIN (EAN)	4008190106751	
Qty.	10 pc(s).	
Type	CLI R 1-3 GE/SW S	Version
Order No.	<a href="#">0572901675</a>	CableLine, Mounting mandrel
GTIN (EAN)	4008190055004	
Qty.	10 pc(s).	
Type	CLI R 1-3 GE/SW H	Version
Order No.	<a href="#">0572901652</a>	CableLine, Mounting mandrel
GTIN (EAN)	4008190170288	
Qty.	10 pc(s).	

Creation date June 5, 2024 2:06:07 AM CEST

Catalogue status 01.06.2024 / We reserve the right to make technical changes.

## CLI C 1-3 VI/WS 7 MP

Weidmüller Interface GmbH &amp; Co. KG

Klingenbergstraße 26

D-32758 Detmold

Germany

www.weidmueller.com

## Accessories

Type	CLI R 1-3 GE/SW L	Version
Order No.	<a href="#">0572901660</a>	CableLine, Mounting mandrel
GTIN (EAN)	4008190082628	
Qty.	10 pc(s).	
Type	CLI R 1-3 GE/SW W	Version
Order No.	<a href="#">0572901684</a>	CableLine, Mounting mandrel
GTIN (EAN)	4008190060046	
Qty.	10 pc(s).	
Type	CLI R 1-3 GE/SW D	Version
Order No.	<a href="#">0572901644</a>	CableLine, Mounting mandrel
GTIN (EAN)	4008190012601	
Qty.	10 pc(s).	
Type	CLI R 1-3 GE/SW N	Version
Order No.	<a href="#">0572901664</a>	CableLine, Mounting mandrel
GTIN (EAN)	4008190163884	
Qty.	10 pc(s).	
Type	CLI R 1-3 GE/SW C	Version
Order No.	<a href="#">0572901642</a>	CableLine, Mounting mandrel
GTIN (EAN)	4008190184681	
Qty.	10 pc(s).	

## 0 - 9



The CableLine range of wire and cable marker products provides users with solutions for the most diverse applications. The range of applications extends from narrow wires right up to cables with large outside diameters.

## General ordering data

Type	CLI R 1-3 GE/SW 8	Version
Order No.	<a href="#">0572901527</a>	CableLine, Mounting mandrel
GTIN (EAN)	4008190135003	
Qty.	10 pc(s).	
Type	CLI R 1-3 GE/SW 3	Version
Order No.	<a href="#">0572901512</a>	CableLine, Mounting mandrel
GTIN (EAN)	4008190168728	
Qty.	10 pc(s).	
Type	CLI R 1-3 GE/SW 5	Version
Order No.	<a href="#">0572901518</a>	CableLine, Mounting mandrel
GTIN (EAN)	4008190064945	
Qty.	10 pc(s).	
Type	CLI R 1-3 GE/SW 4	Version
Order No.	<a href="#">0572901515</a>	CableLine, Mounting mandrel
GTIN (EAN)	4008190090722	
Qty.	10 pc(s).	

## CLI C 1-3 VI/WS 7 MP

Weidmüller Interface GmbH &amp; Co. KG

Klingenbergstraße 26

D-32758 Detmold

Germany

www.weidmueller.com

## Accessories

Type	CLI R 1-3 GE/SW 6	Version
Order No.	<a href="#">0572901521</a>	CableLine, Mounting mandrel
GTIN (EAN)	4008190116446	
Qty.	10 pc(s).	
Type	CLI R 1-3 GE/SW 7	Version
Order No.	<a href="#">0572901524</a>	CableLine, Mounting mandrel
GTIN (EAN)	4008190003470	
Qty.	10 pc(s).	
Type	CLI R 1-3 GE/SW 9	Version
Order No.	<a href="#">0572901530</a>	CableLine, Mounting mandrel
GTIN (EAN)	4008190112967	
Qty.	10 pc(s).	
Type	CLI R 1-3 GE/SW 0	Version
Order No.	<a href="#">0572901503</a>	CableLine, Mounting mandrel
GTIN (EAN)	4008190081218	
Qty.	10 pc(s).	
Type	CLI R 1-3 GE/SW 2	Version
Order No.	<a href="#">0572901509</a>	CableLine, Mounting mandrel
GTIN (EAN)	4008190044916	
Qty.	10 pc(s).	
Type	CLI R 1-3 GE/SW 1	Version
Order No.	<a href="#">0572901506</a>	CableLine, Mounting mandrel
GTIN (EAN)	4008190036072	
Qty.	10 pc(s).	

## Mandrels single



The CableLine range of wire and cable marker products provides users with solutions for the most diverse applications. The range of applications extends from narrow wires right up to cables with large outside diameters.

## General ordering data

Type	CLI R 1 F. CLI C 1-3	Version
Order No.	<a href="#">0532100000</a>	CableLine, Mounting mandrel
GTIN (EAN)	4008190092191	
Qty.	20 pc(s).	