

ACT20P-CML-10-AO-RC-S**Weidmüller Interface GmbH & Co. KG**

Klingenbergstraße 26

D-32758 Detmold

Germany

www.weidmueller.com**Product image****ACT20P: The flexible solution**

- Precise and highly functional signal converters
- Release levers simplify handling

General ordering data

Version	Current-measuring transducer, Limit value monitoring, Input : 0...1/5/10 A, Analogue output, Relay output
Order No.	2044850000
Type	ACT20P-CML-10-AO-RC-S
GTIN (EAN)	4050118409680
Qty.	1 pc(s).

ACT20P-CML-10-AO-RC-S**Weidmüller Interface GmbH & Co. KG**

Klingenbergstraße 26

D-32758 Detmold

Germany

www.weidmueller.com

Technical data**Dimensions and weights**

Depth	113.6 mm	Depth (inches)	4.472 inch
Height	119.2 mm	Height (inches)	4.693 inch
Width	17.5 mm	Width (inches)	0.689 inch
Net weight	141 g		

Temperatures

Storage temperature	-40 °C...85 °C	Operating temperature	-25 °C...60 °C
Humidity	5...95 %, no condensation		

Probability of failure

MTTF	130 a
------	-------

Input

Input frequency		Input measurement range	configurable, 0...1/5/10 A AC (RMS) or DC, max. peak current $10 \times I_{\text{Input}}$ (1 s), For DC current measurement (AA): Current direction display at the output (-/+ analog value)
	AC: 15...400 Hz (true root mean square)		
Number of inputs	1	Overload behaviour	Max. peak current: $10 \times I_{\text{Input}}$ for 1 s

Output

Load impedance current	$\leq 600 \, \Omega$	Type	active, connected control must be passive
------------------------	----------------------	------	---

Output (digital)

Alarm function	Surge current, Under-current, Alarm limit setting: 2 - 105 %, Hysteresis 5% / 10%, Alarm delay: 0...10 s	Continuous current	$2 \times I_{\text{Input}}$
Max. switching frequency	20 Hz	Max. switching voltage, AC	250 V
Max. switching voltage, DC	24 V	Number of digital outputs	1
Rated switching current	2 A	Type	Relay, 1 CO contact, normal / inverse adjustment

Output (analogue)

Load resistance current	$\leq 600 \, \Omega$	Load resistance voltage	$\geq 10 \, \text{k}\Omega$
Number of analogue outputs	1	Output current	Adjustable, 0...20 mA, 4...20 mA, -20...+20 mA
Output voltage	Adjustable, 0...10 V, 2...10 V, 0...5 V, 1...5 V, -5...+5 V, -10...+10 V	Transmit function	direct or inverted
Type (analogue output)	Voltage and current output (configurable)		

ACT20P-CML-10-AO-RC-S

Weidmüller Interface GmbH & Co. KG
Klingenbergstraße 26
D-32758 Detmold
Germany

www.weidmueller.com

Technical data

General data

Accuracy	$\leq \pm 0.3\% @ 1\text{ A} / 5\text{ A}, \leq \pm 0.6\% @ 10\text{ A}$	Configuration	DIP switch and potentiometer
Galvanic isolation	4-way isolator, between input / output / supply / relay	Power consumption, max.	2.2 W
Rail	TS 35	Step response time	$\leq 300\text{ ms (RMS)}, \leq 60\text{ ms (AA)}$
Temperature coefficient	$\leq \pm 100\text{ ppm/K @ }-25\text{...}+55\text{ }^\circ\text{C}, \leq \pm 200\text{ ppm/K @ }+55\text{...}+70\text{ }^\circ\text{C}$	Voltage supply	16.8 V...31.2 V

Insulation coordination

EMC standards	EN 61326-1	Galvanic isolation	4-way isolator, between input / output / supply / relay
Impulse withstand voltage	6 kV (1.2/50 μs)	Insulation voltage	4 kV _{eff} / 1 min.
Pollution severity	2	Rated voltage	300 V AC _{rms}
Surge voltage category	III	Test voltage	4 kV

Connection data

Type of connection	Screw connection	Tightening torque, min.	0.4 Nm
Tightening torque, max.	0.6 Nm	Clamping range, rated connection	1.5 mm ²
Clamping range, min.	0.5 mm ²	Clamping range, max.	2.5 mm ²
Wire connection cross section AWG, min.	AWG 26	Wire connection cross section AWG, max.	AWG 12

Classifications

ETIM 6.0	EC002475	ETIM 7.0	EC002475
ETIM 8.0	EC002475	ETIM 9.0	EC002475
ECLASS 9.0	27-21-01-23	ECLASS 9.1	27-21-01-23
ECLASS 10.0	27-21-01-23	ECLASS 11.0	27-21-01-23
ECLASS 12.0	27-21-01-23	ECLASS 13.0	27-21-01-23

Environmental Product Compliance

REACH SVHC	Lead 7439-92-1
SCIP	2f6dd957-421a-46db-a0c2-cf1609156924

Important note

Product information	<p>The device ACT20P-CML-10-AO-RC-S measures and monitors AC and DC currents of up to 10 A. The real effective value method used allows for precise measurement, even for distorted current curve shapes. The device features an integrated limit value monitoring function with an adjustable switching threshold, lag and hysteresis, as well as a relay output.</p> <p>Features</p> <ul style="list-style-type: none"> • Real effective value measurement (True RMS) or arithmetic averaging (AA) measurement • Limit value monitoring for overcurrent or undercurrent • Relay output by means of the open-circuit / closed-circuit principle • Adjustable trigger delay for filtering current peaks • Operational status and error display on a front panel LED and output signalling according to NE43, NE44, NE107 • Galvanic four-way insulation for secure isolation according to IEC/EN 61010-2-201
---------------------	--

ACT20P-CML-10-AO-RC-S

Weidmüller Interface GmbH & Co. KG
Klingenbergstraße 26
D-32758 Detmold
Germany

www.weidmueller.com

Technical data

Approvals

Approvals



ROHS	Conform
UL File Number Search	UL Website
Certificate no. (cULus)	E141197

Downloads

Approval/Certificate/Document of Conformity	Certification DNV GL Certification UL Declaration of Conformity
Engineering Data	CAD data – STEP
Software	DIP switch configuration tool
User Documentation	instruction sheet
Catalogues	Catalogues in PDF-format

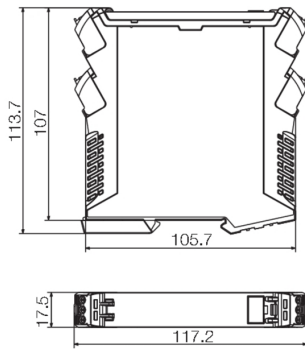
ACT20P-CML-10-AO-RC-S

Weidmüller Interface GmbH & Co. KG
 Klingenbergstraße 26
 D-32758 Detmold
 Germany

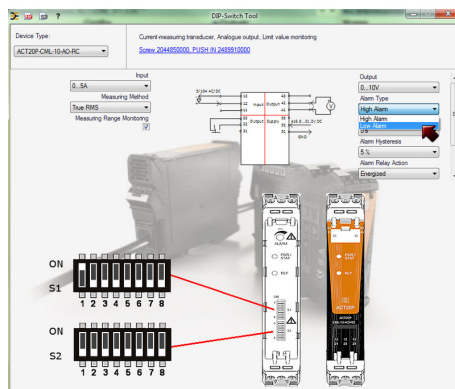
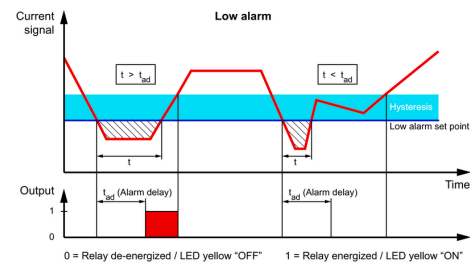
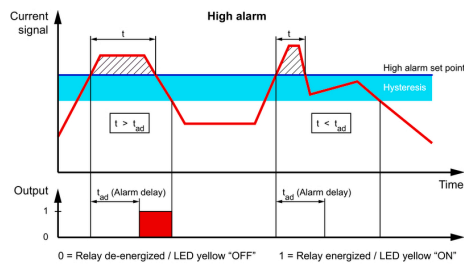
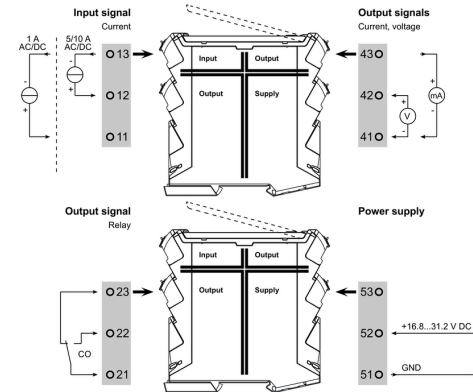
www.weidmueller.com

Drawings

Dimensioned drawing



Connection diagram



Configuration

DIP switch S1							
Current input range	1	2	3	4	5	6	7
0...1 A							
0...5 A							
0...10 A							
Measuring method	1	2	3	4	5	6	7
True RMS							
Arithmetic average							
Alarm delay time	1	2	3	4	5	6	7
0 s							
2 s							
5 s							
10 s							
Measuring range monitoring	1	2	3	4	5	6	7
Yes							
No							
Output error action	1	2	3	4	5	6	7
Upscale							
Downscale							
Transfer function	1	2	3	4	5	6	7
Normal							
Inverse							

DIP switch S2							
Output range	1	2	3	4	5	6	7
0...10 V							
2...10 V							
0...5 V							
1...5 V							
-5...+5 V							
-10...+10 V							
0...20 mA							
4...20 mA							
-20...+20 mA							
Alarm relay action	1	2	3	4	5	6	7
Energized							
De-energized							
Alarm hysteresis	1	2	3	4	5	6	7
5 %							
10 %							
Alarm type	1	2	3	4	5	6	7
High alarm							
Low alarm							

example for DIP switch setting (with ACT20 tool)

ACT20P-CML-10-AO-RC-S**Weidmüller Interface GmbH & Co. KG**

Klingenbergstraße 26

D-32758 Detmold

Germany

www.weidmueller.com**Accessories****Blank**

ESG is the tried-and-tested marker in MultiCard format for use on many well-known electrical devices. The result is high-quality device marking with a high-contrast appearance.

Various types are available for devices from manufacturers like Siemens, ABB, Beckhoff etc.

Advantages at a glance:

- Tags for universal usage, self-adhesive or clip-on tags, depending on type
- For aligned equipment, e.g. circuit breakers, we supply ESG markers for clipping onto tag rails
- Individual laser-quality printing according to specifications

For custom printing: Please send us a file of our labeling software M-Print PRO or M-Print PRO Online (without installation) for your labeling specifications.

General ordering data

Type	ESG 8/13.5/43.3 SAI AU	Version
Order No.	1912130000	ESG, Device markers x 13.5 mm, PA 66, Colour: Transparent
GTIN (EAN)	4032248541164	
Qty.	5 pc(s).	

ACT20P-CML-10-AO-RC-S**Weidmüller Interface GmbH & Co. KG**

Klingenbergstraße 26

D-32758 Detmold

Germany

www.weidmueller.com**Accessories****Blank**

ESG is the tried-and-tested marker in MultiCard format for use on many well-known electrical devices. The result is high-quality device marking with a high-contrast appearance.

Various types are available for devices from manufacturers like Siemens, ABB, Beckhoff etc.

Advantages at a glance:

- Tags for universal usage, self-adhesive or clip-on tags, depending on type
- For aligned equipment, e.g. circuit breakers, we supply ESG markers for clipping onto tag rails
- Individual laser-quality printing according to specifications

For custom printing: Please send us a file of our labeling software M-Print PRO or M-Print PRO Online (without installation) for your labeling specifications.

General ordering data

Type	ESG 6.6/15 BHZ 5.00/03	Version
Order No.	1082520000	ESG, Device markers x 15 mm, PA 66, Colour: white
GTIN (EAN)	4032248845323	
Qty.	200 pc(s).	