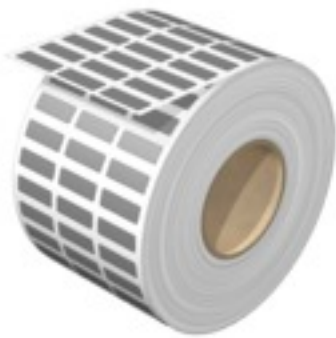


ESG 6/17 MM GR**Weidmüller Interface GmbH & Co. KG**

Klingenbergstraße 26

D-32758 Detmold

Germany

www.weidmueller.com**Guaranteed long service life: ESG**

The multi-colour and multi-format labels have a strong adhesive layer to ensure the best possible adhesion to the underlying surface. Double laminated polyester makes the basic material very thin and yet extremely tear-resistant.

Your benefits with MultiMark

- “Different materials for various requirements”
- Can be used with equipment from many manufacturers
- Device markers with a familiar design

General ordering data

Version	ESG, Device markers, 6 x 17 mm, grey
Order No.	2005120000
Type	ESG 6/17 MM GR
GTIN (EAN)	4050118390742
Qty.	3,000 pc(s).
compatible printer	2599430000 2599440000

ESG 6/17 MM GR

Weidmüller Interface GmbH & Co. KG

Klingenbergstraße 26

D-32758 Detmold

Germany

www.weidmueller.com

Technical data

Dimensions and weights

Depth	0.1 mm	Depth (inches)	0.004 inch
Height	6 mm	Height (inches)	0.236 inch
Width	17 mm	Width (inches)	0.669 inch
Net weight	0.04 g		

Temperatures

Operating temperature range	-40...120 °C
-----------------------------	--------------

General data

Adhesive	Acrylate adhesive		
Approval acc. to UL 969	Yes		
Colour	grey		
Halogen	No		
Material	Polyester		
Number of markers per combination	1 Label reel = 3000 Device markers		
Number of markers per packaging unit	Number of markers per combination	3,000	
	Form of supply	Label reel	
Number per roll	3,000		
Operating temperature range	-40...120 °C		
Operating temperature range, max.	120 °C		
Operating temperature range, min.	-40 °C		
UL 94 flammability rating	V-0		
Version	Self-adhesive, halogen-free		
Width	17 mm		

Device markers

Halogen	No
---------	----

Classifications

ETIM 6.0	EC001288	ETIM 7.0	EC001288
ETIM 8.0	EC001288	ETIM 9.0	EC001288
ECLASS 9.0	27-40-06-29	ECLASS 9.1	27-40-06-29
ECLASS 10.0	27-40-06-29	ECLASS 11.0	27-28-11-04
ECLASS 12.0	27-28-11-04	ECLASS 13.0	27-28-11-04

Approvals

ROHS	Conform
------	---------

Downloads

Engineering Data	CAD data – STEP
Catalogues	Catalogues in PDF-format

ESG 6/17 MM GR

Weidmüller Interface GmbH & Co. KG

Klingenbergstraße 26

D-32758 Detmold

Germany

www.weidmueller.com

Drawings

