

BG GH 10P 4XVG PT6**Weidmüller Interface GmbH & Co. KG**

Klingenbergstraße 26

D-32758 Detmold

Germany

www.weidmueller.com

The FieldPower® housings are highly robust and meet the highest UL flammability class 5 VA.

- The "TS 35 PT6" mounting rail module and PT6 contact unit are easy to snap on.
- Hinged seals allow pre-assembled plug cables to also be used.
- The high cover versions enable the device to be installed.

For cable seals consult accessories.

General ordering data

Version	FieldPower® enclosures, 181 mm, 223 mm, 42 mm, IP65, in complete state, glass-fibre reinforced polycarbonate, black
Order No.	1121990000
Type	BG GH 10P 4XVG PT6
GTIN (EAN)	4032248903030
Qty.	10 pc(s).

BG GH 10P 4XVG PT6

Weidmüller Interface GmbH & Co. KG

Klingenbergstraße 26

D-32758 Detmold

Germany

www.weidmueller.com

Technical data

Dimensions and weights

Depth	42 mm	Depth (inches)	1.654 inch
Height	181 mm	Height (inches)	7.126 inch
Width	223 mm	Width (inches)	8.78 inch
Net weight	367 g		

Temperatures

Storage temperature	-40 °C...85 °C	Operating temperature	-20 °C...80 °C
---------------------	----------------	-----------------------	----------------

Cable gland

Cable gland clamping area, max.	12 mm	Cable gland clamping area, min.	6 mm
Cable gland material	Polyamide 6	Number of cable glands	4

General data

Material	Polycarbonate, glass fibre reinforced	Enclosure material	glass-fibre reinforced polycarbonate
Silicone	No	Colour	black
Protection degree	IP65, in complete state	UL 94 flammability rating	5VA
Type of mounting	Screw mounting, Fixing lugs	With cable gland	Yes

Classifications

ETIM 6.0	EC000261	ETIM 7.0	EC000261
ETIM 8.0	EC000261	ETIM 9.0	EC000261
ECLASS 9.0	27-18-01-01	ECLASS 9.1	27-18-92-90
ECLASS 10.0	27-18-01-01	ECLASS 11.0	27-18-01-01
ECLASS 12.0	27-18-01-01	ECLASS 13.0	27-18-01-01

Environmental Product Compliance

REACH SVHC	Potassium perfluorobutane sulfonate 29420-49-3
SCIP	210f646e-64fd-46de-9a7c-8dff222ea2cb

Approvals

Approvals



ROHS	Conform
UL File Number Search	UL Website
Certificate No. (UL)	E256877

Downloads

Approval/Certificate/Document of Conformity	UL Certificate FieldPower® size 1 and 2 (10P) lid and base variants Manufacturer's Declaration FieldPower® Enclosure parts
Engineering Data	CAD data – STEP
Catalogues	Catalogues in PDF-format

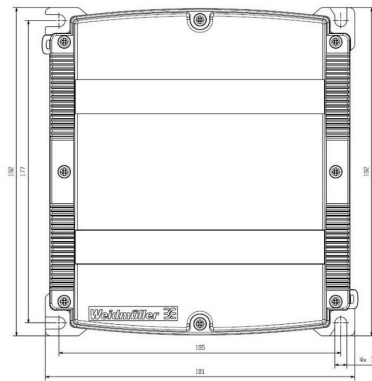
BG GH 10P 4XVG PT6

Weidmüller Interface GmbH & Co. KG
Klingenbergstraße 26
D-32758 Detmold
Germany

www.weidmueller.com

Drawings

Drilling template



BG GH 10P 4XVG PT6**Weidmüller Interface GmbH & Co. KG**

Klingenbergstraße 26

D-32758 Detmold

Germany

www.weidmueller.com**Accessories****AC**

Power distribution using uncut cables with cross-sections from 1.5 to 6 mm².

Power supply / T-branch tap via PUSH IN connection (0.5 to 10 mm²) and/or plug-in connection (0.5 to 4 mm²).

Coloured markings provide clear assignment of wires.

- Power supply
- Power distribution
- Power branching

General ordering data

Type	PT6	Version
Order No.	1957620000	FieldPower® contact element, AC, IP20, Insulation displacement
GTIN (EAN)	4032248642489	connection (IDC), PUSH IN, Number of poles : 5
Qty.	1 pc(s).	

Terminal rails for lower parts of enclosure

Extensive range of accessories for the FieldPower® boxes.

Cable seals, terminal rails, locking elements and much more.

General ordering data

Type	TS 35 PT6	Version
Order No.	1170690000	Field Power® terminal rail, Steel, galvanized, 54 mm, for base part
GTIN (EAN)	4032248962532	
Qty.	10 pc(s).	

BG GH 10P 4XVG PT6

Weidmüller Interface GmbH & Co. KG

Klingenbergstraße 26

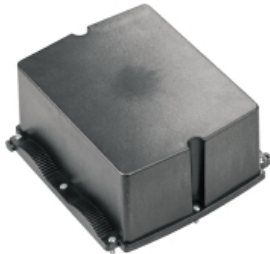
D-32758 Detmold

Germany

www.weidmueller.com

Accessories

Generation 1



The FieldPower® housings are highly robust and meet the highest UL flammability class 5 VA.

- The "TS 35 PT6" mounting rail module and PT6 contact unit are easy to snap on.
- Hinged seals allow pre-assembled plug cables to also be used.
- The high cover versions enable the device to be installed.

For cable seals consult accessories.

General ordering data

Type	BG GHDE 10P HO GK PT6	Version
Order No.	2486990000	FieldPower® enclosures, 181 mm, 192 mm, 87 mm, IP65, in
GTIN (EAN)	4050118497595	complete state, Polycarbonate, Transparent
Qty.	5 pc(s).	
Type	BG GHDE 10P PT6	Version
Order No.	1122200000	FieldPower® enclosures, 181 mm, 192 mm, 25 mm, IP65, in
GTIN (EAN)	4032248903207	complete state, glass-fibre reinforced polycarbonate, black
Qty.	10 pc(s).	
Type	BG GHDE 10P HO PT6	Version
Order No.	1121950000	FieldPower® enclosures, 181 mm, 192 mm, 87 mm, IP65, in
GTIN (EAN)	4032248903016	complete state, glass-fibre reinforced polycarbonate, black
Qty.	10 pc(s).	

Functional lid



The FieldPower® housings are highly robust and meet the highest UL flammability class 5 VA.

- The "TS 35 PT6" mounting rail module and PT6 contact unit are easy to snap on.
- Hinged seals allow pre-assembled plug cables to also be used.
- The high cover versions enable the device to be installed.

For cable seals consult accessories.

General ordering data

Type	GHDE 10P HO ON/OFF PTS4	Version
Order No.	8000005211	FieldPower® enclosures, 181 mm, 192 mm, 122 mm, IP65,
GTIN (EAN)	4050118048568	in complete state, glass-fibre reinforced polycarbonate, black,
Qty.	1 pc(s).	Maintenance switch

BG GH 10P 4XVG PT6

Weidmüller Interface GmbH & Co. KG

Klingenbergstraße 26

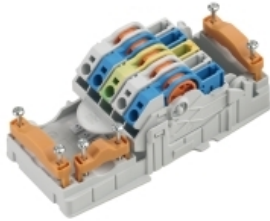
D-32758 Detmold

Germany

www.weidmueller.com

Accessories

DC



Power distribution using uncut cables with cross-sections from 1.5 to 6 mm².

Power supply / T-branch tap via PUSH IN connection (0.5 to 10 mm²) and/or plug-in connection (0.5 to 4 mm²).

Coloured markings provide clear assignment of wires.

- Power supply
- Power distribution
- Power branching

General ordering data

Type	PT6 DC	Version
Order No.	1126840000	FieldPower® contact element, DC, IP20, Insulation displacement
GTIN (EAN)	4032248908462	connection (IDC), PUSH IN, Number of poles : 5
Qty.	1 pc(s).	

Adapters



HQ adapter for FieldPower®

Tool-free installation like a FieldPower cable seal
Suitable for the HQ 4/2, HQ 8 and HQ 17 plug-in connector inserts

Optionally with lockable protective cover (protection against being switched on again, in accordance with EN 60204-1)

General ordering data

Type	BG ARGH HQP ALU PT6	Version
Order No.	1532200000	Adapter, Field Power® sealing insert, HQ adapter, IP65, with
GTIN (EAN)	4050118337433	corresponding enclosure, Polycarbonate, glass fibre reinforced,
Qty.	1 pc(s).	lockable: No
Type	BG ARGH HQP ALU PT6 CS	Version
Order No.	1532210000	Adapter, Field Power® sealing insert, HQ adapter, IP65, with
GTIN (EAN)	4050118337600	corresponding enclosure, Polycarbonate, glass fibre reinforced,
Qty.	1 pc(s).	lockable: Yes

BG GH 10P 4XVG PT6

Weidmüller Interface GmbH & Co. KG

Klingenbergstraße 26

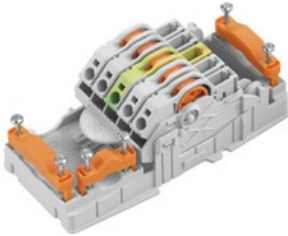
D-32758 Detmold

Germany

www.weidmueller.com

Accessories

AC/DC



Power distribution using uncut cables with cross-sections from 1.5 to 6 mm².

Power supply / T-branch tap via PUSH IN connection (0.5 to 10 mm²) and/or plug-in connection (0.5 to 4 mm²).

Coloured markings provide clear assignment of wires.

- Power supply
- Power distribution
- Power branching

General ordering data

Type	PT6 230/BUS	Version
Order No.	1269960000	FieldPower® contact element, AC, IP20, Insulation displacement
GTIN (EAN)	4050118058239	connection (IDC), PUSH IN, Number of poles : 5
Qty.	1 pc(s).	
Type	PT6 DC 1/2/PE/3/4	Version
Order No.	1534930000	FieldPower® contact element, DC, IP20, Insulation displacement
GTIN (EAN)	4050118338775	connection (IDC), PUSH IN, Number of poles : 5
Qty.	1 pc(s).	

Seals



Intelligent cabling solutions can save you valuable time and money.

The FieldPower® modular system contains the right solution for every cabling task.

Foldable seals for the use of pre-assembled cables

Seals available with M16 and M20 connection thread

Integration of operating and signalling devices into the seal possible

General ordering data

Type	DG M16 PT6	Version
Order No.	2545540000	Field Power® sealing insert, Seal with connection thread, IP65, with
GTIN (EAN)	4050118555523	corresponding enclosure, EPDM
Qty.	1 pc(s).	
Type	DG M20 PT6	Version
Order No.	2545550000	Field Power® sealing insert, Seal with connection thread, IP65, with
GTIN (EAN)	4050118555530	corresponding enclosure, EPDM
Qty.	1 pc(s).	
Type	RKDG D9 PT6	Version
Order No.	4329610000	Field Power® sealing insert, Foldable seal, IP65 with corresponding
GTIN (EAN)	4032248668687	housing, IP65, with corresponding enclosure, EPDM, 7 mm ² , 9 mm ²
Qty.	10 pc(s).	
Type	RKDG D15 PT6	Version
Order No.	4323220000	Field Power® sealing insert, Foldable seal, IP65 with corresponding
GTIN (EAN)	4032248641222	housing, IP65, with corresponding enclosure, EPDM, 13 mm ² , 15 mm ²
Qty.	10 pc(s).	

BG GH 10P 4XVG PT6

Weidmüller Interface GmbH & Co. KG

Klingenbergstraße 26

D-32758 Detmold

Germany

www.weidmueller.com

Accessories

Type	RKDGE D2X6,5 PT6	Version
Order No.	2443800000	Field Power® sealing insert, Slotted sealing insert, IP54, in
GTIN (EAN)	4050118457704	combination with RKDG D17 PT6, with corresponding enclosure, TPE-
Qty.	10 pc(s).	V, 6.5 mm ²
Type	RKDG D11 PT6	Version
Order No.	4323210000	Field Power® sealing insert, Foldable seal, IP65 with corresponding
GTIN (EAN)	4032248641215	housing, IP65, with corresponding enclosure, EPDM, 9 mm ² , 11 mm ²
Qty.	10 pc(s).	
Type	DG D0 PT6	Version
Order No.	4323240000	Field Power® sealing insert, Blank seal, IP65, with corresponding
GTIN (EAN)	4032248641246	enclosure, EPDM
Qty.	10 pc(s).	
Type	RKDG D17 PT6	Version
Order No.	4324010000	Field Power® sealing insert, Foldable seal, IP65 with corresponding
GTIN (EAN)	4032248641284	housing, IP65, with corresponding enclosure, EPDM, 15 mm ² , 17 mm ²
Qty.	10 pc(s).	
Type	RKDG D18 WG PT6	Version
Order No.	2491870000	Field Power® sealing insert, Seal, IP54, with corresponding enclosure,
GTIN (EAN)	4050118501537	EPDM, 18.5 mm ² , 20.5 mm ²
Qty.	10 pc(s).	
Type	RKDGE D4X4 PT6	Version
Order No.	2443760000	Field Power® sealing insert, Slotted sealing insert, IP54, in
GTIN (EAN)	4050118457643	combination with RKDG D17 PT6, with corresponding enclosure, TPE-
Qty.	10 pc(s).	V, 4 mm ²
Type	RKDG D24 WG PT6	Version
Order No.	1069060000	Field Power® sealing insert, Seal, IP54, with corresponding enclosure,
GTIN (EAN)	4032248827053	EPDM
Qty.	10 pc(s).	
Type	RKDG D13 PT6	Version
Order No.	4323230000	Field Power® sealing insert, Foldable seal, IP65 with corresponding
GTIN (EAN)	4032248641239	housing, IP65, with corresponding enclosure, EPDM, 11 mm ² , 13 mm ²
Qty.	10 pc(s).	
Type	RKDG 2XD8.5 WG PT6	Version
Order No.	1114530000	Field Power® sealing insert, Seal, IP54, with corresponding enclosure,
GTIN (EAN)	4032248892624	EPDM, 8.5 mm ² , 10.5 mm ²
Qty.	10 pc(s).	