

BG GHDE 10P HO PT6**Weidmüller Interface GmbH & Co. KG**

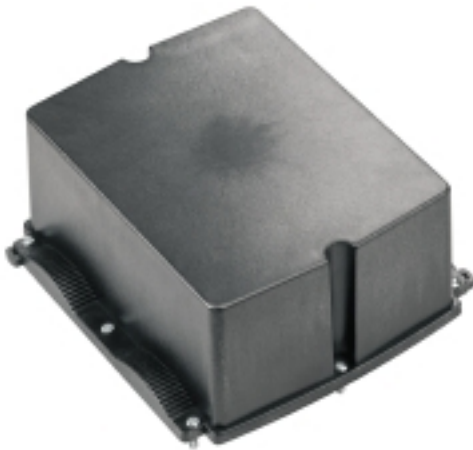
Klingenbergstraße 26

D-32758 Detmold

Germany

www.weidmueller.com

Do not use product for new
developments



The FieldPower® housings are highly robust and meet the highest UL flammability class 5 VA.

- The "TS 35 PT6" mounting rail module and PT6 contact unit are easy to snap on.
- Hinged seals allow pre-assembled plug cables to also be used.
- The high cover versions enable the device to be installed.

For cable seals consult accessories.

General ordering data

| | |
|------------|---|
| Version | FieldPower® enclosures, 181 mm, 192 mm, 87 mm, IP65, in complete state, glass-fibre reinforced polycarbonate, black |
| Order No. | 1121950000 |
| Type | BG GHDE 10P HO PT6 |
| GTIN (EAN) | 4032248903016 |
| Qty. | 10 pc(s). |

BG GHDE 10P HO PT6

Weidmüller Interface GmbH & Co. KG

Klingenbergstraße 26

D-32758 Detmold

Germany

www.weidmueller.com

Technical data

Dimensions and weights

| | | | |
|------------|----------|-----------------|------------|
| Depth | 87 mm | Depth (inches) | 3.425 inch |
| Height | 181 mm | Height (inches) | 7.126 inch |
| Width | 192 mm | Width (inches) | 7.559 inch |
| Net weight | 394.77 g | | |

Temperatures

| | | | |
|---------------------|----------------|-----------------------|----------------|
| Storage temperature | -40 °C...85 °C | Operating temperature | -40 °C...85 °C |
|---------------------|----------------|-----------------------|----------------|

General data

| | | | |
|-----------------------|---------------------------------------|---------------------------|--------------------------------------|
| Material | Polycarbonate, glass fibre reinforced | Enclosure material | glass-fibre reinforced polycarbonate |
| Silicone | No | Colour | black |
| Protection degree | IP65, in complete state | UL 94 flammability rating | 5VA |
| Torque for lid screws | 2 Nm | Lid attachment | TX20 screws |
| Installation advice | Lid screws included | | |

Classifications

| | | | |
|-------------|-------------|-------------|-------------|
| ETIM 6.0 | EC000261 | ETIM 7.0 | EC000261 |
| ETIM 8.0 | EC000261 | ETIM 9.0 | EC000261 |
| ECLASS 9.0 | 27-18-01-01 | ECLASS 9.1 | 27-18-92-90 |
| ECLASS 10.0 | 27-18-01-01 | ECLASS 11.0 | 27-18-01-01 |
| ECLASS 12.0 | 27-18-01-01 | ECLASS 13.0 | 27-18-01-01 |

Environmental Product Compliance

| | |
|------------|--|
| REACH SVHC | Potassium perfluorobutane sulfonate 29420-49-3 |
| SCIP | 210f646e-64fd-46de-9a7c-8dff222ea2cb |

Approvals

Approvals



| | |
|-----------------------|------------|
| ROHS | Conform |
| UL File Number Search | UL Website |
| Certificate No. (UL) | E256877 |

Downloads

| | |
|---|---|
| Approval/Certificate/Document of Conformity | UL Certificate FieldPower® size 1 and 2 (10P) lid and base variants Manufacturer's Declaration FieldPower® Enclosure parts |
| Engineering Data | CAD data – STEP |
| Product Change Notification | Technical change to FieldPower® (GHDE) |
| Catalogues | Catalogues in PDF-format |

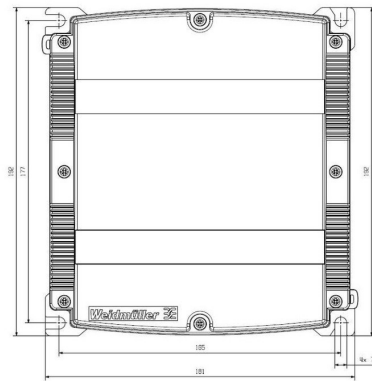
BG GHDE 10P HO PT6

Weidmüller Interface GmbH & Co. KG
Klingenbergstraße 26
D-32758 Detmold
Germany

www.weidmueller.com

Drawings

Drilling template



BG GHDE 10P HO PT6

Weidmüller Interface GmbH & Co. KG

Klingenbergstraße 26

D-32758 Detmold

Germany

www.weidmueller.com

Accessories

DMS PRO



Weidmüller torque screwdrivers have an ergonomic design and are therefore ideal for use with one hand. They can be used without causing fatigue in all installation positions. Apart from that, they incorporate an automatic torque limiter and have a good reproducibility accuracy.

General ordering data

| | | |
|------------|----------------------------|---------------|
| Type | DMS PRO | Version |
| Order No. | 1479120000 | Mounting tool |
| GTIN (EAN) | 4050118287011 | |
| Qty. | 1 pc(s). | |

Generation 1



The FieldPower® housings are highly robust and meet the highest UL flammability class 5 VA.

- The "TS 35 PT6" mounting rail module and PT6 contact unit are easy to snap on.
- Hinged seals allow pre-assembled plug cables to also be used.
- The high cover versions enable the device to be installed.

For cable seals consult accessories.

General ordering data

| | | |
|------------|----------------------------|---|
| Type | BG GH 10P 4XVG PT6 | Version |
| Order No. | 1121990000 | FieldPower® enclosures, 181 mm, 223 mm, 42 mm, IP65, in complete state, glass-fibre reinforced polycarbonate, black |
| GTIN (EAN) | 4032248903030 | |
| Qty. | 10 pc(s). | |
| Type | GH 10P PT6 | Version |
| Order No. | 1121980000 | FieldPower® enclosures, 181 mm, 192 mm, 42 mm, IP65, in complete state, glass-fibre reinforced polycarbonate, black |
| GTIN (EAN) | 4032248903023 | |
| Qty. | 10 pc(s). | |

BG GHDE 10P HO PT6**Weidmüller Interface GmbH & Co. KG**

Klingenbergstraße 26

D-32758 Detmold

Germany

www.weidmueller.com**Accessories****Bits E6,3 - Torx®**

The Weidmüller bits are standard bits which are highly popular with users thanks to their good quality, large range and efficiency. The computer-controlled hardening method enables Weidmüller to guarantee a consistently high standard of quality.

The high-quality raw materials used make it possible to reach torques far higher than any of those specified in the relevant DIN standards:

- DIN 5261 for PH/PZ bits,
- DIN 5263 for slotted bits,
- Camcar standard for TORX bits

That means a long life at high torques and hence ideal conditions for standard situations.

The benefits:

- Suitable for all types of screws. Because of their excellent hardness values of 59-61 HRC, they are suitable for use with both manual and power tools.
- Good wearing resistance and thus a long life expectancy.
- Optimum fit in all DIN screws means low wear and optimum torque transmission.
- Manufactured to meet professional quality criteria according to relevant ISO standards with a consistently high standard of quality.

General ordering data

| | | |
|------------|----------------------------|---------------|
| Type | BIT E6,3 T20 X 150 | Version |
| Order No. | 2821510000 | Mounting tool |
| GTIN (EAN) | 4064675359050 | |
| Qty. | 50 pc(s). | |