

KLIPPON K2

Weidmüller Interface GmbH & Co. KG

Klingenbergstraße 26

D-32758 Detmold

Germany

www.weidmueller.com

Similar to illustration



The aluminium Klippon® K enclosures are suitable for use in an extremely wide range of different areas. Various components can be installed inside the enclosures, and will benefit in particular from the high temperature resistance, the excellent IP protection and the good impact resistance.

No matter what kind of application the customer is planning, Weidmüller is able to provide a wide range of aluminium enclosures precisely fitting the customer's requirements.

Klippon® K enclosures for hazardous areas are available on request.

Our extensive product range offers the following advantages:

- Available in two surface finishes: natural and powder-coated (RAL 7001)
- With chloroprene moulded seal as standard (silicone moulded seal optionally available)
- Standardised closure system with Torx slotted screw head for 19 enclosure sizes
- Mounting holes outside of the gasket area
- High IP protection classes: IP66, IP67 and IP68 according to DIN EN 60529
- Impact resistance of up to 7 (10) Joules
- The enclosures are approved according ATEX, IECEx, cULus, and DNV GL as well as the empty enclosure standard.

- Suitable for railway applications according to EN 45545-2:2013
- Alloy is resistant to salt water
- Standardised distributor enclosures with threaded holes and a variety of terminal configurations

General ordering data

Version	Klippon K (aluminium empty enclosure), Empty enclosure, Aluminium enclosure, Height: 70 mm, Width: 100 mm, Depth: 45 mm, Material: Aluminium AISi12, untreated, silver
Order No.	0342100000
Type	KLIPPON K2
GTIN (EAN)	4008190104641
Qty.	10 pc(s).
Unassembled to fit rail	1910010000

KLIPPON K2

Weidmüller Interface GmbH & Co. KG

Klingenbergstraße 26

D-32758 Detmold

Germany

www.weidmueller.com

Technical data

Dimensions and weights

Depth	45 mm	Depth (inches)	1.772 inch
Height	70 mm	Height (inches)	2.756 inch
Width	100 mm	Width (inches)	3.937 inch
Mounting dimension - height	42 mm	Mounting dimension - width	88 mm
Net weight	310.2 g		

Temperatures

Operating temperature	-40 °C...80 °C
-----------------------	----------------

Cable glands, left

M12	1	M16	1
-----	---	-----	---

Cable glands, right

M12	1	M16	1
-----	---	-----	---

Cable glands, top/bottom

M12	3	M16	3
M20	2		

Certificate numbers enclosure

Approval conditions	cULus, RMRS, DNV	Certificate No. (DNV)	TAE00002SM
Certificate no. (cULus)	E197061	Declaration of Conformity No. (DoC LVD)	DE_PS2410_160412_001ISS01

General information

Access opening: height	63 mm	Access opening: width	93 mm
Areas of use	Process industry, Transportation, Marine engineering, Packaging industry, Harbour facilities, Machine construction	Enclosure attachment	
Flange plate	No		Holes 4 mm
Integral fixing	Threaded holes M4	Impact resistance	10 J version standard
Lid attachment	M4 torx stainless steel screws with slot	Lid	Yes
Material thickness of cover	3 mm	Material	Aluminium AlSi12
Max. payload	0.7 kg	Material thickness of enclosure	3.5 mm
Number of lid screws	4	Note: protection class	IP68 (t=72h, h=1m)
Operating temperature, min.	-40 °C	Operating temperature, max.	80 °C
Protection degree	IP66, IP67, IP68	Protection class (UL)	Type 4, Type 4X
Standards	EN 45545-2:2013	Seal material	Chloroprene
Torque for lid screws	2.5 Nm	Surface finish	untreated

horizontal assembly

WDU 2,5 / ZDU 2,5 / IDU 2,5	1x10
-----------------------------	------

KLIPPON K2

Weidmüller Interface GmbH & Co. KG

Klingenbergstraße 26

D-32758 Detmold

Germany

www.weidmueller.com

Technical data

vertical assembly

WDU 2,5 / ZDU 2,5 / IDU 2,5

*

WDU 4 / ZDU 4

*

Classifications

ETIM 6.0	EC000261	ETIM 7.0	EC000261
ETIM 8.0	EC000261	ETIM 9.0	EC000261
ECLASS 9.0	27-18-01-01	ECLASS 9.1	27-18-92-90
ECLASS 10.0	27-18-01-01	ECLASS 11.0	27-18-01-01
ECLASS 12.0	27-18-01-01	ECLASS 13.0	27-18-01-01

Environmental Product Compliance

REACH SVHC

Lead 7439-92-1

SCIP

9e4cab4e-239c-4e14-b9df-a0fee300d28a

Approvals

Approvals



ROHS	Conform
UL File Number Search	UL Website
Certificate no. (cULus)	E197061

Downloads

Approval/Certificate/Document of Conformity	TAE00002SM EU Declaration of Conformity - Klippon K Empty Enclosures - DoC DE PS2410 160412 001ISS02 DoM Klippon K salt water resistance DoM Klippon K EN 45545-2 2013 Railway
Engineering Data	CAD data – STEP
Product Change Notification	20240315-PCN-Klippon K Enclosure Instruction
Tender specification	Klippon K2_0342100000_DE Klippon K2_0342100000_EN
User Documentation	Assembly guidelines - empty enclosures
Catalogues	Catalogues in PDF-format
Brochures	MB KLIPPON ENCL.TECN EN FL RAILWAY 2014 EN FL RAILWAY 2014 EN

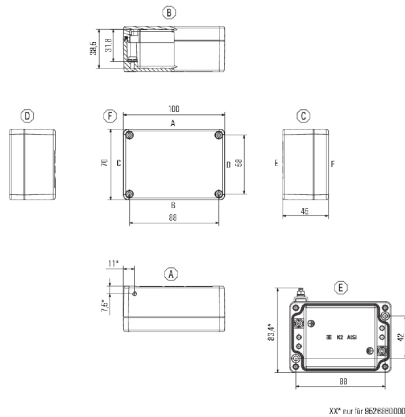
KLIPPON K2

Weidmüller Interface GmbH & Co. KG
Klingenbergstraße 26
D-32758 Detmold
Germany

www.weidmueller.com

Drawings

Dimensioned drawing



KLIPPON K2**Weidmüller Interface GmbH & Co. KG**

Klingenbergstraße 26

D-32758 Detmold

Germany

www.weidmueller.com**Accessories****Klippon® K - Mounting plates**

The system accessories for the Klippon® K enclosure series allows you to easily adapt the enclosures to meet the specific requirements of every application.

- DIN Rails TS 35 and TS 15
- Mounting plates
- Hinges
- Wall-mounted holder

General ordering data

Type	MOPL K2 N FE	Version
Order No.	1905270000	Klippon K (aluminium empty enclosure), Mounting plate, Mounting
GTIN (EAN)	4032248524433	plate, Height: 52 mm, Width: 91 mm, Depth: 3 mm, Material: Sheet
Qty.	1 pc(s).	steel, galvanized, galvanized, silver

Screws

Depending on the terminal block or also accessories, we offer different types of screws as additional items or also spare parts.

General ordering data

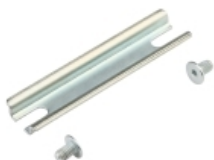
Type	FKSC M4X6 D8/SW2	Version
Order No.	1567480000	SAK Series, Allen hex screw, Screws, Number of poles: 1
GTIN (EAN)	4008190033491	
Qty.	100 pc(s).	

KLIPPON K2**Weidmüller Interface GmbH & Co. KG**

Klingenbergstraße 26

D-32758 Detmold

Germany

www.weidmueller.com**Accessories****TS 15**

The system accessories for the Klippon® K enclosure series allows you to easily adapt the enclosures to meet the specific requirements of every application.

- DIN Rails TS 35 and TS 15
- Mounting plates
- Hinges
- Wall-mounted holder

General ordering data

Type	TS15X5 ST K2	Version
Order No.	8000003884	Rail, TS 15, Width: 90 mm, without slot, Steel, galvanic zinc plated
GTIN (EAN)	4050118652505	and passivated
Qty.	20 pc(s).	
Type	TS15 90 KLIPPON K2 CSS	Version
Order No.	1910010000	Rail, TS 15, Width: 90 mm, without slot, Steel, galvanized, chromium-
GTIN (EAN)	4032248536924	plated
Qty.	1 pc(s).	