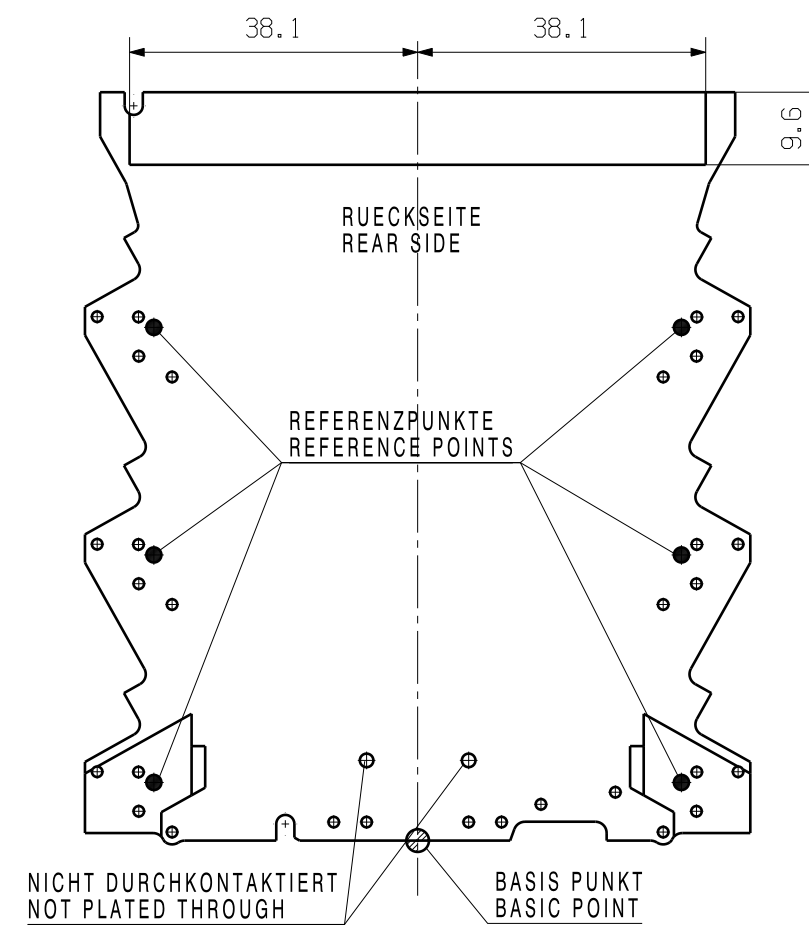
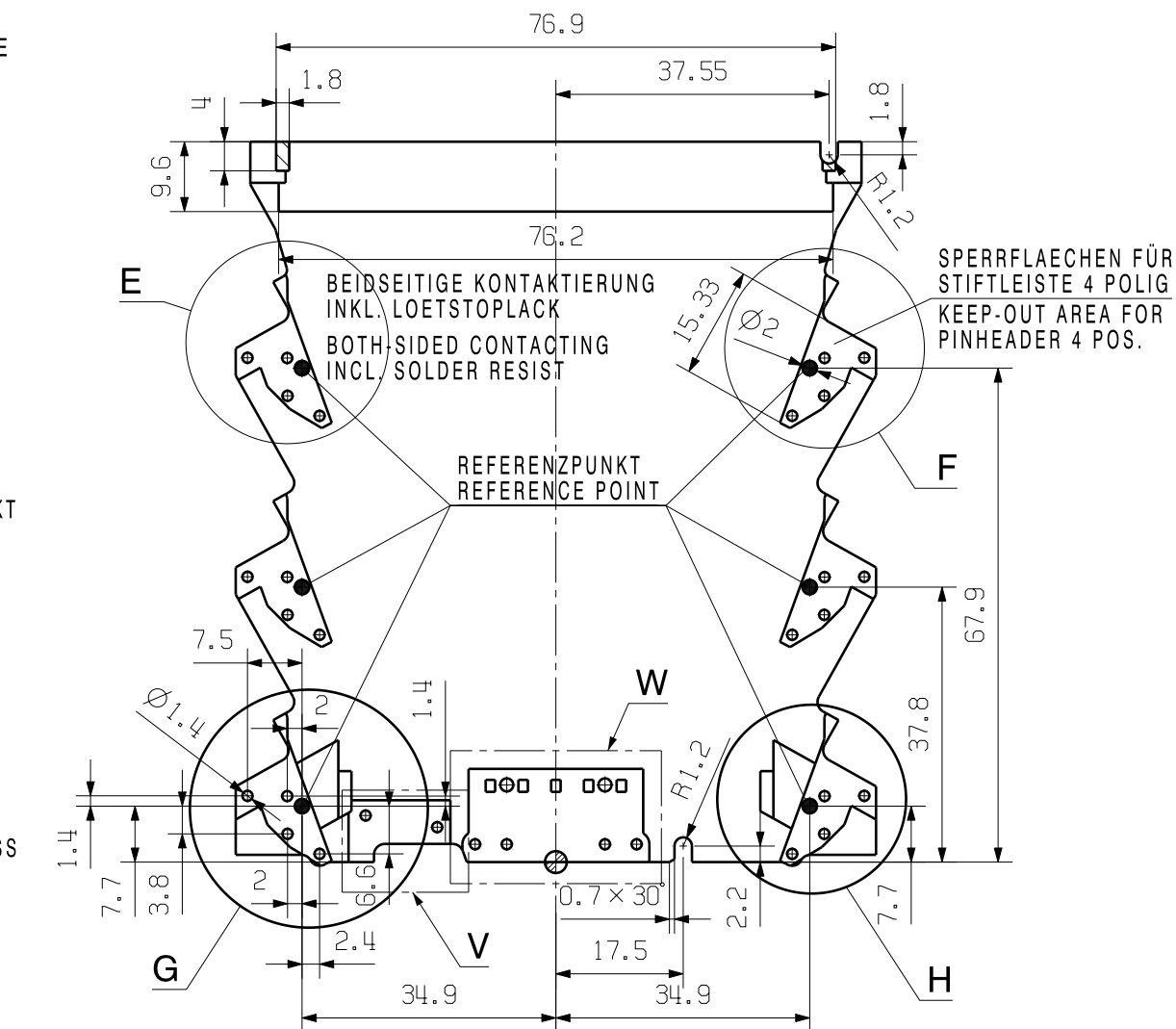


A schematic diagram of a 4-cylinder engine. It shows a cross-section of the engine block with four cylinders. A timing belt is located at the bottom, connected to the crankshaft. Above the cylinders, there are camshafts. The diagram illustrates the mechanical layout of the engine.



Technical drawing of a mechanical part with dimensions and a section line. The drawing shows a profile with various dimensions and a section line labeled F 2/1.

Dimensions (mm):

- Horizontal dimensions: 9.11, 3.96, 2.25, 2.02, 0.07, 2.72, 9.24, 12.21, 12.89, 5.63, 1.67, 4.76, 5.71, 8.76.
- Vertical dimensions: 8.24, 7.52, 1.02, 1.64, 2.54.

Section line: F 2/1

Feature: PUNKT E POINT

[illegible]

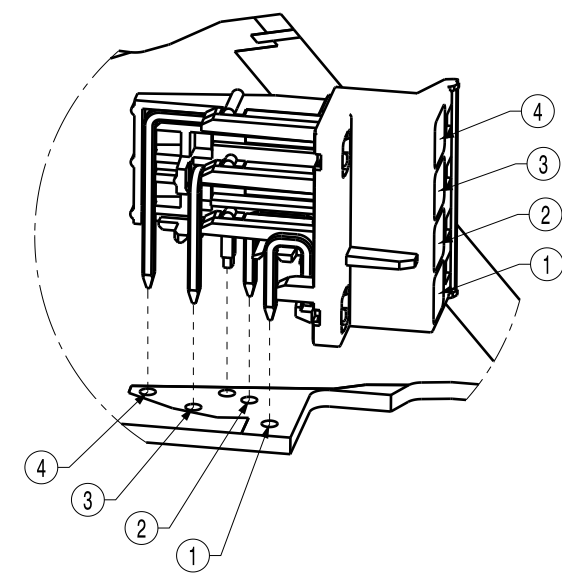
SEITENANSICHT MIT
SIDE VIEW WITH
SHL-SMT 5.00/4GL

1.6 PCB

5

1.5

STIFTLÄNGE
PINHEADER LENGTH



Technical drawing of a rectangular table. The overall width is 24 and the overall height is 12.81. The table has a top rail with six square symbols, some containing a circle with a dot. The bottom rail has two circular symbols, each containing a circle with a dot. The distance between these two symbols is 13.5.

Technical drawing of the front view of a rectangular plate. The overall width is 25.7 and the overall height is 12.81. The inner rectangular area has a width of 22.2. There are four circular features: two on the top edge and two on the bottom edge. The top edge features are spaced 12.5 apart, and the bottom edge features are spaced 12.5 apart. The distance from the left edge to the first bottom feature is 5.0, and from the right edge to the last bottom feature is 5.0. A fillet with a radius of R1.7 is shown at the bottom right corner.

UNBEMASSTE RADII R=1.5
UNDIMENSIONED RADIUS
FEHLENDE MASSE SIEHE BLATTNUMMER 02_ESD-BEREICHE
MISSING DIMENSION SEE SHEET NUMBER

MATERIAL:		PART NO.:		MAT.NO.:		CAT.NO.:	
		FINISH TO WN 211001 -					
		FINISH:		SURFACE AREA: . mm ²			
		GENERAL TOLERANCES:		TOLERANCES TO ISO 8015			
		WN 212010		X ISO 2768-f			
72825/5 16.10.13		01		Weidmüller		C 48761	
MODIFICATION				DRAWING NO.		ISSUE NO.	
				SHEET 00		OF 05 SHEETS	
		DATE		NAME		LP CH20M 5.0 SPERRFLÄCHEN KEEP OUT AREAS	
DRAWN		13.10.2009		VAN_GIESEN, B			
RESPONSIBLE				VAN_GIESEN, B			
CHECKED		25.10.2013		HECKERT, M			
SCALE: 1/1		APPROVED		HANKE, D		PRODUCT FILE: CH20M...	
SUPERSEDES:						5670	